



MLS 6722978 Residential

**\$442,500**

1,091 sq ft  
2 bedrooms  
2 baths

17377 Paradise Shores Road  
Brainerd MN 56401

Status: Active

#### Description:

Welcome to a beautifully crafted, fully furnished log cabin just steps from Upper South Long Lake. Built in 2016, this authentic cabin blends timeless "Up North" charm with modern comfort, offering the perfect year-round retreat.

Located just two hours from the Twin Cities, this 2-bedroom, 2-bath home was thoughtfully designed for both relaxation and functionality. Inside, you'll find quality finishes, including a granite kitchen island, in-floor radiant heat, air conditioning, and a cozy, inviting atmosphere that captures the essence of Minnesota lake living.

Step outside to enjoy an exceptional outdoor living area, complete with a hot tub, outdoor dining space, and a patio perfect for entertaining or simply unwinding beneath the pines. The private backyard provides plenty of room for family fun, quiet evenings, and making memories that last a lifetime. Whether you're seeking a peaceful full-time residence or a move-in-ready lake getaway. This cabin comes fully furnished and turnkey, making your transition to lake life effortless.

#### Additional Details:

Year Built	2016
Lot Acres	0.46
Lot Dimensions	100x200
School District	181
Taxes	\$1,640
Taxes with Assessments	\$1,640
Tax Year	2024

#### Additional Features:

**Basement:** None **Fuel:** Propane **Heat:** Radiant Floor **Sewer:** Mound Septic, Private Sewer **Water:** Drilled, Private **Air Conditioning:** Wall Unit(s)

#### Driving Directions:

From Leisure Ln you go left onto Paradise Shores Rd. The cabin is on the right several places past the resort.



Listed By:  
MN Real Estate and Management LLC

Affinity Real Estate Inc. participates in the Regional Multiple Listing Service of Minnesota, Inc Broker Reciprocity (sm) program, allowing us to display other broker's listings on our website. All properties are subject to prior sale, change or withdrawal.



Call Affinity Real Estate

**218-237-3333**

[info@affinityrealestate.com](mailto:info@affinityrealestate.com)



Affinity Real Estate - 600 Park Avenue South - Park Rapids MN 56470





website: [www.AffinityRealEstate.com](http://www.AffinityRealEstate.com) | email: [info@affinityrealestate.com](mailto:info@affinityrealestate.com) | office: 218-237-3333 | fax: 218-237-3377

**Affinity**  
REAL ESTATE INC

**\$442,500**  
MLS 6722978 Residential  
17377 Paradise Shores  
Road  
Brainerd MN 56401





website: [www.AffinityRealEstate.com](http://www.AffinityRealEstate.com) | email: [info@affinityrealestate.com](mailto:info@affinityrealestate.com) | office: 218-237-3333 | fax: 218-237-3377

**Affinity**  
REAL ESTATE INC

**\$442,500**  
MLS 6722978 Residential  
17377 Paradise Shores  
Road  
Brainerd MN 56401





website: [www.AffinityRealEstate.com](http://www.AffinityRealEstate.com) | email: [info@affinityrealestate.com](mailto:info@affinityrealestate.com) | office: 218-237-3333 | fax: 218-237-3377

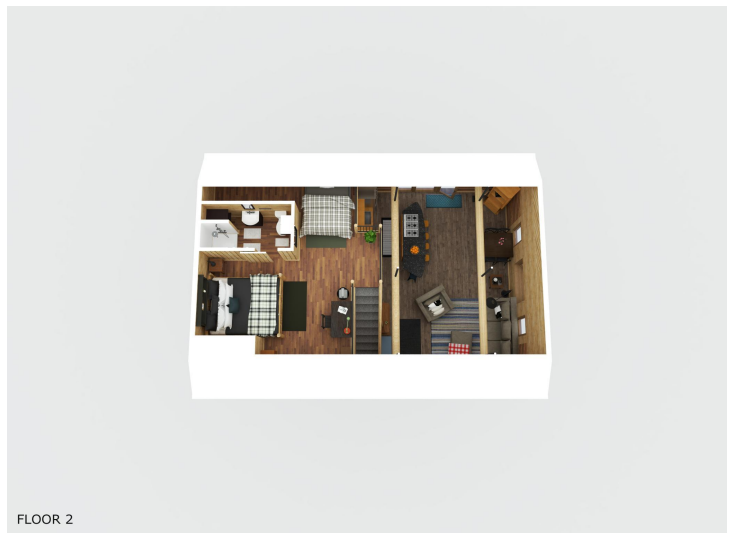
**Affinity**  
REAL ESTATE INC

**\$442,500**  
MLS 6722978 Residential  
17377 Paradise Shores  
Road  
Brainerd MN 56401



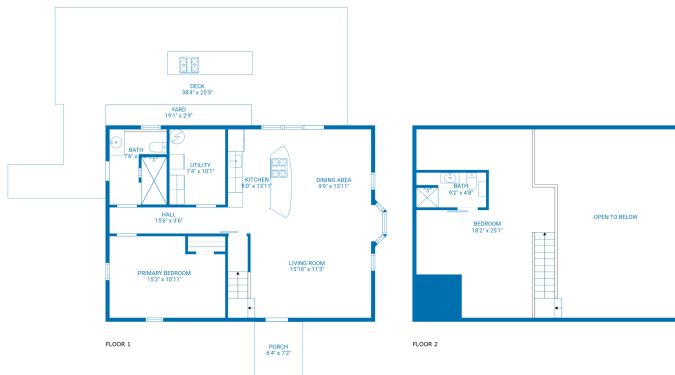


FLOOR 1



FLOOR 2

ATTIC  
NORTHWEST & NORTHEAST



FLOOR 1

FLOOR 2

TOTAL: 1091 sq. ft.  
BELOW GROUND: 839 sq. ft. FLOOR 2: 252 sq. ft.  
EXCLUDED AREAS: UNFINISHED: 23 sq. ft. DECK: 833 sq. ft. PORCH: 45 sq. ft.  
YARD: 53 sq. ft. BAY WINDOW: 7 sq. ft. OPEN TO BELOW: 420 sq. ft.  
LOW CEILING: 190 sq. ft.  
FLOOR PLAN CREATED BY CIRCULAR ANY MEASUREMENTS SHOWN HIGHLY RELIABLE BUT NOT GUARANTEED.



website: [www.AffinityRealEstate.com](http://www.AffinityRealEstate.com) | email: [info@affinityrealestate.com](mailto:info@affinityrealestate.com) | office: 218-237-3333 | fax: 218-237-3377

**Affinity**  
REAL ESTATE INC

**\$442,500**  
MLS 6722978 Residential  
17377 Paradise Shores  
Road  
Brainerd MN 56401





website: [www.AffinityRealEstate.com](http://www.AffinityRealEstate.com) | email: [info@affinityrealestate.com](mailto:info@affinityrealestate.com) | office: 218-237-3333 | fax: 218-237-3377

**Affinity**  
REAL ESTATE INC

**\$442,500**  
MLS 6722978 Residential  
17377 Paradise Shores  
Road  
Brainerd MN 56401



website: [www.AffinityRealEstate.com](http://www.AffinityRealEstate.com) | email: [info@affinityrealestate.com](mailto:info@affinityrealestate.com) | office: 218-237-3333 | fax: 218-237-3377



**\$442,500**

MLS 6722978 Residential  
17377 Paradise Shores  
Road  
Brainerd MN 56401