



MLS 6723120 Residential

\$225,000

1,104 sq ft
3 bedrooms
1 baths

1813 Pine Street
Brainerd MN 56401

Status: Pending

Description:

Welcome to 1813 Pine Street in Brainerd, MN! This home was recently built in 2022 and is ready for its next owner. Fully wheelchair accessible with no stairs inside or outside, roll under sink and cooktop, roll-in shower and bathroom grab bars. All living facilities on one level for easy use and access to everything. With in-floor heat throughout for the cold months and a mini-split for the warmer months. Backyard is partially fenced in and backs up to an alley. Schedule a showing today!

Additional Details:

Year Built	2022
Lot Acres	0.18
Lot Dimensions	56x140
Garage Stalls	1
School District	181
Taxes	\$2,444
Taxes with Assessments	\$2,444
Tax Year	2025

Additional Features:

Basement: None **Fuel:** Natural Gas **Garage:** 1 **Heat:** Ductless Mini-Split, Radiant Floor **Sewer:** City Sewer/Connected **Water:** City Water/Connected **Air Conditioning:** Ductless Mini-Split

Driving Directions:

210 to 13th Ave. East on Pine Street. Property on the left.



Listed By:
Edina Realty, Inc.

Affinity Real Estate Inc. participates in the Regional Multiple Listing Service of Minnesota, Inc Broker Reciprocity (sm) program, allowing us to display other broker's listings on our website. All properties are subject to prior sale, change or withdrawal.



Call Affinity Real Estate

218-237-3333

info@affinityrealestate.com



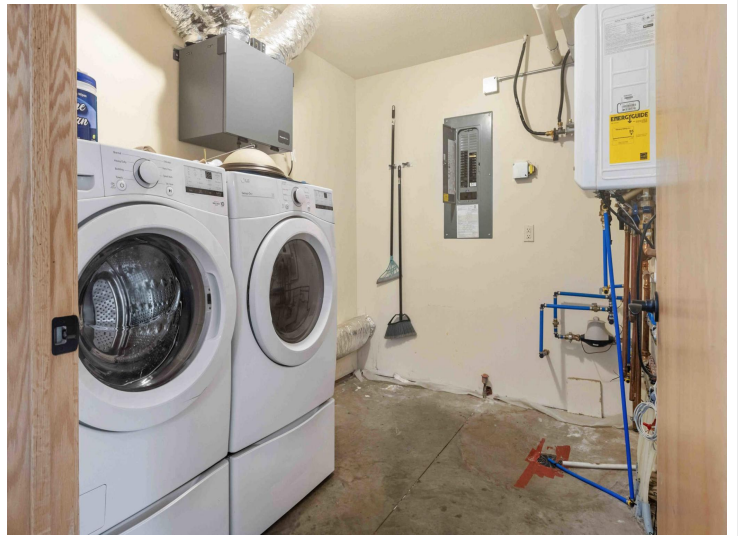
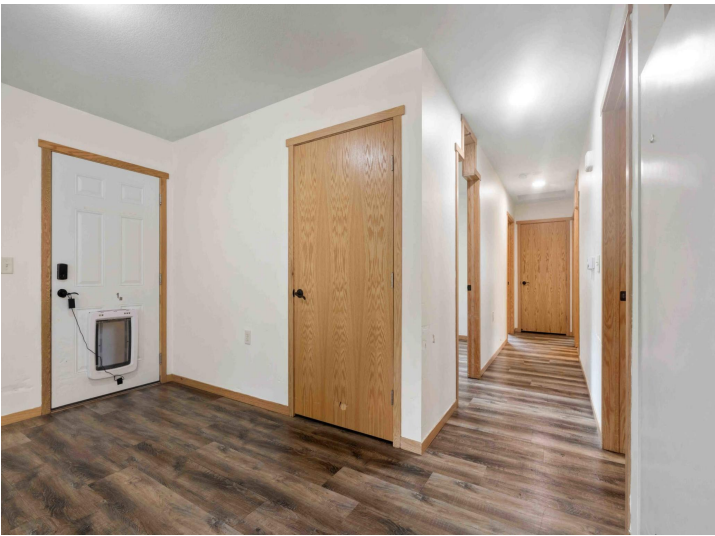
Affinity Real Estate - 600 Park Avenue South - Park Rapids MN 56470



website: www.AffinityRealEstate.com | email: info@affinityrealestate.com | office: 218-237-3333 | fax: 218-237-3377



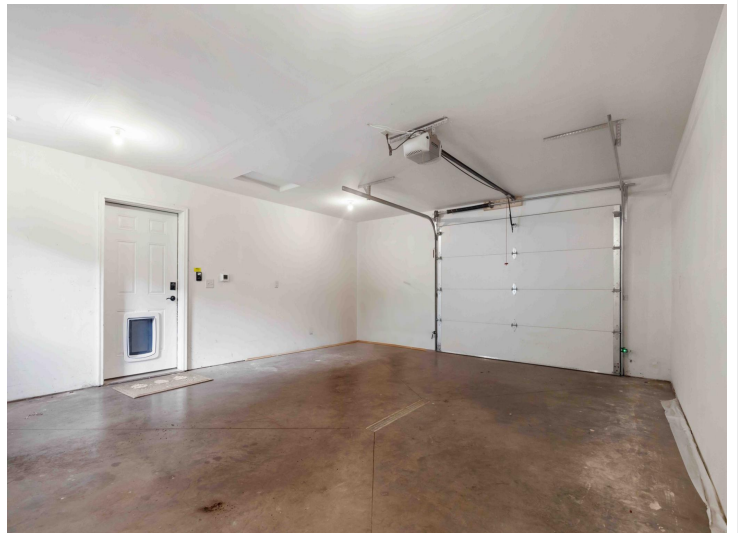
\$225,000
MLS 6723120 Residential
1813 Pine Street
Brainerd MN 56401



website: www.AffinityRealEstate.com | email: info@affinityrealestate.com | office: 218-237-3333 | fax: 218-237-3377



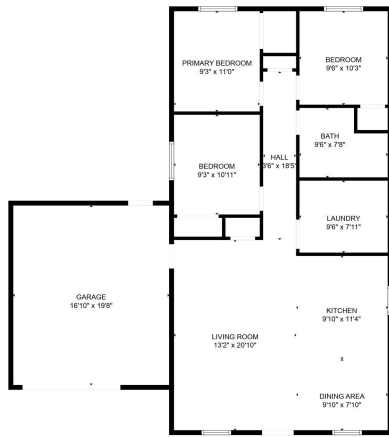
\$225,000
MLS 6723120 Residential
1813 Pine Street
Brainerd MN 56401



website: www.AffinityRealEstate.com | email: info@affinityrealestate.com | office: 218-237-3333 | fax: 218-237-3377



\$225,000
 MLS 6723120 Residential
 1813 Pine Street
 Brainerd MN 56401



ESTIMATED AREAS
 GLA FLOOR 1: 1049 sq. ft. EXCLUDED AREAS 437 sq. ft.
 TOTAL GLA 1486 sq. ft. TOTAL AREA 2465 sq. ft.
 FLOOR PLAN CREATED BY CIRCLEK AND PHOTOGRAPHY COURTESY HOMES BY DESIGN BUT NOT GUARANTEED.

website: www.AffinityRealEstate.com | email: info@affinityrealestate.com | office: 218-237-3333 | fax: 218-237-3377



\$225,000
 MLS 6723120 Residential
 1813 Pine Street
 Brainerd MN 56401