



MLS 6723444 Lake Home

**\$435,000**

990 sq ft  
2 bedrooms  
1 baths

1325 Wabedo Pass Road  
Longville MN 56655

Waterfront: Wabedo

Status: Active

#### Description:

"Wabedo Lake Masterpiece:" created by the current Owners of over 20 years. During the reconstruction in 2008, the newspapers removed from the walls were from 1913..!

What is seen here today, on this beautiful Lakeshore Tract, is the culmination of 2 Artists, with a vision to bring the best from an earlier period forward and create simply one of the most alluring, quintessential properties, I have ever seen, in my 40 year Real Estate Career.

A Fieldstone foundation wraps around the front of the cottage, with the stone steps leading you into the 4 season porch where you will be drawn in over the 100 year old reclaimed Douglas Fir, with square nails, that further extends into the Kitchen, Dining, Living and Bedroom Areas which is accented by the Fieldstone wood burning Fireplace. The vaulted ceiling is paneled with reclaimed old growth 100 year old Douglas Fir from a railroad Trestle over the Great Salt Lake in Utah. Kitchen features: a vintage rounded top Frigidaire Refrigerator, white porcelain Farm sink, Jurra green Limestone counter tops from Germany, a refurbished 1940's rounded top Frigidaire Refrigerator, a vintage white porcelain Farm Sink, the Miele gas cook top, microwave and a Kitchen Aid Oven, all fit perfectly into the decor. The Lakeside Bedroom features those same Doug Fir floors plus reclaimed Knotty Pine Paneling from a Granary in Duluth. The full bath features real rock flooring, a vintage Claw foot Cast Iron Soaker tub and those same Jurra Limestone counter tops. A spacious 12x22 vaulted loft, or Dorm Room upstairs, features Knotty Pine Ceilings, Pine Floors, Log Purlins, and is currently used as the main Bedroom/Sitting area, but would suit well as a dorm room for kids or guests. Adding a bunk bed there would allow the place to sleep at least 8 or 9 comfortably. Outdoors: "Park Like" grounds with natural Perennial Flower Gardens surrounding the Cottage, (The Butterfly's, Bee's and Hummingbird's have gotta just love this place!) The Original Boat House is 10x20, has a Beer/Pop/Bait Fridge plus ample storage for just about any Fishing or Recreational water activity equipment. Swing the double doors open, set a chair down and you won't feel like ever leaving. 75 feet of wonderful hard sandy swimming awaits all the kids. The original Model "T" Garage is 10x18, has a work bench and adequately serves as the yard tools or equipment storage. Simply put, a Timeless Lake Cottage like none other.

#### Additional Details:

Year Built	1913
Lot Acres	0.41
Lot Dimensions	75x272x74x254
Garage Stalls	1

School District	118
-----------------	-----



Listed By:  
Moran Realty

Taxes with Assessments \$1,468

Affinity Real Estate Inc. participates in the Regional Multiple Listing Service of Minnesota, Inc Broker Reciprocity (sm) program, allowing us to display other broker's listings on our website. All properties are subject to change or withdrawal.

#### Additional Features:

**Basement:** Crawl Space **Fuel:** Electric, Propane, Wood **Garage:** 1 **Heat:** Baseboard, Forced Air, Fireplace(s) **Sewer:** Septic System Compliant - Yes, Tank with Drainage Field **Water:** Submersible 4 Inch Well **Air Conditioning:** Central Air



Call Affinity Real Estate

**218-237-3333**

[info@affinityrealestate.com](mailto:info@affinityrealestate.com)



Affinity Real Estate - 600 Park Avenue South - Park Rapids MN 56470

#### Driving Directions:

FROM LONGVILLE, SOUTH ON HWY 94 TO HWY 54 TO CTY 100, APPROX 3/4 MILE TO PROPERTY ON LEFT



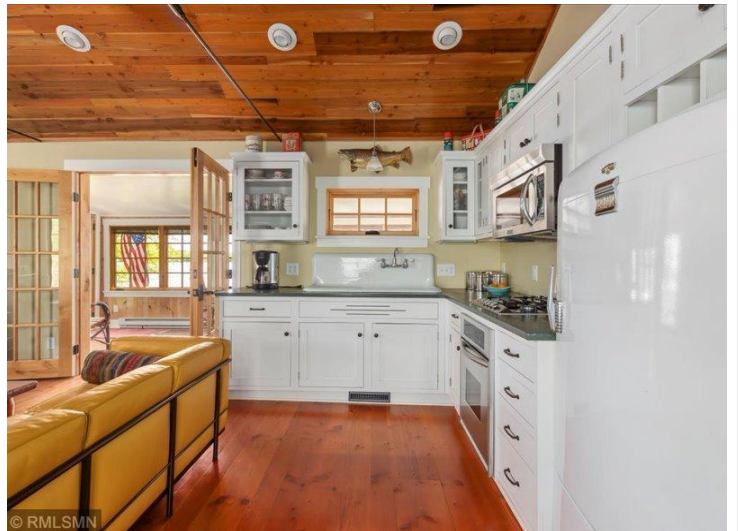


website: [www.AffinityRealEstate.com](http://www.AffinityRealEstate.com) | email: [info@affinityrealestate.com](mailto:info@affinityrealestate.com) | office: 218-237-3333 | fax: 218-237-3377

**Affinity**  
REAL ESTATE INC

**\$435,000**  
MLS 6723444 Lake Home  
1325 Wabedo Pass Road  
Longville MN 56655





website: [www.AffinityRealEstate.com](http://www.AffinityRealEstate.com) | email: [info@affinityrealestate.com](mailto:info@affinityrealestate.com) | office: 218-237-3333 | fax: 218-237-3377

**Affinity**  
REAL ESTATE INC

**\$435,000**  
MLS 6723444 Lake Home  
1325 Wabedo Pass Road  
Longville MN 56655





website: [www.AffinityRealEstate.com](http://www.AffinityRealEstate.com) | email: [info@affinityrealestate.com](mailto:info@affinityrealestate.com) | office: 218-237-3333 | fax: 218-237-3377

**Affinity**  
REAL ESTATE INC

**\$435,000**  
MLS 6723444 Lake Home  
1325 Wabedo Pass Road  
Longville MN 56655





website: [www.AffinityRealEstate.com](http://www.AffinityRealEstate.com) | email: [info@affinityrealestate.com](mailto:info@affinityrealestate.com) | office: 218-237-3333 | fax: 218-237-3377



**\$435,000**

MLS 6723444 Lake Home  
1325 Wabedo Pass Road  
Longville MN 56655





website: [www.AffinityRealEstate.com](http://www.AffinityRealEstate.com) | email: [info@affinityrealestate.com](mailto:info@affinityrealestate.com) | office: 218-237-3333 | fax: 218-237-3377



**\$435,000**  
 MLS 6723444 Lake Home  
 1325 Wabedo Pass Road  
 Longville MN 56655





website: [www.AffinityRealEstate.com](http://www.AffinityRealEstate.com) | email: [info@affinityrealestate.com](mailto:info@affinityrealestate.com) | office: 218-237-3333 | fax: 218-237-3377

**Affinity**  
REAL ESTATE INC

**\$435,000**

MLS 6723444 Lake Home  
1325 Wabedo Pass Road  
Longville MN 56655





website: [www.AffinityRealEstate.com](http://www.AffinityRealEstate.com) | email: [info@affinityrealestate.com](mailto:info@affinityrealestate.com) | office: 218-237-3333 | fax: 218-237-3377

**Affinity**  
REAL ESTATE INC

**\$435,000**  
MLS 6723444 Lake Home  
1325 Wabedo Pass Road  
Longville MN 56655





website: [www.AffinityRealEstate.com](http://www.AffinityRealEstate.com) | email: [info@affinityrealestate.com](mailto:info@affinityrealestate.com) | office: 218-237-3333 | fax: 218-237-3377



**\$435,000**

MLS 6723444 Lake Home  
1325 Wabedo Pass Road  
Longville MN 56655