



MLS 6723870 Land

\$209,900

40 Acres
Raw Land

TBD Mary Yellowhead Rd
Ogema MN 56569

Status: Pending

Description:

Mary Yellowhead Hunting Land! 40 Acres of prime hunting land with private easement access to Fish Lake. This hunting land has produced many memorable hunts. Choose your game by the season, Deer, Bear, all the way down to the small game and waterfowl have been spotted. There are several cleared hunting trails providing sightlines and cover. With some wet marsh and high ground, the trails show quality choke points for your perfect shot! The eastern border connects to 80 additional acres of DNR Land!

The PRIVATE GATED access to public land on FISH LAKE is included in this sale. The easement is through private land so you will never have a crowd on this beautiful crystal clear, spring fed lake. With 88 acres, 20 ft water clarity and 59 ft of depth, this provides for excellent fishing. This is a must see to appreciate this remote hunting land that is still only 35 minutes from Detroit Lakes. An appointment is required to show.

Additional Details:

Lot Acres	40
Lot Dimensions	1320x1320x1320x1320
School District	22
Taxes	\$376
Taxes with Assessments	\$376
Tax Year	2024

Additional Features:

Driving Directions:

From Ogema, Head east on Main St toward 4th St, Follow County Rd 34, Co Hwy 21 and Co Rd 110 to 310 Ave in Sugar Bush Township 19 miles.



Listed By:
Jack Chivers Realty

Affinity Real Estate Inc. participates in the Regional Multiple Listing Service of Minnesota, Inc Broker Reciprocity (sm) program, allowing us to display other broker's listings on our website. All properties are subject to prior sale, change or withdrawal.



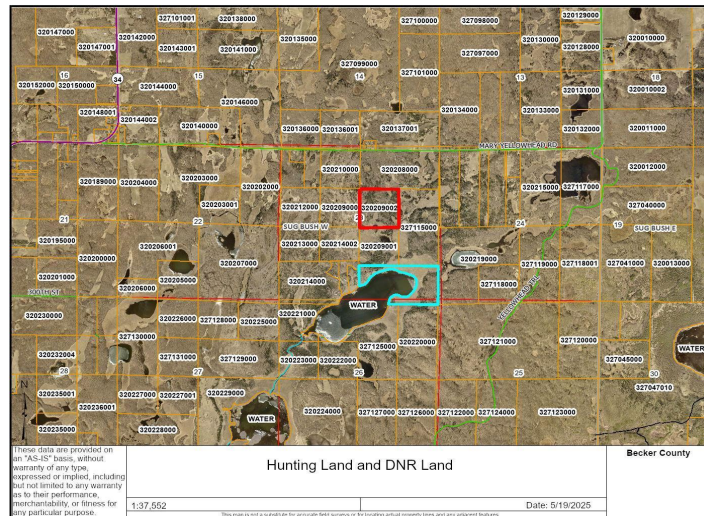
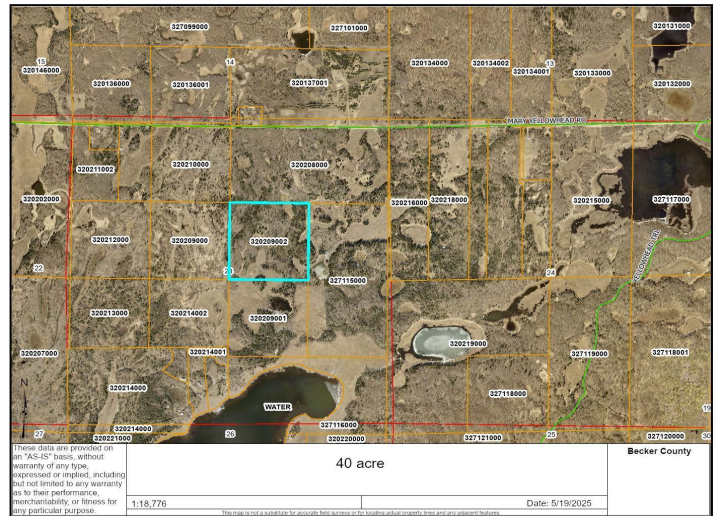
Call Affinity Real Estate

218-237-3333

info@affinityrealestate.com



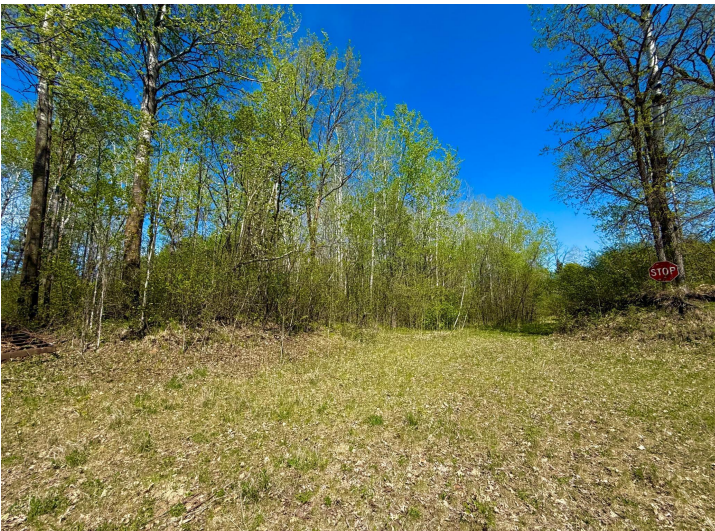
Affinity Real Estate - 600 Park Avenue South - Park Rapids MN 56470



website: www.AffinityRealEstate.com | email: info@affinityrealestate.com | office: 218-237-3333 | fax: 218-237-3377

Affinity
REAL ESTATE INC

\$209,900
MLS 6723870 Land
TBD Mary Yellowhead Rd
Ogema MN 56569



website: www.AffinityRealEstate.com | email: info@affinityrealestate.com | office: 218-237-3333 | fax: 218-237-3377



\$209,900
 MLS 6723870 Land
 TBD Mary Yellowhead Rd
 Ogema MN 56569



website: www.AffinityRealEstate.com | email: info@affinityrealestate.com | office: 218-237-3333 | fax: 218-237-3377



\$209,900
MLS 6723870 Land
TBD Mary Yellowhead Rd
Ogema MN 56569



website: www.AffinityRealEstate.com | email: info@affinityrealestate.com | office: 218-237-3333 | fax: 218-237-3377



\$209,900
MLS 6723870 Land
TBD Mary Yellowhead Rd
Ogema MN 56569



website: www.AffinityRealEstate.com | email: info@affinityrealestate.com | office: 218-237-3333 | fax: 218-237-3377



\$209,900

MLS 6723870 Land
TBD Mary Yellowhead Rd
Ogema MN 56569



website: www.AffinityRealEstate.com | email: info@affinityrealestate.com | office: 218-237-3333 | fax: 218-237-3377



\$209,900
 MLS 6723870 Land
 TBD Mary Yellowhead Rd
 Ogema MN 56569



website: www.AffinityRealEstate.com | email: info@affinityrealestate.com | office: 218-237-3333 | fax: 218-237-3377



\$209,900
MLS 6723870 Land
TBD Mary Yellowhead Rd
Ogema MN 56569



website: www.AffinityRealEstate.com | email: info@affinityrealestate.com | office: 218-237-3333 | fax: 218-237-3377



\$209,900
MLS 6723870 Land
TBD Mary Yellowhead Rd
Ogema MN 56569



website: www.AffinityRealEstate.com | email: info@affinityrealestate.com | office: 218-237-3333 | fax: 218-237-3377



\$209,900
 MLS 6723870 Land
 TBD Mary Yellowhead Rd
 Ogema MN 56569