



MLS 6724009 Lake Land

**\$129,900**

**Description:**

Beautiful 2.7-Acre Lot with Stream Flowing from Clear Lake to Ossawinnamakee Lake!

This picturesque wooded lot features a natural stream flowing from Clear Lake to Ossawinnamakee Lake, offering a serene and unique setting. With a driveway already in place and a cleared building site, it's ready for your dream home or cabin getaway. Nestled in the heart of lake and golf country, you'll enjoy easy access to some of the area's best recreation. Includes a 1/8 interest in Out lots A & B – see plat for details. Don't miss out on this exceptional property!

**Additional Details:**

Lot Acres	2.78
Lot Dimensions	426x526x173x474
School District	186
Taxes	\$108
Taxes with Assessments	\$108
Tax Year	2024

**Additional Features:**

**Driving Directions:**

County Road 16 to Forest Knolls Road to Hidden Creek Court.



Listed By:  
Coldwell Banker Crown Realtors

Affinity Real Estate Inc. participates in the Regional Multiple Listing Service of Minnesota, Inc Broker Reciprocity (sm) program, allowing us to display other broker's listings on our website. All properties are subject to prior sale, change or withdrawal.



**Call Affinity Real Estate**

**218-237-3333**

**info@affinityrealestate.com**



**Affinity Real Estate - 600 Park Avenue South - Park Rapids MN 56470**





website: [www.AffinityRealEstate.com](http://www.AffinityRealEstate.com) | email: [info@affinityrealestate.com](mailto:info@affinityrealestate.com) | office: 218-237-3333 | fax: 218-237-3377



**\$129,900**  
 MLS 6724009 Lake Land  
 8366 Hidden Creek Court  
 Pequot Lakes MN 56472





website: [www.AffinityRealEstate.com](http://www.AffinityRealEstate.com) | email: [info@affinityrealestate.com](mailto:info@affinityrealestate.com) | office: 218-237-3333 | fax: 218-237-3377



**\$129,900**

MLS 6724009 Lake Land  
8366 Hidden Creek Court  
Pequot Lakes MN 56472





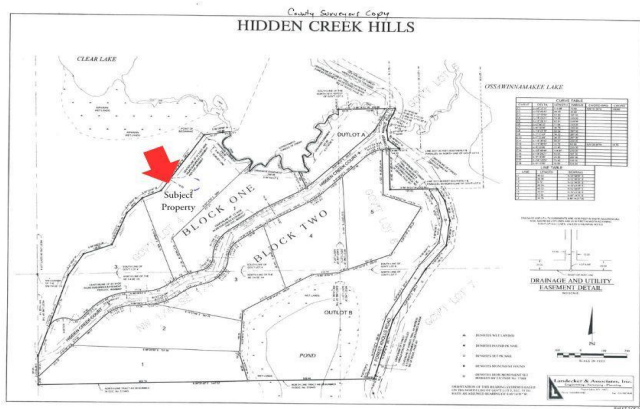
website: [www.AffinityRealEstate.com](http://www.AffinityRealEstate.com) | email: [info@affinityrealestate.com](mailto:info@affinityrealestate.com) | office: 218-237-3333 | fax: 218-237-3377



**\$129,900**

MLS 6724009 Lake Land  
8366 Hidden Creek Court  
Pequot Lakes MN 56472





website: [www.AffinityRealEstate.com](http://www.AffinityRealEstate.com) | email: [info@affinityrealestate.com](mailto:info@affinityrealestate.com) | office: 218-237-3333 | fax: 218-237-3377



**\$129,900**  
 MLS 6724009 Lake Land  
 8366 Hidden Creek Court  
 Pequot Lakes MN 56472