



MLS 6724204 Lake Home

\$834,900

2,452 sq ft
3 bedrooms
3 baths

21641 Echo Lane
Nevis MN 56467

Waterfront: Belle Taine

Status: Closed

Description:

Northwoods Lake Home on Belle Taine Lake – A True Minnesota Retreat.

Escape to the serenity of lake life with this stunning 3 bed, 3 bath home nestled on the shores of beautiful Belle Taine Lake near Nevis, Minnesota. Featuring hand-hewn log siding and approximately 200' of shoreline with a hard sand bottom and gentle elevation to the water. This property is the perfect blend of rustic charm and modern comfort.


Inside, enjoy approximately 2,500 finished square feet with a spacious great room that combines the living room, dining area, and kitchen, all centered around an eye-catching stone fireplace and vaulted ceilings. The main floor hosts the primary bedroom and all essential living facilities, accessible with minimal steps from the back entry near the garage.

Additional features include: Two bonus areas in the loft and lower level, ideal for entertaining, two lower-level bedrooms for guests or family, a roomy 3-season porch to enjoy the outdoors year-round, covered entries and multiple composite decks with beautiful lake views, detached 2-car garage and asphalt driveway (sealed in 2024), washer & dryer included, new furnace installed Fall 2024, leased 1,000-gallon underground propane tank.

This lake home offers peace, privacy, and practicality—ready for year-round living or weekend getaways. With easy lake access and proximity to Park Rapids activities, this home is ideal for fishing, boating, and outdoor enthusiasts. Don't miss your chance to own a piece of the Northwoods lifestyle.

Additional Details:

Year Built	2006
Lot Acres	0.52
Lot Dimensions	200x399x240
Garage Stalls	2
School District	308
Taxes	\$4,149
Taxes with Assessments	\$4,370
Tax Year	2025



Listed By:
Coldwell Banker Crown Realtors

Fuel: Propane, Heat: Forced Air, Fireplace(s): Heat Pump

Service of Minnesota, Inc Broker Reciprocity (sm) program, allowing us to display other broker's listings on our website. All properties are from other brokers.

Driving Directions:
From 21641 Echo Lane, turn left on State 226 for 1 mile to 200th street, right for 2 miles to 219th Ave. Turn right on 219th Ave for 0.5 miles to a light on Echo Drive for 0.7 miles to Echo Lane. Right on Echo Lane to #21641.



Call Affinity Real Estate

218-237-3333

info@affinityrealestate.com



Affinity Real Estate - 600 Park Avenue South - Park Rapids MN 56470



website: www.AffinityRealEstate.com | email: info@affinityrealestate.com | office: 218-237-3333 | fax: 218-237-3377

Affinity
REAL ESTATE INC

\$834,900
MLS 6724204 Lake Home
21641 Echo Lane
Nevis MN 56467



website: www.AffinityRealEstate.com | email: info@affinityrealestate.com | office: 218-237-3333 | fax: 218-237-3377

Affinity
REAL ESTATE INC

\$834,900
MLS 6724204 Lake Home
21641 Echo Lane
Nevis MN 56467



website: www.AffinityRealEstate.com | email: info@affinityrealestate.com | office: 218-237-3333 | fax: 218-237-3377

Affinity
REAL ESTATE INC

\$834,900
MLS 6724204 Lake Home
21641 Echo Lane
Nevis MN 56467



website: www.AffinityRealEstate.com | email: info@affinityrealestate.com | office: 218-237-3333 | fax: 218-237-3377



\$834,900
 MLS 6724204 Lake Home
 21641 Echo Lane
 Nevis MN 56467



website: www.AffinityRealEstate.com | email: info@affinityrealestate.com | office: 218-237-3333 | fax: 218-237-3377

Affinity
REAL ESTATE INC

\$834,900
MLS 6724204 Lake Home
21641 Echo Lane
Nevis MN 56467



website: www.AffinityRealEstate.com | email: info@affinityrealestate.com | office: 218-237-3333 | fax: 218-237-3377

Affinity
REAL ESTATE INC

\$834,900
MLS 6724204 Lake Home
21641 Echo Lane
Nevis MN 56467



website: www.AffinityRealEstate.com | email: info@affinityrealestate.com | office: 218-237-3333 | fax: 218-237-3377

Affinity
REAL ESTATE INC

\$834,900
MLS 6724204 Lake Home
21641 Echo Lane
Nevis MN 56467



website: www.AffinityRealEstate.com | email: info@affinityrealestate.com | office: 218-237-3333 | fax: 218-237-3377



\$834,900
 MLS 6724204 Lake Home
 21641 Echo Lane
 Nevis MN 56467



website: www.AffinityRealEstate.com | email: info@affinityrealestate.com | office: 218-237-3333 | fax: 218-237-3377



\$834,900
 MLS 6724204 Lake Home
 21641 Echo Lane
 Nevis MN 56467



website: www.AffinityRealEstate.com | email: info@affinityrealestate.com | office: 218-237-3333 | fax: 218-237-3377

Affinity
REAL ESTATE INC

\$834,900

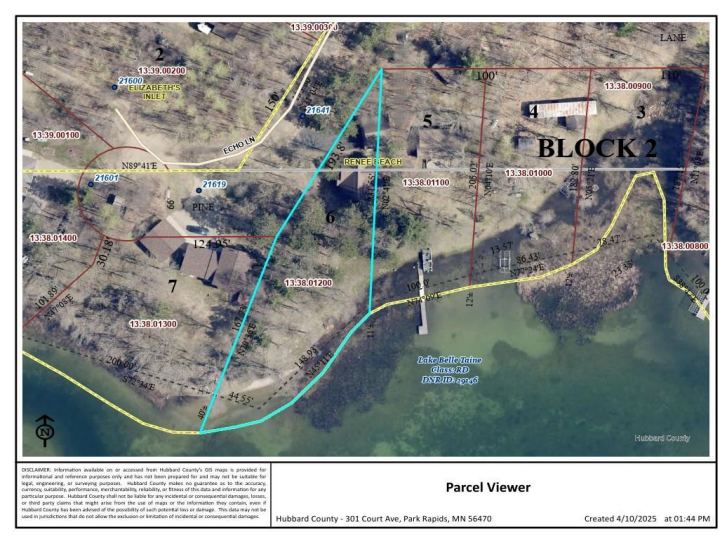
MLS 6724204 Lake Home
21641 Echo Lane
Nevis MN 56467



website: www.AffinityRealEstate.com | email: info@affinityrealestate.com | office: 218-237-3333 | fax: 218-237-3377

Affinity
REAL ESTATE INC

\$834,900
MLS 6724204 Lake Home
21641 Echo Lane
Nevis MN 56467



website: www.AffinityRealEstate.com | email: info@affinityrealestate.com | office: 218-237-3333 | fax: 218-237-3377



\$834,900
MLS 6724204 Lake Home
21641 Echo Lane
Nevis MN 56467