



MLS 6724265 Land

**\$17,500**

1.19 Acres  
Raw Land

Tract H State Hwy 25  
Brainerd MN 56401

Status: Active

**Description:**

Great location for this commercially zoned piece of ground, just outside of Brainerd city limits. Road access in place on Hwy 25 makes this a great option for a number of possibilities.

**Additional Details:**

Lot Acres	1.19
Lot Dimensions	498x260x407
School District	181
Taxes	\$198
Taxes with Assessments	\$198
Tax Year	2025

**Additional Features:**

**Driving Directions:**

E on Washington St/State Hwy 210, merge right onto State Hwy 25.



Listed By:  
Positive Realty

Affinity Real Estate Inc. participates in the Regional Multiple Listing Service of Minnesota, Inc Broker Reciprocity (sm) program, allowing us to display other broker's listings on our website. All properties are subject to prior sale, change or withdrawal.



**Call Affinity Real Estate**

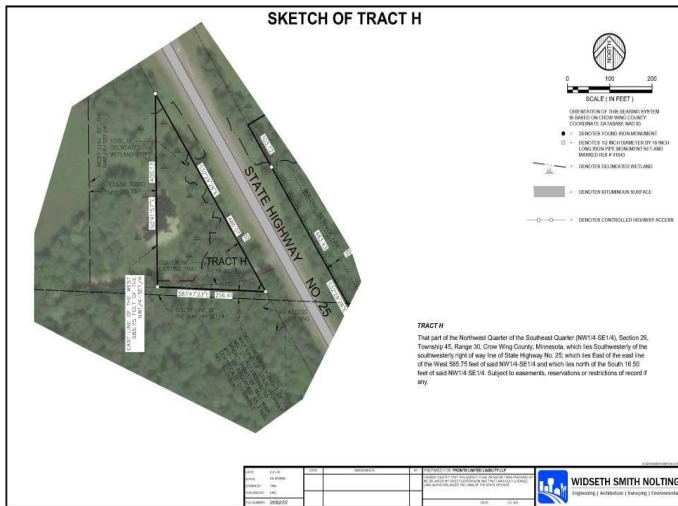
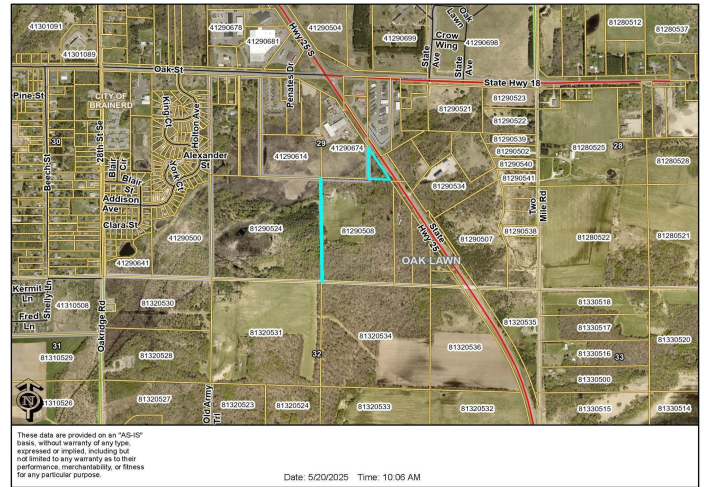
**218-237-3333**

**info@affinityrealestate.com**



**Affinity Real Estate - 600 Park Avenue South - Park Rapids MN 56470**





website: [www.AffinityRealEstate.com](http://www.AffinityRealEstate.com) | email: [info@affinityrealestate.com](mailto:info@affinityrealestate.com) | office: 218-237-3333 | fax: 218-237-3377

**Affinity**  
REAL ESTATE INC

**\$17,500**  
MLS 6724265 Land  
Tract H State Hwy 25  
Brainerd MN 56401





website: [www.AffinityRealEstate.com](http://www.AffinityRealEstate.com) | email: [info@affinityrealestate.com](mailto:info@affinityrealestate.com) | office: 218-237-3333 | fax: 218-237-3377



**\$17,500**  
MLS 6724265 Land  
Tract H State Hwy 25  
Brainerd MN 56401