



MLS 6724379 Lake Land

\$259,000

Description:

Discover the perfect canvas for your dream lakeside retreat on the serene shores of Lake Crystal. This exceptional offering includes three contiguous lots—Lot 4, Lot 5, and Lot 6—boasting an impressive 150 feet of shoreline. The expansive layout provides ample space and flexibility for designing a custom property tailored to your vision. Renowned for its excellent fishing and diverse water activities, Lake Crystal offers an idyllic blend of recreation and tranquility, making it an ideal destination for year-round enjoyment.

Seller is paying \$5000 in closing costs.

Additional Details:

Lot Acres	0.8
Lot Dimensions	236x57
School District	548
Taxes	\$470
Taxes with Assessments	\$470
Tax Year	2024

Additional Features:

Driving Directions:

From Pelican Rapids: North on Hwy #59. East on Hwy #4 approx. 6 miles. North on Crystal Hills Dr. Lot is near the end of the road.



Listed By:
REAL (3064 FGO)

Affinity Real Estate Inc. participates in the Regional Multiple Listing Service of Minnesota, Inc Broker Reciprocity (sm) program, allowing us to display other broker's listings on our website. All properties are subject to prior sale, change or withdrawal.



Call Affinity Real Estate

218-237-3333

info@affinityrealestate.com



Affinity Real Estate - 600 Park Avenue South - Park Rapids MN 56470



website: www.AffinityRealEstate.com | email: info@affinityrealestate.com | office: 218-237-3333 | fax: 218-237-3377

Affinity
REAL ESTATE INC

\$259,000

MLS 6724379 Lake Land
Lots 4, 5 & 6 Crystal Hills Dr
Pelican Rapids MN 56572

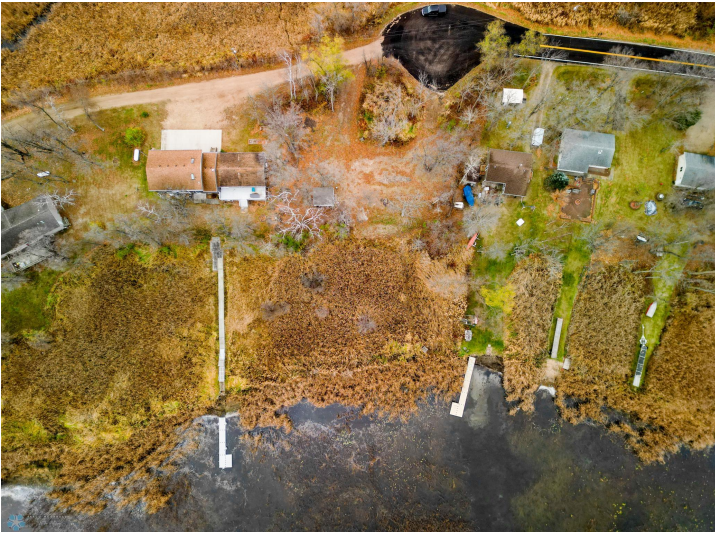


website: www.AffinityRealEstate.com | email: info@affinityrealestate.com | office: 218-237-3333 | fax: 218-237-3377



\$259,000

MLS 6724379 Lake Land
Lots 4, 5 & 6 Crystal Hills Dr
Pelican Rapids MN 56572



website: www.AffinityRealEstate.com | email: info@affinityrealestate.com | office: 218-237-3333 | fax:218-237-3377



\$259,000

MLS 6724379 Lake Land
Lots 4, 5 & 6 Crystal Hills Dr
Pelican Rapids MN 56572