



MLS 6724427 Lake Home

\$369,900

937 sq ft
1 bedrooms
1 baths

55746 Pleasant Circle
Max MN 56659

Waterfront: Sand Lake (31082600)

Status: Active

Description:

Experience the perfect blend of rustic charm and modern comfort in this stunning, hand-scribed log home nestled on just over 1 acre with 154 feet of prime sand-bottom shoreline on Sand Lake. This exceptional property offers easy, gradual-level access to the water—ideal for families, anglers, and outdoor enthusiasts alike.

This year-round cabin with an insulated crawl space, is filled with natural light, thanks to multiple skylights that accentuate the warmth of the select maple floors and cabinetry.

Enjoy a fast, high speed fiber internet connection as you take in panoramic lake views through expansive lakeside windows, or cozy up beside the inviting gas fireplace in the open-concept living area. The spacious loft provides additional sleeping quarters, perfect for hosting family and friends.

Step outside onto the 12x12 deck to take in the peaceful surroundings, or take advantage of the private dock, making lake access effortless. A 10x16 storage shed offers ample space for all your recreational gear. A private boat ramp for lake access for you and your neighbors sits adjacent to the property.

Whether you're into fishing, boating, ATV riding, snowmobiling, hunting, or hiking, this property is ideally located to enjoy it all.

Don't miss this rare opportunity to own a turnkey lakefront retreat on one of the area's most desirable recreational lakes.

Additional Details:

Year Built	1993
Lot Acres	1.05
Lot Dimensions	154x300x165x306
School District	317
Taxes	\$2,258
Taxes with Assessments	\$2,288
Tax Year	2024



Listed By:
Minnesota First Realty

Fuel: Electric **Heat:** Baseboard
Affinity Real Estate Inc. participates in the Regional Multiple Listing Service of Minnesota, Inc Broker Reciprocity (sm) program, allowing us to display other broker's listings on our website. All properties are subject to prior sale, change or withdrawal.
Driving Directions: From hwy 46 turn northbound onto county rd 34, then turn right onto Dinner Creek Rd, then left onto 1007 Sioux City Rd, then right onto Pleasant Circle.



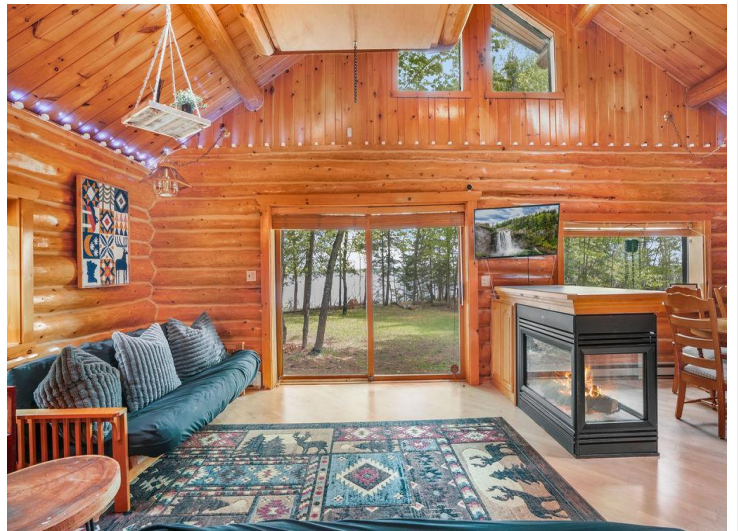
Call Affinity Real Estate

218-237-3333

info@affinityrealestate.com



Affinity Real Estate - 600 Park Avenue South - Park Rapids MN 56470



website: www.AffinityRealEstate.com | email: info@affinityrealestate.com | office: 218-237-3333 | fax: 218-237-3377

Affinity
REAL ESTATE INC

\$369,900
MLS 6724427 Lake Home
55746 Pleasant Circle
Max MN 56659



website: www.AffinityRealEstate.com | email: info@affinityrealestate.com | office: 218-237-3333 | fax: 218-237-3377

Affinity
REAL ESTATE INC

\$369,900
MLS 6724427 Lake Home
55746 Pleasant Circle
Max MN 56659



website: www.AffinityRealEstate.com | email: info@affinityrealestate.com | office: 218-237-3333 | fax: 218-237-3377

Affinity
REAL ESTATE INC

\$369,900
MLS 6724427 Lake Home
55746 Pleasant Circle
Max MN 56659



website: www.AffinityRealEstate.com | email: info@affinityrealestate.com | office: 218-237-3333 | fax: 218-237-3377

Affinity
REAL ESTATE INC

\$369,900
MLS 6724427 Lake Home
55746 Pleasant Circle
Max MN 56659



website: www.AffinityRealEstate.com | email: info@affinityrealestate.com | office: 218-237-3333 | fax: 218-237-3377



\$369,900
MLS 6724427 Lake Home
55746 Pleasant Circle
Max MN 56659



website: www.AffinityRealEstate.com | email: info@affinityrealestate.com | office: 218-237-3333 | fax:218-237-3377



\$369,900

MLS 6724427 Lake Home
55746 Pleasant Circle
Max MN 56659