



MLS 6724553 Residential

**\$725,000**

4,514 sq ft  
5 bedrooms  
4 baths

16524 Piper Lane  
Brainerd MN 56401

Status: Active

#### Description:

Welcome to your dream home! This modern living 5-bedroom, 4-bathroom home was built in 2022. Located on a private road, this property sits on a spacious 2.7-acre lot where you own half of the cul-de-sac. The kitchen features top-of-the-line stainless steel appliances with gas stove and double oven, corner pantry, granite countertops and a spacious island. Fitness enthusiasts will love the indoor sport court and exercise room. The home also features dual-zone heating and air conditioning for optimal comfort. Don't forget the fenced-in back yard, perfect for pets or kids to play safely, and the maintenance free back deck. The insulated and heated 4-car garage has floor drains and a utility sink. The irrigation system keeps your yard meticulously lush and looking pristine along the paver patio. Whether you're hosting a summer barbecue or enjoying a quiet evening under the stars, you'll love the outdoor space. Just a short drive away to the highway for easy access to shopping, dining, and recreational activities in Baxter. Located in the Brainerd School district, with choice of six elementary schools including the popular Nisswa Elementary, Forest View Middle School and Brainerd High School.

#### Additional Details:

Year Built	2022
Lot Acres	2.74
Lot Dimensions	265x484x708x352
Garage Stalls	4
School District	181
Taxes	\$3,429
Taxes with Assessments	\$3,454
Tax Year	2025

#### Additional Features:

**Basement:** Daylight/Lookout Windows, Drain Tiled, Finished, Full, Concrete **Fuel:** Natural Gas **Garage:** 4 **Heat:** Forced Air, Fireplace(s), Zoned **Sewer:** Private Sewer, Septic System Compliant - Yes, Tank with Drainage Field **Water:** Submersible - 4 Inch, Drilled, Private, Well **Air Conditioning:** Central Air, Dual, Zoned

#### Driving Directions:

From Brainerd Take 371 North to Left on Barbeau Road to left on Piper Ln to end of cul-de-sac and home on right



Listed By:  
Dane Arthur Real Estate Agency-Crosslake

Affinity Real Estate Inc. participates in the Regional Multiple Listing Service of Minnesota, Inc Broker Reciprocity (sm) program, allowing us to display other broker's listings on our website. All properties are subject to prior sale, change or withdrawal.



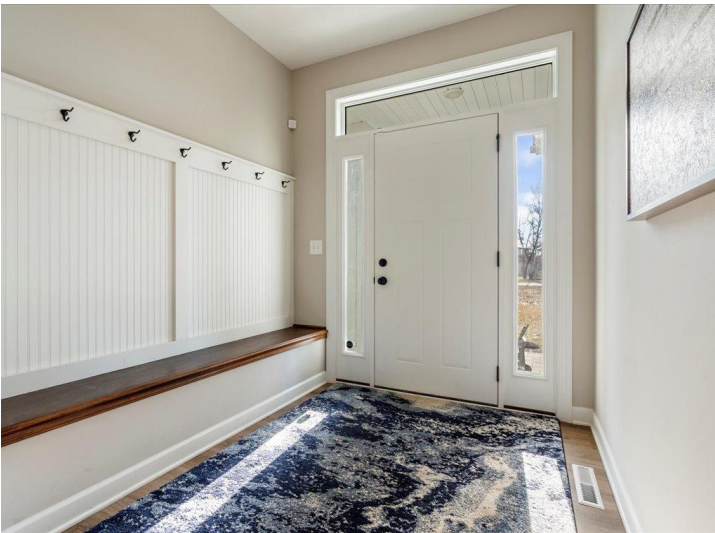
Call Affinity Real Estate

**218-237-3333**

[info@affinityrealestate.com](mailto:info@affinityrealestate.com)



Affinity Real Estate - 600 Park Avenue South - Park Rapids MN 56470



website: [www.AffinityRealEstate.com](http://www.AffinityRealEstate.com) | email: [info@affinityrealestate.com](mailto:info@affinityrealestate.com) | office: 218-237-3333 | fax: 218-237-3377

**Affinity**  
REAL ESTATE INC

**\$725,000**  
MLS 6724553 Residential  
16524 Piper Lane  
Brainerd MN 56401





website: [www.AffinityRealEstate.com](http://www.AffinityRealEstate.com) | email: [info@affinityrealestate.com](mailto:info@affinityrealestate.com) | office: 218-237-3333 | fax: 218-237-3377

**Affinity**  
REAL ESTATE INC

**\$725,000**  
MLS 6724553 Residential  
16524 Piper Lane  
Brainerd MN 56401



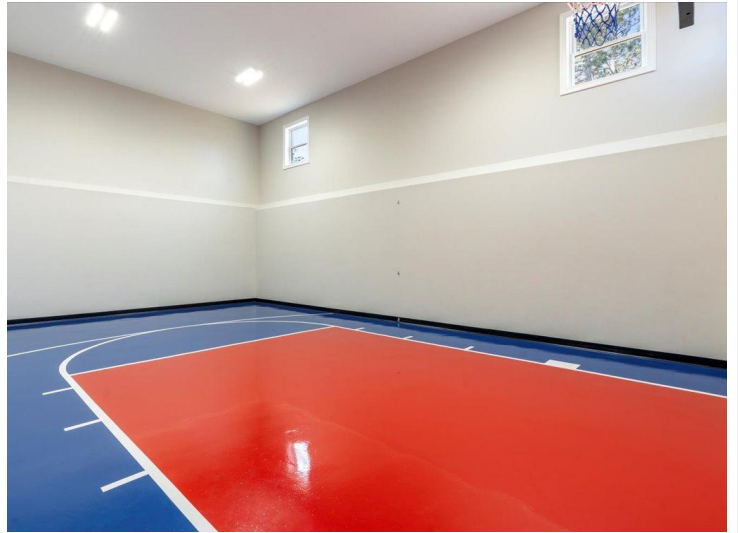


website: [www.AffinityRealEstate.com](http://www.AffinityRealEstate.com) | email: [info@affinityrealestate.com](mailto:info@affinityrealestate.com) | office: 218-237-3333 | fax: 218-237-3377



**\$725,000**  
 MLS 6724553 Residential  
 16524 Piper Lane  
 Brainerd MN 56401



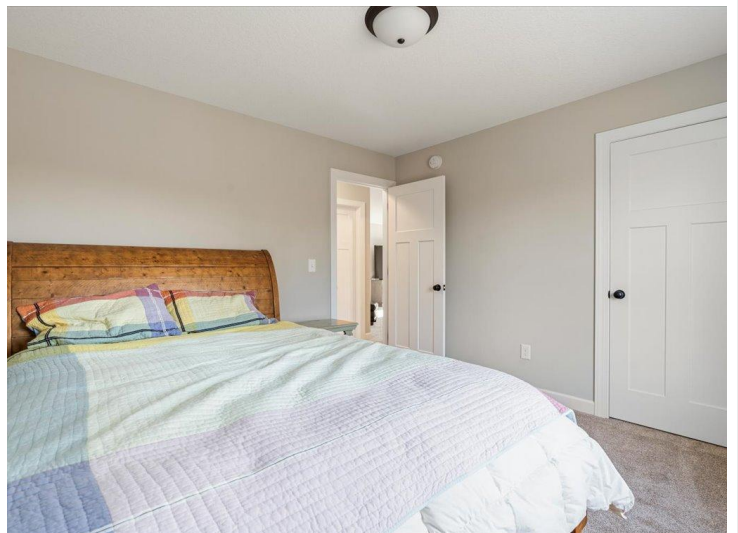


website: [www.AffinityRealEstate.com](http://www.AffinityRealEstate.com) | email: [info@affinityrealestate.com](mailto:info@affinityrealestate.com) | office: 218-237-3333 | fax: 218-237-3377



**\$725,000**  
MLS 6724553 Residential  
16524 Piper Lane  
Brainerd MN 56401





website: [www.AffinityRealEstate.com](http://www.AffinityRealEstate.com) | email: [info@affinityrealestate.com](mailto:info@affinityrealestate.com) | office: 218-237-3333 | fax: 218-237-3377

**Affinity**  
REAL ESTATE INC

**\$725,000**  
MLS 6724553 Residential  
16524 Piper Lane  
Brainerd MN 56401





website: [www.AffinityRealEstate.com](http://www.AffinityRealEstate.com) | email: [info@affinityrealestate.com](mailto:info@affinityrealestate.com) | office: 218-237-3333 | fax: 218-237-3377



**\$725,000**  
 MLS 6724553 Residential  
 16524 Piper Lane  
 Brainerd MN 56401



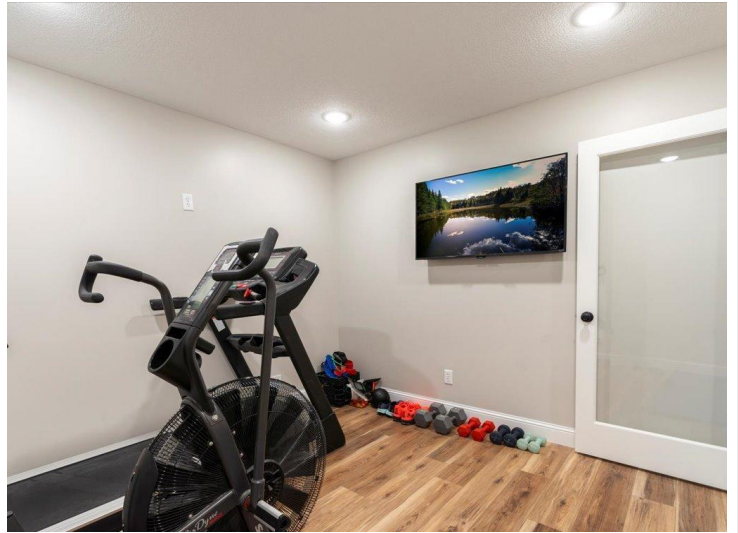


website: [www.AffinityRealEstate.com](http://www.AffinityRealEstate.com) | email: [info@affinityrealestate.com](mailto:info@affinityrealestate.com) | office: 218-237-3333 | fax: 218-237-3377



**\$725,000**  
 MLS 6724553 Residential  
 16524 Piper Lane  
 Brainerd MN 56401



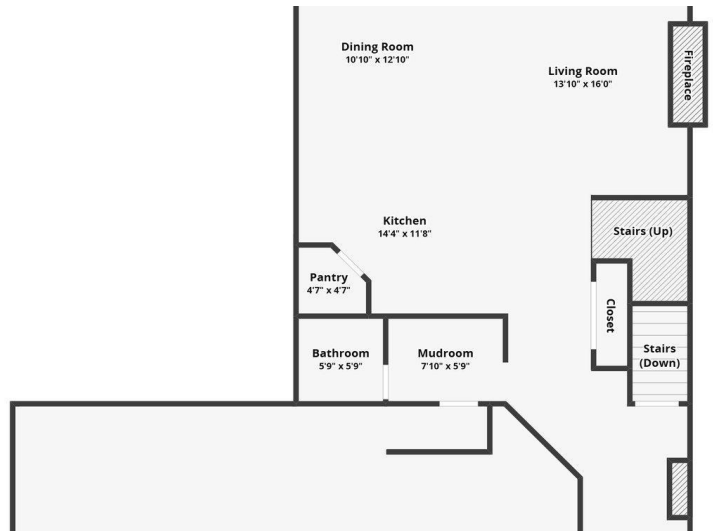
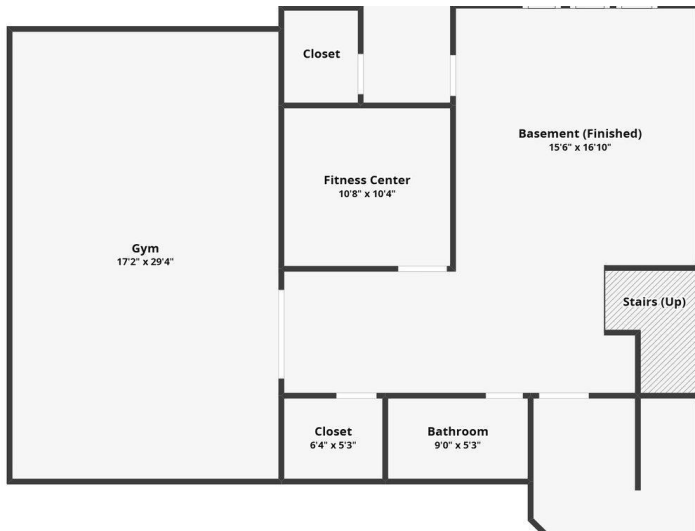
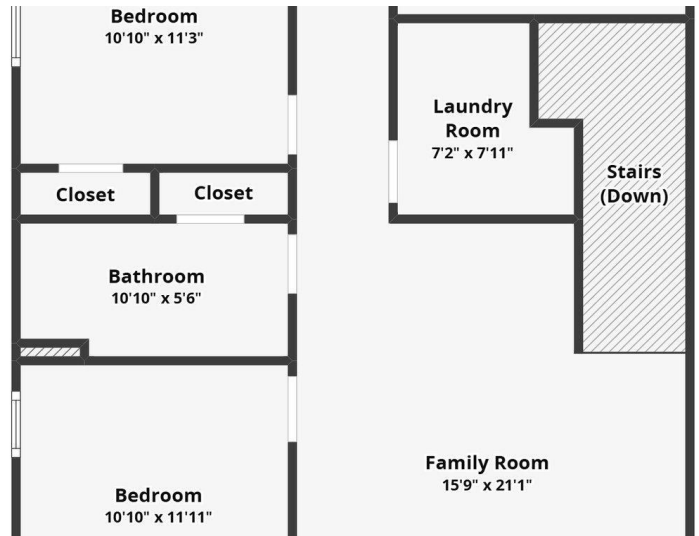


website: [www.AffinityRealEstate.com](http://www.AffinityRealEstate.com) | email: [info@affinityrealestate.com](mailto:info@affinityrealestate.com) | office: 218-237-3333 | fax: 218-237-3377



**\$725,000**  
 MLS 6724553 Residential  
 16524 Piper Lane  
 Brainerd MN 56401





website: [www.AffinityRealEstate.com](http://www.AffinityRealEstate.com) | email: [info@affinityrealestate.com](mailto:info@affinityrealestate.com) | office: 218-237-3333 | fax: 218-237-3377

**Affinity**  
REAL ESTATE INC

**\$725,000**  
MLS 6724553 Residential  
16524 Piper Lane  
Brainerd MN 56401





website: [www.AffinityRealEstate.com](http://www.AffinityRealEstate.com) | email: [info@affinityrealestate.com](mailto:info@affinityrealestate.com) | office: 218-237-3333 | fax: 218-237-3377

**Affinity**  
REAL ESTATE INC

**\$725,000**  
MLS 6724553 Residential  
16524 Piper Lane  
Brainerd MN 56401





website: [www.AffinityRealEstate.com](http://www.AffinityRealEstate.com) | email: [info@affinityrealestate.com](mailto:info@affinityrealestate.com) | office: 218-237-3333 | fax: 218-237-3377



**\$725,000**  
 MLS 6724553 Residential  
 16524 Piper Lane  
 Brainerd MN 56401





website: [www.AffinityRealEstate.com](http://www.AffinityRealEstate.com) | email: [info@affinityrealestate.com](mailto:info@affinityrealestate.com) | office: 218-237-3333 | fax: 218-237-3377

**Affinity**  
REAL ESTATE INC

**\$725,000**  
MLS 6724553 Residential  
16524 Piper Lane  
Brainerd MN 56401



website: [www.AffinityRealEstate.com](http://www.AffinityRealEstate.com) | email: [info@affinityrealestate.com](mailto:info@affinityrealestate.com) | office: 218-237-3333 | fax:218-237-3377



**\$725,000**

MLS 6724553 Residential  
16524 Piper Lane  
Brainerd MN 56401