



MLS 6724871 Land

\$250,000

7.5 Acres
Raw Land

2485 Wilderness Drive
Pillager MN 56473

Status: Active

Description:

Don't miss this rare opportunity to build your dream home in this beautiful convenient location. This level 7.50 acer lot offers a peaceful setting just minutes from lakes, shopping, restaurants, and everyday conveniences. The property includes two spacious pole buildings sizes 48x66 and 48x132 perfect for storing your toys, an investment or future use during construction. This is a prime chance to create your dream home in this fantastic location.

Additional Details:

Lot Acres	7.5
Lot Dimensions	Irregular
School District	116
Taxes	\$1,482
Taxes with Assessments	\$1,632
Tax Year	2025

Additional Features:

Driving Directions:

From 371 and 210 intersection in Baxter head west on 210 approximately 8.2 miles to right on Wilderness Dr to property on left.



Listed By:
Positive Realty

Affinity Real Estate Inc. participates in the Regional Multiple Listing Service of Minnesota, Inc Broker Reciprocity (sm) program, allowing us to display other broker's listings on our website. All properties are subject to prior sale, change or withdrawal.



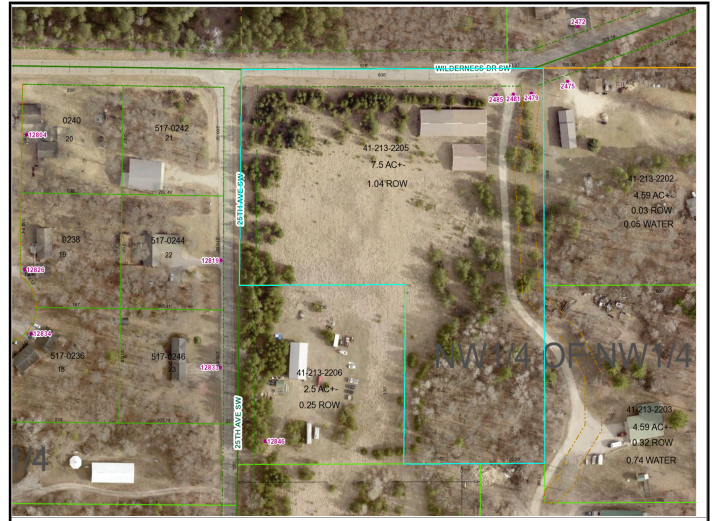
Call Affinity Real Estate

218-237-3333

info@affinityrealestate.com



Affinity Real Estate - 600 Park Avenue South - Park Rapids MN 56470



website: www.AffinityRealEstate.com | email: info@affinityrealestate.com | office: 218-237-3333 | fax: 218-237-3377



\$250,000
MLS 6724871 Land
2485 Wilderness Drive
Pillager MN 56473



website: www.AffinityRealEstate.com | email: info@affinityrealestate.com | office: 218-237-3333 | fax: 218-237-3377



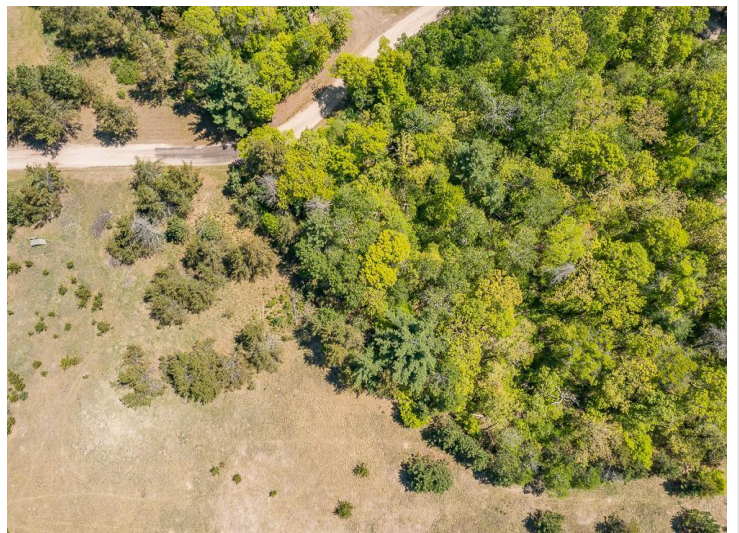
\$250,000
 MLS 6724871 Land
 2485 Wilderness Drive
 Pillager MN 56473



website: www.AffinityRealEstate.com | email: info@affinityrealestate.com | office: 218-237-3333 | fax: 218-237-3377



\$250,000
 MLS 6724871 Land
 2485 Wilderness Drive
 Pillager MN 56473



website: www.AffinityRealEstate.com | email: info@affinityrealestate.com | office: 218-237-3333 | fax: 218-237-3377



\$250,000
 MLS 6724871 Land
 2485 Wilderness Drive
 Pillager MN 56473



website: www.AffinityRealEstate.com | email: info@affinityrealestate.com | office: 218-237-3333 | fax: 218-237-3377



\$250,000
MLS 6724871 Land
2485 Wilderness Drive
Pillager MN 56473



website: www.AffinityRealEstate.com | email: info@affinityrealestate.com | office: 218-237-3333 | fax: 218-237-3377



\$250,000

MLS 6724871 Land
2485 Wilderness Drive
Pillager MN 56473