



MLS 6725126 Commercial

\$259,900

1900 Division Street
Bemidji MN 56601

Status: Active

Description:

Take advantage of this rare chance to own a business condominium in a well-established building, ideally situated in a high-traffic, high-visibility location. Offering 1,578 square feet of open, versatile space, this property is perfectly suited for a professional office or retail business. Features include ample parking on a durable concrete lot. Real estate only — business not included in the sale.

Additional Details:

Year Built	2008
Lot Acres	0.03
Lot Dimensions	irregular
School District	31
Taxes	\$2,514
Taxes with Assessments	\$2,514
Tax Year	2023

Additional Features:

Fuel: Natural Gas **Heat:** Radiant Floor **Sewer:** City Sewer - In Street **Water:** City Water - In Street

Driving Directions:

From downtown, head West on 5th street. Unit is on South side of the road (left).



Listed By:
Grimes Realty

Affinity Real Estate Inc. participates in the Regional Multiple Listing Service of Minnesota, Inc Broker Reciprocity (sm) program, allowing us to display other broker's listings on our website. All properties are subject to prior sale, change or withdrawal.



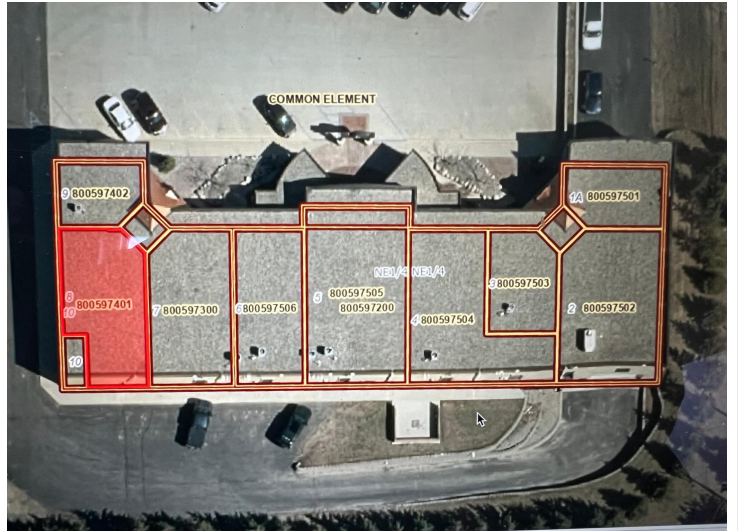
Call Affinity Real Estate

218-237-3333

info@affinityrealestate.com



Affinity Real Estate - 600 Park Avenue South - Park Rapids MN 56470



website: www.AffinityRealEstate.com | email: info@affinityrealestate.com | office: 218-237-3333 | fax: 218-237-3377



\$259,900
 MLS 6725126 Commercial
 1900 Division Street
 Bemidji MN 56601