



MLS 6725137 Land

\$64,900

2.5 Acres
Raw Land

TBD Tract D Little Pine Road
Brainerd MN 56401

Status: Pending

Description:

Private, wooded acreage outside the western edge of Baxter, just south of Cragun's Legacy Golf Course and area bike trails. Enjoy level elevation with beautiful eastern marsh views, all on a paved township road with fiber internet. Though peaceful and private, it's close to everything—north of Hwy 210 in Sylvan Township, Cass County. Located in the Pillager School District, but just a half mile from a Brainerd bus stop, offering flexibility between districts.

Additional Details:

Lot Acres	2.5
Lot Dimensions	200x512x200x510
School District	116
Taxes	\$36
Taxes with Assessments	\$36
Tax Year	2025

Additional Features:

Driving Directions:

W on MN 210 to right onto Little Pine Rd



Listed By:
Positive Realty

Affinity Real Estate Inc. participates in the Regional Multiple Listing Service of Minnesota, Inc Broker Reciprocity (sm) program, allowing us to display other broker's listings on our website. All properties are subject to prior sale, change or withdrawal.



Call Affinity Real Estate

218-237-3333

info@affinityrealestate.com



Affinity Real Estate - 600 Park Avenue South - Park Rapids MN 56470



website: www.AffinityRealEstate.com | email: info@affinityrealestate.com | office: 218-237-3333 | fax: 218-237-3377



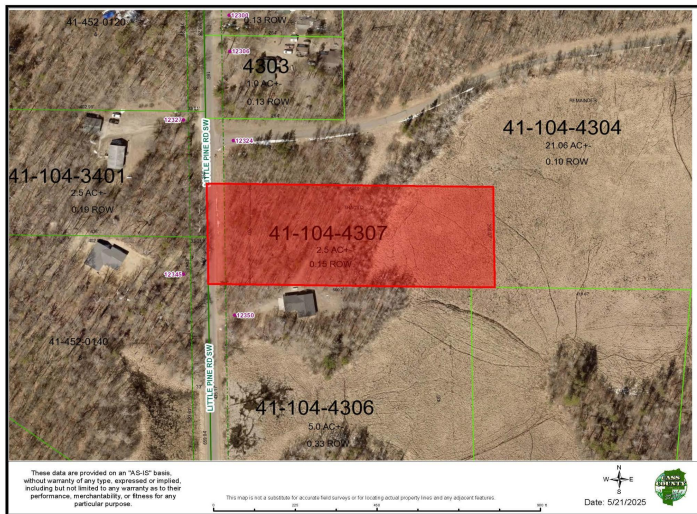
\$64,900
 MLS 6725137 Land
 TBD Tract D Little Pine Road
 Brainerd MN 56401



website: www.AffinityRealEstate.com | email: info@affinityrealestate.com | office: 218-237-3333 | fax: 218-237-3377



\$64,900
 MLS 6725137 Land
 TBD Tract D Little Pine Road
 Brainerd MN 56401



website: www.AffinityRealEstate.com | email: info@affinityrealestate.com | office: 218-237-3333 | fax: 218-237-3377



\$64,900
 MLS 6725137 Land
 TBD Tract D Little Pine Road
 Brainerd MN 56401