



MLS 6725165 Residential

\$329,900

1,980 sq ft
3 bedrooms
2 baths

8731 Chamberlain Lane
Bemidji MN 56601

Status: Pending

Description:

Welcome to this beautifully updated Deerfield Estates home!! This 3 bedroom 2 bath home has been tastefully updated with new flooring throughout the home to include Italian tile in bathrooms and laundry area, along with new lighting and appliances. Large paver patio with fire ring, to enjoy the sunsets and s'mores during the summer months. And for those chilly winter nights, enjoy a movie in the house with a fire in the fireplace. There is also a 2 stall insulated attached garage for cars, and a large 24x32 detached heated and insulated garage for the toys or extra storage, all of this is on 1.5+ acres only 5 minutes from town!!!

Additional Details:

Year Built	2009
Lot Acres	1.59
Lot Dimensions	190x360
Garage Stalls	4
School District	31
Taxes	\$3,916
Taxes with Assessments	\$3,916
Tax Year	2023

Additional Features:

Basement: None **Fuel:** Electric, Propane, Wood **Garage:** 4 **Heat:** Forced Air, Fireplace(s), Wood Stove **Sewer:** Private Sewer **Water:** Submersible - 4 Inch, Private **Air Conditioning:** Central Air

Driving Directions:

north on cardinal rd to right on Feelinrite to a right on Chamberlain. follow to address



Listed By:
218 Real Estate

Affinity Real Estate Inc. participates in the Regional Multiple Listing Service of Minnesota, Inc Broker Reciprocity (sm) program, allowing us to display other broker's listings on our website. All properties are subject to prior sale, change or withdrawal.



Call Affinity Real Estate

218-237-3333

info@affinityrealestate.com



Affinity Real Estate - 600 Park Avenue South - Park Rapids MN 56470



website: www.AffinityRealEstate.com | email: info@affinityrealestate.com | office: 218-237-3333 | fax: 218-237-3377

Affinity
REAL ESTATE INC

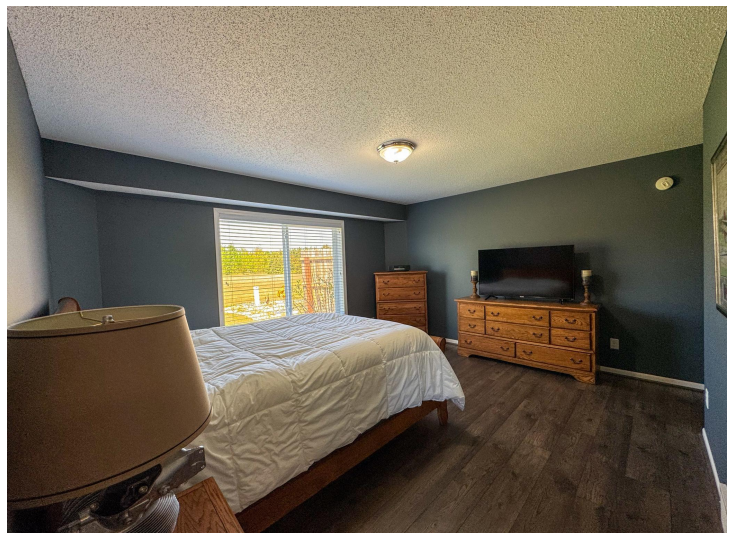
\$329,900
MLS 6725165 Residential
8731 Chamberlain Lane
Bemidji MN 56601



website: www.AffinityRealEstate.com | email: info@affinityrealestate.com | office: 218-237-3333 | fax: 218-237-3377

Affinity
REAL ESTATE INC

\$329,900
MLS 6725165 Residential
8731 Chamberlain Lane
Bemidji MN 56601



website: www.AffinityRealEstate.com | email: info@affinityrealestate.com | office: 218-237-3333 | fax: 218-237-3377

Affinity
REAL ESTATE INC

\$329,900
MLS 6725165 Residential
8731 Chamberlain Lane
Bemidji MN 56601



website: www.AffinityRealEstate.com | email: info@affinityrealestate.com | office: 218-237-3333 | fax: 218-237-3377

Affinity
REAL ESTATE INC

\$329,900
MLS 6725165 Residential
8731 Chamberlain Lane
Bemidji MN 56601



website: www.AffinityRealEstate.com | email: info@affinityrealestate.com | office: 218-237-3333 | fax: 218-237-3377

Affinity
REAL ESTATE INC

\$329,900
MLS 6725165 Residential
8731 Chamberlain Lane
Bemidji MN 56601



website: www.AffinityRealEstate.com | email: info@affinityrealestate.com | office: 218-237-3333 | fax: 218-237-3377

Affinity
REAL ESTATE INC

\$329,900
MLS 6725165 Residential
8731 Chamberlain Lane
Bemidji MN 56601



website: www.AffinityRealEstate.com | email: info@affinityrealestate.com | office: 218-237-3333 | fax: 218-237-3377



\$329,900
 MLS 6725165 Residential
 8731 Chamberlain Lane
 Bemidji MN 56601



website: www.AffinityRealEstate.com | email: info@affinityrealestate.com | office: 218-237-3333 | fax: 218-237-3377



\$329,900
MLS 6725165 Residential
8731 Chamberlain Lane
Bemidji MN 56601