



MLS 6725258 Residential

\$199,000

1,044 sq ft
1 bedrooms
1 baths

115 Mn Highway 78
Ottertail MN 56571

Status: Active

Description:

Very well built cottage in the heart of lakes country. Located in the middle of Ottertail City this house is walking or golf cart distance to the lake, groceries, bars, as well as numerous boutiques and restaurants. This property has also been used in commercial applications in the past. One bedroom + layout. Partial basement.

Additional Details:

Year Built	1930
Lot Acres	0.5
Lot Dimensions	75x250
School District	549
Taxes	\$666
Taxes with Assessments	\$1,024
Tax Year	2023

Additional Features:

Basement: None **Fuel:** Natural Gas **Heat:** Dual **Sewer:** City Sewer/Connected, Private Sewer **Water:** City Water/Connected **Air Conditioning:** Dual

Driving Directions:

From downtown Ottertail take 108 West to Ottertail Lake. The home is on the left very shortly after a right onto 78 North.



Listed By:
Boll Realty

Affinity Real Estate Inc. participates in the Regional Multiple Listing Service of Minnesota, Inc Broker Reciprocity (sm) program, allowing us to display other broker's listings on our website. All properties are subject to prior sale, change or withdrawal.



Call Affinity Real Estate

218-237-3333

info@affinityrealestate.com



Affinity Real Estate - 600 Park Avenue South - Park Rapids MN 56470



website: www.AffinityRealEstate.com | email: info@affinityrealestate.com | office: 218-237-3333 | fax: 218-237-3377

Affinity
REAL ESTATE INC

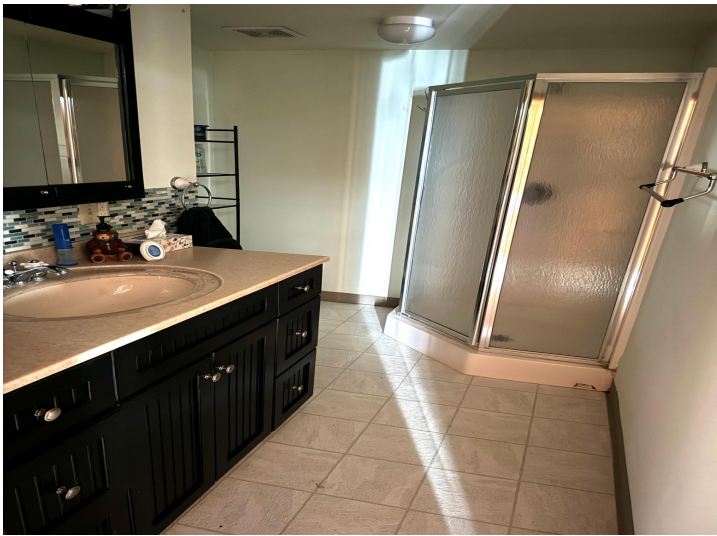
\$199,000
MLS 6725258 Residential
115 Mn Highway 78
Ottertail MN 56571



website: www.AffinityRealEstate.com | email: info@affinityrealestate.com | office: 218-237-3333 | fax: 218-237-3377

Affinity
REAL ESTATE INC

\$199,000
MLS 6725258 Residential
115 Mn Highway 78
Ottertail MN 56571



website: www.AffinityRealEstate.com | email: info@affinityrealestate.com | office: 218-237-3333 | fax: 218-237-3377

Affinity
REAL ESTATE INC

\$199,000
MLS 6725258 Residential
115 Mn Highway 78
Ottertail MN 56571



website: www.AffinityRealEstate.com | email: info@affinityrealestate.com | office: 218-237-3333 | fax: 218-237-3377

Affinity
REAL ESTATE INC

\$199,000
MLS 6725258 Residential
115 Mn Highway 78
Ottertail MN 56571



website: www.AffinityRealEstate.com | email: info@affinityrealestate.com | office: 218-237-3333 | fax: 218-237-3377

Affinity
REAL ESTATE INC

\$199,000
MLS 6725258 Residential
115 Mn Highway 78
Ottertail MN 56571



website: www.AffinityRealEstate.com | email: info@affinityrealestate.com | office: 218-237-3333 | fax: 218-237-3377

Affinity
REAL ESTATE INC

\$199,000
MLS 6725258 Residential
115 Mn Highway 78
Ottertail MN 56571



website: www.AffinityRealEstate.com | email: info@affinityrealestate.com | office: 218-237-3333 | fax: 218-237-3377



\$199,000
 MLS 6725258 Residential
 115 Mn Highway 78
 Ottertail MN 56571



website: www.AffinityRealEstate.com | email: info@affinityrealestate.com | office: 218-237-3333 | fax: 218-237-3377



\$199,000
MLS 6725258 Residential
115 Mn Highway 78
Ottertail MN 56571