

MLS 6725475 Land

**\$214,000**

11.5 Acres

Raw Land

11.5 Acre Lot Nagel Road  
Pequot Lakes MN 56472

Status: Active

**Description:**

Located within a mile and a half of Pequot Lakes, this property is sure to be a very sought after approximately 11.5 acres. Features include slightly rolling land with great soil and has a variety of newly planted pines and other trees. The property not only has an abundance of wildlife, but there are also blackberries, raspberries and blueberries located throughout the property. Sellers have two listings within one property so when an acceptable offer is full signed, the other listing will be cancelled. – Split subject to approval by the City of Pequot Lakes and a Survey. Property is not in a flood zone. Property taxes are "to be determined." (TBD)

**Additional Details:**

Lot Acres	11.5
Lot Dimensions	tbd
School District	186
Taxes	(unreported)
Taxes with Assessments	(unreported)
Tax Year	2024

**Additional Features:**

**Driving Directions:**

From State HWY 371 and Highway 11 in Pequot Lakes, go east approx. One-third mile and then north on Nagel Rd to property. Arrow and signs at the end of northbound Nagel Rd.



Listed By:  
RE/MAX Results - Nisswa

Affinity Real Estate Inc. participates in the Regional Multiple Listing Service of Minnesota, Inc Broker Reciprocity (sm) program, allowing us to display other broker's listings on our website. All properties are subject to prior sale, change or withdrawal.



**Call Affinity Real Estate**

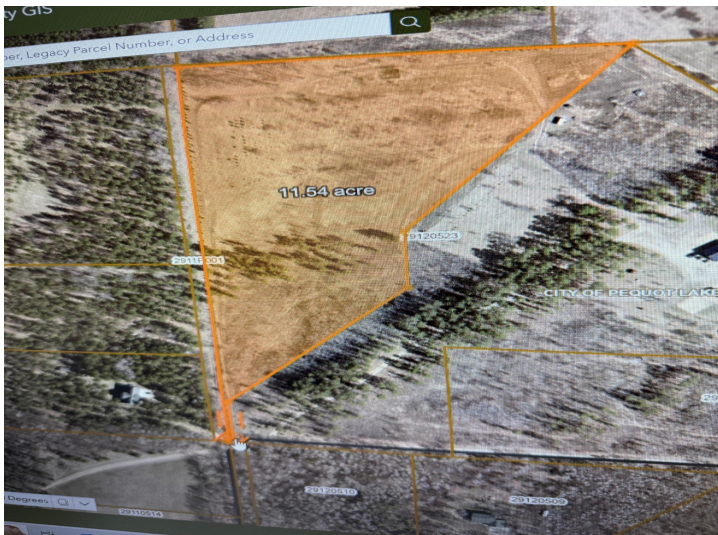
**218-237-3333**

**info@affinityrealestate.com**



**Affinity Real Estate - 600 Park Avenue South - Park Rapids MN 56470**





website: [www.AffinityRealEstate.com](http://www.AffinityRealEstate.com) | email: [info@affinityrealestate.com](mailto:info@affinityrealestate.com) | office: 218-237-3333 | fax: 218-237-3377



**\$214,000**  
 MLS 6725475 Land  
 11.5 Acre Lot Nagel Road  
 Pequot Lakes MN 56472





website: [www.AffinityRealEstate.com](http://www.AffinityRealEstate.com) | email: [info@affinityrealestate.com](mailto:info@affinityrealestate.com) | office: 218-237-3333 | fax: 218-237-3377



**\$214,000**  
 MLS 6725475 Land  
 11.5 Acre Lot Nagel Road  
 Pequot Lakes MN 56472





website: [www.AffinityRealEstate.com](http://www.AffinityRealEstate.com) | email: [info@affinityrealestate.com](mailto:info@affinityrealestate.com) | office: 218-237-3333 | fax: 218-237-3377



**\$214,000**

MLS 6725475 Land  
11.5 Acre Lot Nagel Road  
Pequot Lakes MN 56472