



MLS 6725830 Residential

\$324,900

2,300 sq ft
3 bedrooms
3 baths

868 Park Drive
Detroit Lakes MN 56501

Status: Pending

Description:

Home Sweet Wow, at Willow Springs! Set on nearly half an acre, this beautifully maintained, one-owner rambler style home is ready for you! With 3 bedrooms, 3 bathrooms, and an attached 2-stall garage, this home blends comfort, space, and functionality in all the right ways! The main level features a cozy yet open layout, including a primary suite with a walk-in closet and private beautiful tile $\frac{3}{4}$ bath, a second bedroom, and a full bathroom. Downstairs, the finished lower level boasts an incredible family room, impressive third bedroom, 3rd bathroom, and incredible storage space with laundry – perfect for staying organized without sacrificing style. Enjoy peaceful mornings and quiet evenings on the back deck, surrounded by mature trees and visiting wildlife, or sip coffee on the charming front patio. Winning features in this home include — a spacious entry to impress, stainless steel appliances, low-maintenance vinyl siding, natural gas forced air furnace, and central air. Convenience meets charm— close to town, nearby scenic pathway, and no gravel roads to worry about! Why wait, this Willow Springs wonder is ready for you!

Additional Details:

Year Built	2000
Lot Acres	0.46
Lot Dimensions	100x224x111x174
Garage Stalls	2
School District	22
Taxes	\$2,514
Taxes with Assessments	\$2,594
Tax Year	2025

Additional Features:

Fuel: Natural Gas **Heat:** Forced Air

Driving Directions:

From Detroit Lakes, Head north on Washington Ave toward Holmes St W. Turn NW onto US-10 W. Turn NE onto US-59 N. Turn E onto Willow Springs Rd. Turn NW onto Park Dr.



Listed By:
Keller Williams Realty Profess

Affinity Real Estate Inc. participates in the Regional Multiple Listing Service of Minnesota, Inc Broker Reciprocity (sm) program, allowing us to display other broker's listings on our website. All properties are subject to prior sale, change or withdrawal.



Call Affinity Real Estate

218-237-3333

info@affinityrealestate.com



Affinity Real Estate - 600 Park Avenue South - Park Rapids MN 56470



website: www.AffinityRealEstate.com | email: info@affinityrealestate.com | office: 218-237-3333 | fax: 218-237-3377



\$324,900
 MLS 6725830 Residential
 868 Park Drive
 Detroit Lakes MN 56501



website: www.AffinityRealEstate.com | email: info@affinityrealestate.com | office: 218-237-3333 | fax: 218-237-3377

Affinity
REAL ESTATE INC

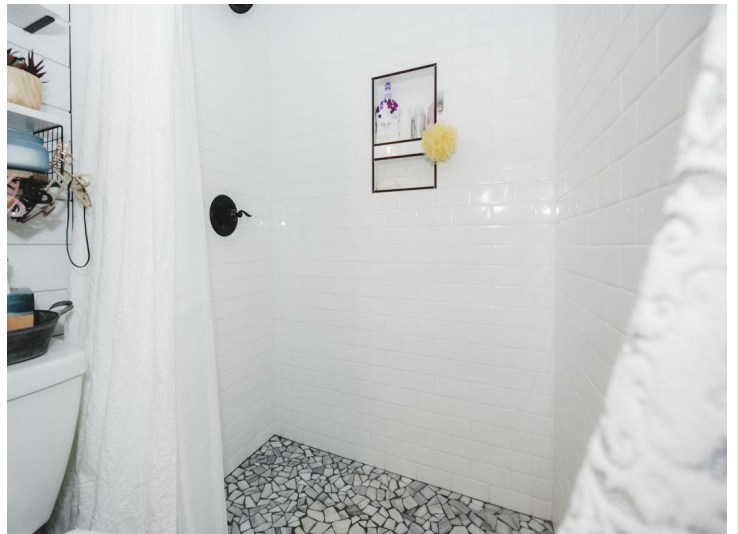
\$324,900
MLS 6725830 Residential
868 Park Drive
Detroit Lakes MN 56501



website: www.AffinityRealEstate.com | email: info@affinityrealestate.com | office: 218-237-3333 | fax: 218-237-3377



\$324,900
 MLS 6725830 Residential
 868 Park Drive
 Detroit Lakes MN 56501



website: www.AffinityRealEstate.com | email: info@affinityrealestate.com | office: 218-237-3333 | fax: 218-237-3377



\$324,900
 MLS 6725830 Residential
 868 Park Drive
 Detroit Lakes MN 56501



website: www.AffinityRealEstate.com | email: info@affinityrealestate.com | office: 218-237-3333 | fax: 218-237-3377

Affinity
REAL ESTATE INC

\$324,900
MLS 6725830 Residential
868 Park Drive
Detroit Lakes MN 56501



website: www.AffinityRealEstate.com | email: info@affinityrealestate.com | office: 218-237-3333 | fax: 218-237-3377

Affinity
REAL ESTATE INC

\$324,900
MLS 6725830 Residential
868 Park Drive
Detroit Lakes MN 56501



website: www.AffinityRealEstate.com | email: info@affinityrealestate.com | office: 218-237-3333 | fax: 218-237-3377

Affinity
REAL ESTATE INC

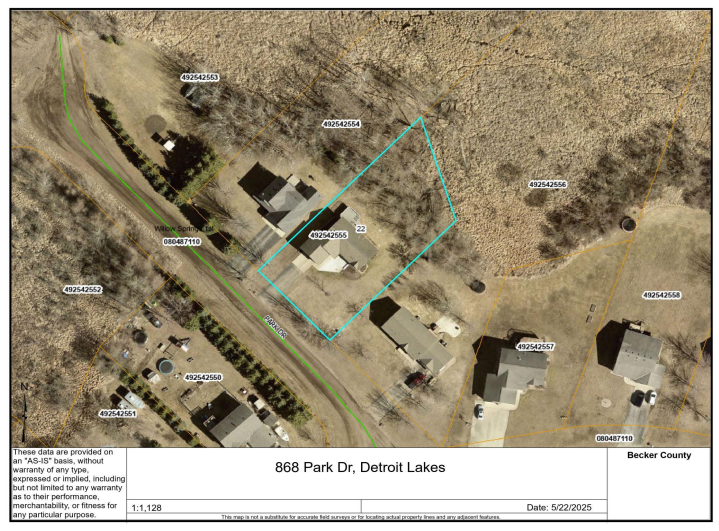
\$324,900
MLS 6725830 Residential
868 Park Drive
Detroit Lakes MN 56501



website: www.AffinityRealEstate.com | email: info@affinityrealestate.com | office: 218-237-3333 | fax: 218-237-3377



\$324,900
MLS 6725830 Residential
868 Park Drive
Detroit Lakes MN 56501



Affinity
REAL ESTATE INC.

Page 10 of 10