



MLS 6726086 Lake Land

\$325,000

Description:

Leech Lake Lot – Rare Opportunity!

This is the kind of lot that doesn't come around often. 1.8 acres of level ground with 100 feet of solid rock and sand shoreline—ideal for swimming, boating, or just enjoying the view. Mature trees provide privacy and shade, and the property has already been surveyed and staked. Easy access, great location, and ready for you to break ground. Whether you're building a weekend retreat or your forever lake home, this lot is a strong start.

Additional Details:

Lot Acres	1.8
Lot Dimensions	100x207x569x138x631x302
School District	115
Taxes	\$1,028
Taxes with Assessments	\$1,028
Tax Year	2025

Additional Features:

Driving Directions:

From Walker N. on 371 to Oak Pt. Rd. Follow Oak Pt to a Left on E. Oak Pt Rd. Follow to a Left on Campers Landing Rd NW. Look for directional signs.



Listed By:
Cedar Point Realty -Walker

Affinity Real Estate Inc. participates in the Regional Multiple Listing Service of Minnesota, Inc Broker Reciprocity (sm) program, allowing us to display other broker's listings on our website. All properties are subject to prior sale, change or withdrawal.



Call Affinity Real Estate

218-237-3333

info@affinityrealestate.com



Affinity Real Estate - 600 Park Avenue South - Park Rapids MN 56470

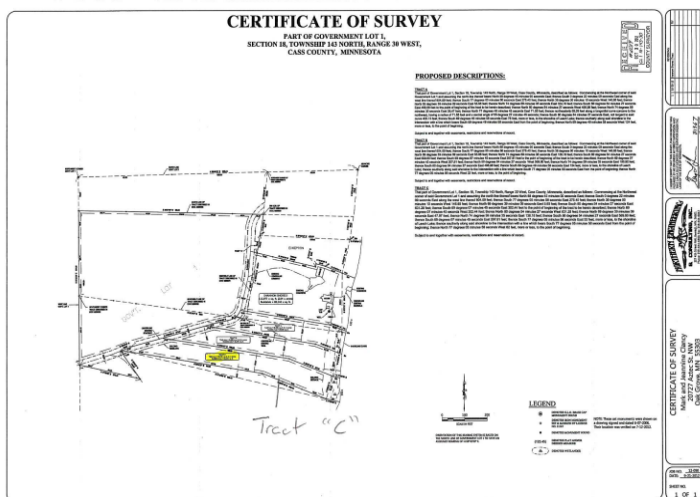
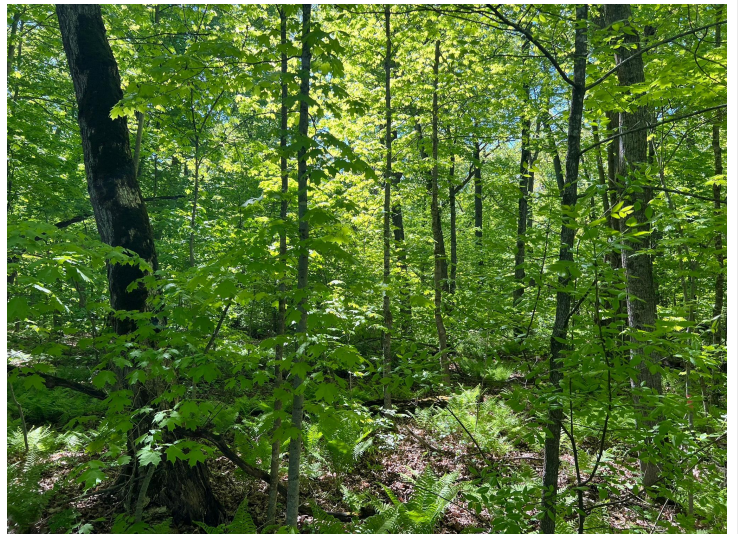


website: www.AffinityRealEstate.com | email: info@affinityrealestate.com | office: 218-237-3333 | fax: 218-237-3377



\$325,000

MLS 6726086 Lake Land
TBD Camper Landing Road
Cass Lake MN 56633



website: www.AffinityRealEstate.com | email: info@affinityrealestate.com | office: 218-237-3333 | fax: 218-237-3377

Affinity
REAL ESTATE INC

\$325,000
MLS 6726086 Lake Land
TBD Camper Landing Road
Cass Lake MN 56633