



MLS 6726111 Lake Home

\$799,900

1,326 sq ft
5 bedrooms
3 baths

18241 Rocky Shores
Crosby MN 56441

Waterfront: Adney

Status: Active

Description:

Rare opportunity to own a one-of-a-kind lakefront retreat on the tranquil shores of Lake Adney in Crosby, MN. Situated on 1.53 acres with 79 feet of shoreline, this private waterfront estate includes three unique living spaces: a main cabin, a guest cabin, and a lodge-style entertainment building—perfect for those seeking a cabin compound, a vacation rental setup, or a private Up North getaway.


The main chalet-style cabin offers 2 bedrooms plus a loft sleeping area, a wood-burning fireplace, vaulted ceilings, and floor-to-ceiling windows overlooking Lake Adney. Reclaimed barnwood floors and updated finishes add warmth and character. The guest cabin features a full kitchen, bathroom, and bunk-style sleeping area with beautiful vaulted tongue-and-groove ceilings. Ideal for hosting, co-ownership, or short-term rental flexibility.

The Lodge is a stunning space for entertaining or relaxing, complete with a high-end kitchen featuring Wolf appliances, a massive stone fireplace, a spacious open-concept layout, a game room area, and an upper-level loft-style bedroom. The property also includes three full kitchens, three bathrooms, a large 3-season porch, a new lakeside deck, brand new windows, a new Navien boiler, new water heater and a metal roof.

Located on the peaceful west side of Lake Adney for beautiful sunrise views, and only minutes from Crosby, Crosslake, and Emily. This multi-structure lake property blends luxury, rustic charm, and investment potential. Don't miss your chance to own a legacy lakefront compound in the Brainerd Lakes area.

Additional Details:

Year Built	1995
Lot Acres	1.53
Lot Dimensions	79x864x75x854
Garage Stalls	1
School District	182
Taxes	\$4,008
Taxes with Assessments	\$4,008
Tax Year	2024



Listed By:
eXp Realty

Fuel: Propane **Heat:** Fireplace(s), Radiant Floor, Radiator(s)

Service of Minnesota, Inc Broker Reciprocity (sm) program, allowing us to display other broker's listings on our website. All properties are from the state of Minnesota.

Driving Directions: From State Highway 6, Turn East onto County Rd 36, Turn Left on County Rd 114, Turn Right onto Green Lake Rd, Turn Left onto W Adney Lane, Turn Left onto Rocky Shores and follow to the end.



Call Affinity Real Estate

218-237-3333

info@affinityrealestate.com



Affinity Real Estate - 600 Park Avenue South - Park Rapids MN 56470



website: www.AffinityRealEstate.com | email: info@affinityrealestate.com | office: 218-237-3333 | fax: 218-237-3377

Affinity
REAL ESTATE INC

\$799,900
MLS 6726111 Lake Home
18241 Rocky Shores
Crosby MN 56441



website: www.AffinityRealEstate.com | email: info@affinityrealestate.com | office: 218-237-3333 | fax: 218-237-3377

Affinity
REAL ESTATE INC

\$799,900
MLS 6726111 Lake Home
18241 Rocky Shores
Crosby MN 56441



website: www.AffinityRealEstate.com | email: info@affinityrealestate.com | office: 218-237-3333 | fax: 218-237-3377

Affinity
REAL ESTATE INC

\$799,900
MLS 6726111 Lake Home
18241 Rocky Shores
Crosby MN 56441



website: www.AffinityRealEstate.com | email: info@affinityrealestate.com | office: 218-237-3333 | fax: 218-237-3377

Affinity
REAL ESTATE INC

\$799,900
MLS 6726111 Lake Home
18241 Rocky Shores
Crosby MN 56441



website: www.AffinityRealEstate.com | email: info@affinityrealestate.com | office: 218-237-3333 | fax: 218-237-3377



\$799,900
 MLS 6726111 Lake Home
 18241 Rocky Shores
 Crosby MN 56441



website: www.AffinityRealEstate.com | email: info@affinityrealestate.com | office: 218-237-3333 | fax: 218-237-3377

Affinity
REAL ESTATE INC

\$799,900
MLS 6726111 Lake Home
18241 Rocky Shores
Crosby MN 56441



website: www.AffinityRealEstate.com | email: info@affinityrealestate.com | office: 218-237-3333 | fax: 218-237-3377

Affinity
REAL ESTATE INC

\$799,900
MLS 6726111 Lake Home
18241 Rocky Shores
Crosby MN 56441



website: www.AffinityRealEstate.com | email: info@affinityrealestate.com | office: 218-237-3333 | fax: 218-237-3377



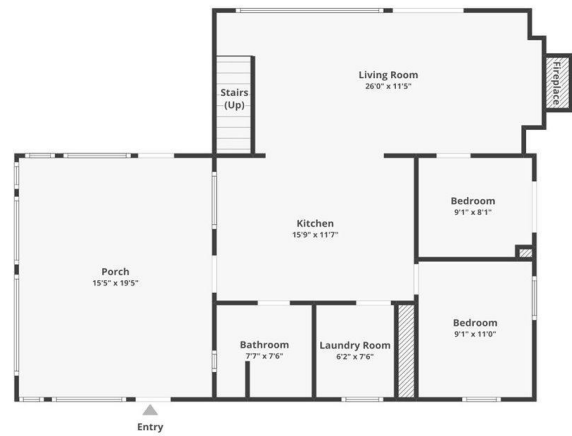
\$799,900
 MLS 6726111 Lake Home
 18241 Rocky Shores
 Crosby MN 56441



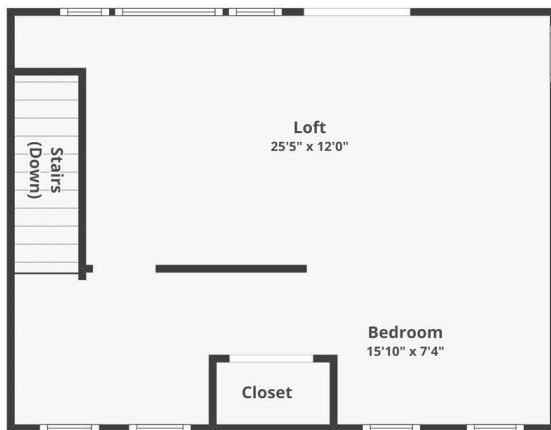
website: www.AffinityRealEstate.com | email: info@affinityrealestate.com | office: 218-237-3333 | fax: 218-237-3377

Affinity
REAL ESTATE INC

\$799,900
MLS 6726111 Lake Home
18241 Rocky Shores
Crosby MN 56441



Floor plan/section cannot be used for building or design purposes. Sizes and dimensions are approximate.



Floor plan/section cannot be used for building or design purposes. Sizes and dimensions are approximate.



FLOOR 1



FLOOR 2

Floor plan/section cannot be used for building or design purposes. Sizes and dimensions are approximate.

website: www.AffinityRealEstate.com | email: info@affinityrealestate.com | office: 218-237-3333 | fax: 218-237-3377

Affinity
REAL ESTATE INC

\$799,900
MLS 6726111 Lake Home
18241 Rocky Shores
Crosby MN 56441