



MLS 6726141 Residential

**\$189,995**

964 sq ft  
2 bedrooms  
1 baths

24061 US 71  
Park Rapids MN 56470

Status: Active

#### Description:

This move-in ready home is located in the bullseye of everything recreational. 1000's of acres of public land, the Potato Lake public access, snowmobile and OHV trails! It's all here. This maintenance free home just underwent a total and thoughtful 2025 transformation. The only components remaining from its former version are the stud walls and the poured concrete foundation. Otherwise this is effectively new construction where everything is new. Features convenient one level living with 2 bedrooms, a full bath, large living room, mudroom and a bonus room with laundry which could double as an office. The kitchen has custom cabinets by SWI with soft closures and stainless appliances. All of the rooms are nicely sized and benefit from tons of natural light. 200 amp electrical service, septic, well, furnace, central air, water heater and spray foam insulation are also brand new. Composite decking and a poured sidewalk finish it off nicely. Sits on nearly 3 acres just north of Park Rapids.

#### Additional Details:

Year Built	1936
Lot Acres	2.91
Lot Dimensions	547 x irr
School District	309
Taxes	\$493
Taxes with Assessments	\$714
Tax Year	2025

#### Additional Features:

**Basement:** Concrete, Storage Space, Unfinished **Fuel:** Propane **Heat:** Forced Air **Sewer:** Private Sewer, Septic System Compliant - Yes, Tank with Drainage Field **Water:** Drilled, Private, Well **Air Conditioning:** Central Air

#### Driving Directions:

From Hwy 71/34: Go North on 71 just past CR 40 to property on your left.



Listed By:  
Affinity Real Estate Inc.

Affinity Real Estate Inc. participates in the Regional Multiple Listing Service of Minnesota, Inc Broker Reciprocity (sm) program, allowing us to display other broker's listings on our website. All properties are subject to prior sale, change or withdrawal.



Call Affinity Real Estate

**218-237-3333**

[info@affinityrealestate.com](mailto:info@affinityrealestate.com)



Affinity Real Estate - 600 Park Avenue South - Park Rapids MN 56470





website: [www.AffinityRealEstate.com](http://www.AffinityRealEstate.com) | email: [info@affinityrealestate.com](mailto:info@affinityrealestate.com) | office: 218-237-3333 | fax: 218-237-3377



**\$189,995**  
 MLS 6726141 Residential  
 24061 US 71  
 Park Rapids MN 56470





website: [www.AffinityRealEstate.com](http://www.AffinityRealEstate.com) | email: [info@affinityrealestate.com](mailto:info@affinityrealestate.com) | office: 218-237-3333 | fax: 218-237-3377



**\$189,995**  
 MLS 6726141 Residential  
 24061 US 71  
 Park Rapids MN 56470

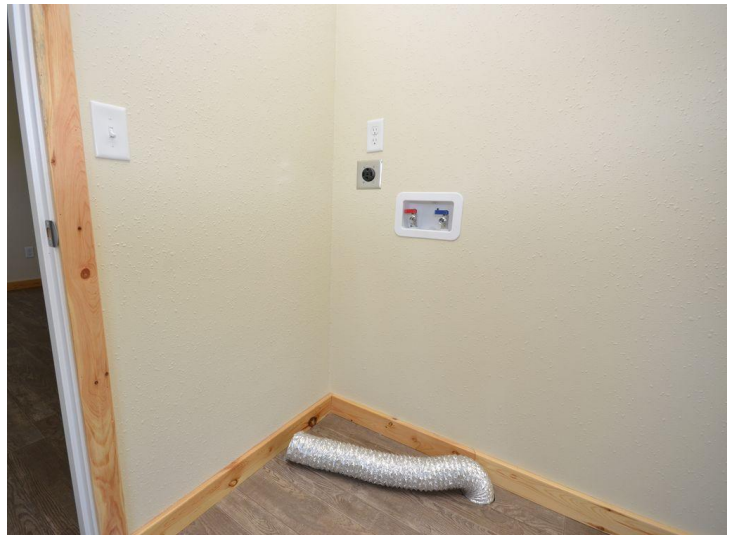




website: [www.AffinityRealEstate.com](http://www.AffinityRealEstate.com) | email: [info@affinityrealestate.com](mailto:info@affinityrealestate.com) | office: 218-237-3333 | fax: 218-237-3377



**\$189,995**  
MLS 6726141 Residential  
24061 US 71  
Park Rapids MN 56470



website: [www.AffinityRealEstate.com](http://www.AffinityRealEstate.com) | email: [info@affinityrealestate.com](mailto:info@affinityrealestate.com) | office: 218-237-3333 | fax: 218-237-3377



**\$189,995**  
 MLS 6726141 Residential  
 24061 US 71  
 Park Rapids MN 56470





website: [www.AffinityRealEstate.com](http://www.AffinityRealEstate.com) | email: [info@affinityrealestate.com](mailto:info@affinityrealestate.com) | office: 218-237-3333 | fax: 218-237-3377



**\$189,995**  
 MLS 6726141 Residential  
 24061 US 71  
 Park Rapids MN 56470