



MLS 6726224 Lake Home

**\$349,900**

956 sq ft  
1 bedrooms  
2 baths

23403 Ivory Drive  
Nevis MN 56467

Waterfront: West Crooked

Status: Pending

#### Description:

**\*Spectacular View!\*** Discover your perfect getaway with this stunning cabin featuring spectacular south-facing views over West Crooked Lake. The open floor plan creates an inviting atmosphere, ideal for family gatherings or peaceful relaxation. This property includes a detached two-car garage with living quarters, providing extra space for guests or hobbies. Nestled in a prime location, you're just moments away from Paul Bunyan State Forest, which boasts seemingly endless hiking trails, ATV paths, snowmobile trails, and abundant opportunities for hunting and recreation. Don't miss the chance to own this slice of paradise—schedule your private showing today and experience lakefront living at its best!

#### Additional Details:

Year Built	2006
Lot Acres	5.14
Lot Dimensions	232x527x612x251x670x382
Garage Stalls	2
School District	308
Taxes	\$1,827
Taxes with Assessments	\$2,048
Tax Year	2025

#### Additional Features:

**Fuel:** Electric **Heat:** Space Heater

#### Driving Directions:

Head east on MN-34 E/1st St W/Lake Country Scenic Bywy toward Park Ave S ,5.2 mi, Turn left onto MN-226 N, 1.5 mi, Continue onto Co Hwy 7/County 7, 9.2 mi ,Sharp right onto Co Hwy 2/Co Rd 2/County 2 ,1.9 mi  
Turn right onto Ivory Dr



Listed By:  
Wolff & Simon Real Estate

Affinity Real Estate Inc. participates in the Regional Multiple Listing Service of Minnesota, Inc Broker Reciprocity (sm) program, allowing us to display other broker's listings on our website. All properties are subject to prior sale, change or withdrawal.



**Call Affinity Real Estate**

**218-237-3333**

**info@affinityrealestate.com**



**Affinity Real Estate - 600 Park Avenue South - Park Rapids MN 56470**





website: [www.AffinityRealEstate.com](http://www.AffinityRealEstate.com) | email: [info@affinityrealestate.com](mailto:info@affinityrealestate.com) | office: 218-237-3333 | fax: 218-237-3377



**\$349,900**  
MLS 6726224 Lake Home  
23403 Ivory Drive  
Nevis MN 56467





website: [www.AffinityRealEstate.com](http://www.AffinityRealEstate.com) | email: [info@affinityrealestate.com](mailto:info@affinityrealestate.com) | office: 218-237-3333 | fax: 218-237-3377



**\$349,900**  
 MLS 6726224 Lake Home  
 23403 Ivory Drive  
 Nevis MN 56467





website: [www.AffinityRealEstate.com](http://www.AffinityRealEstate.com) | email: [info@affinityrealestate.com](mailto:info@affinityrealestate.com) | office: 218-237-3333 | fax: 218-237-3377

**Affinity**  
REAL ESTATE INC

**\$349,900**  
MLS 6726224 Lake Home  
23403 Ivory Drive  
Nevis MN 56467



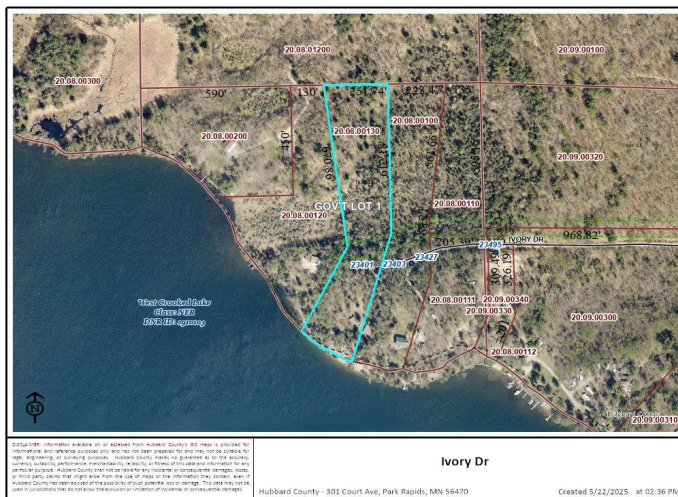
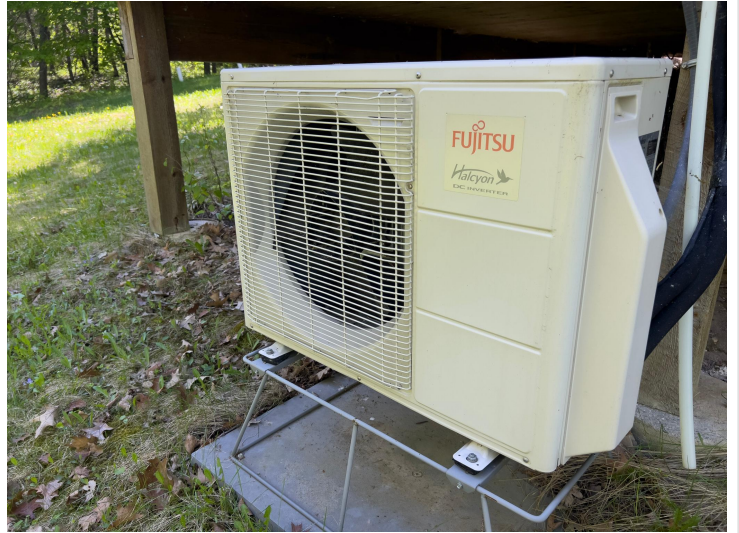


website: [www.AffinityRealEstate.com](http://www.AffinityRealEstate.com) | email: [info@affinityrealestate.com](mailto:info@affinityrealestate.com) | office: 218-237-3333 | fax: 218-237-3377



**\$349,900**  
MLS 6726224 Lake Home  
23403 Ivory Drive  
Nevis MN 56467





website: [www.AffinityRealEstate.com](http://www.AffinityRealEstate.com) | email: [info@affinityrealestate.com](mailto:info@affinityrealestate.com) | office: 218-237-3333 | fax: 218-237-3377



**\$349,900**  
 MLS 6726224 Lake Home  
 23403 Ivory Drive  
 Nevis MN 56467