



MLS 6726532 Lake Land

**\$36,000**

#### Description:

Discover the perfect blend of privacy, recreation, and natural beauty with this 3.8-acre property, ideally situated at the end of a quiet dead-end road. Comprised of two parcels, this unique acreage borders hundreds of acres of public land to the south, offering direct access for hunting, hiking, or just enjoying the woods. Nestled in the heart of National Forest and lake country, it's a dream location for anyone who enjoys riding side-by-sides, snowmobiling, hiking, or hunting. With miles of trails and roads just steps from your door, adventure is always within reach. Despite its peaceful seclusion, the property is only about 10 minutes from the amenities of Longville, providing convenience without trading off solitude. As an added bonus, you'll enjoy 189 feet of shared shoreline on the scenic County Lake-perfect for kayaking, canoeing, or just enjoying a bonfire by the shore. Whether you're seeking a weekend escape or a year-round building site, this property offers the ideal setting for your up-north lifestyle.

#### Additional Details:

Lot Acres	3.8
Lot Dimensions	737x436 x irr
School District	118
Taxes	\$124
Taxes with Assessments	\$124
Tax Year	2025

#### Additional Features:

#### Driving Directions:

From Longville north on 84, east on 200, south on Eagle Claw Drive NE, follow to end of road.



Listed By:  
Bill Hansen Realty/Longville

Affinity Real Estate Inc. participates in the Regional Multiple Listing Service of Minnesota, Inc Broker Reciprocity (sm) program, allowing us to display other broker's listings on our website. All properties are subject to prior sale, change or withdrawal.



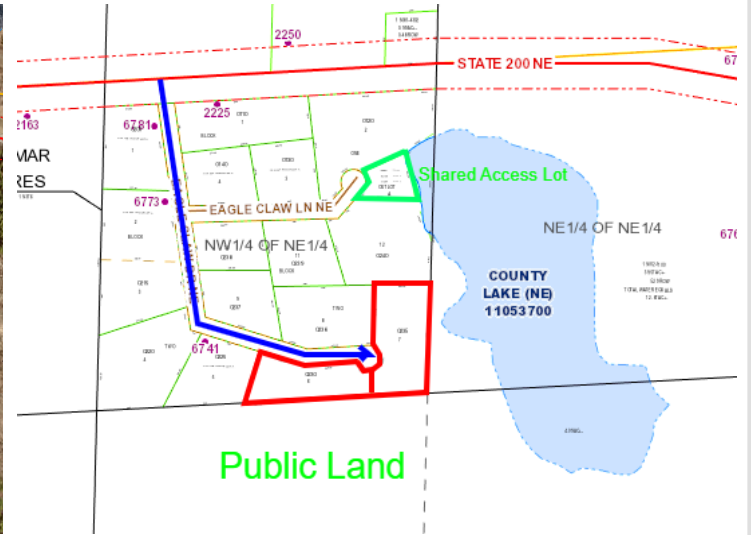
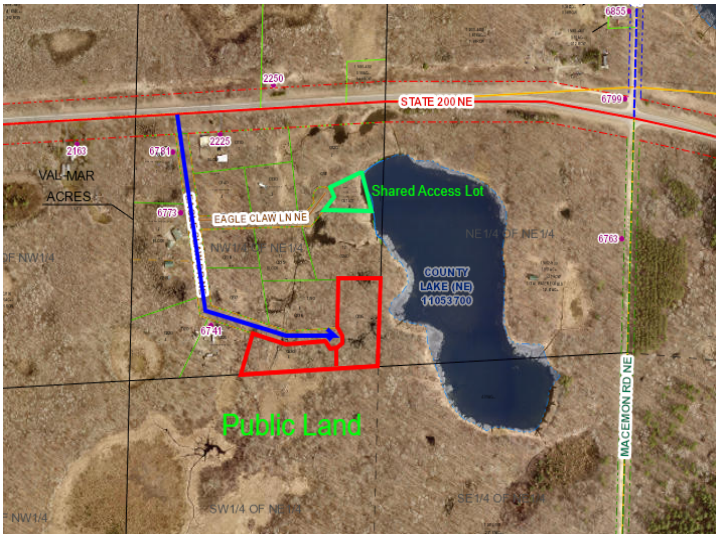
Call Affinity Real Estate

**218-237-3333**

[info@affinityrealestate.com](mailto:info@affinityrealestate.com)



Affinity Real Estate - 600 Park Avenue South - Park Rapids MN 56470



website: [www.AffinityRealEstate.com](http://www.AffinityRealEstate.com) | email: [info@affinityrealestate.com](mailto:info@affinityrealestate.com) | office: 218-237-3333 | fax: 218-237-3377



**\$36,000**

MLS 6726532 Lake Land  
TBD Eagle Claw Drive NE  
Remer MN 56672