

MLS 6726599 Lake Land

\$349,900

Description:

Show stopper on Eagle Lake. Unparalleled views with 286ft of hard sand shoreline and nearly 2 acres of land. Site prep, storage shed, septic, drilled well and electric already on site. Steps to the water are in and the dock is included. The private beach area is awesome! Bring the RV or take advantage of construction season as this opportunity is build ready. Eagle lake is over 900 acres, has incredible water clarity and is known for its exotic blue color. This is truly a special place and one of the last available lots on this coveted lake. Additional photos and full listing details will be added soon.

Additional Details:

Lot Acres	1.84
Lot Dimensions	1.84 acres
School District	542
Taxes	\$1,824
Taxes with Assessments	\$1,874
Tax Year	2025

Additional Features:

Driving Directions:

From Battle Lake, south on 78 for 7.5 miles to property on East (left). Shared approach - go to the left.



Listed By:
Affinity Real Estate Inc.

Affinity Real Estate Inc. participates in the Regional Multiple Listing Service of Minnesota, Inc Broker Reciprocity (sm) program, allowing us to display other broker's listings on our website. All properties are subject to prior sale, change or withdrawal.



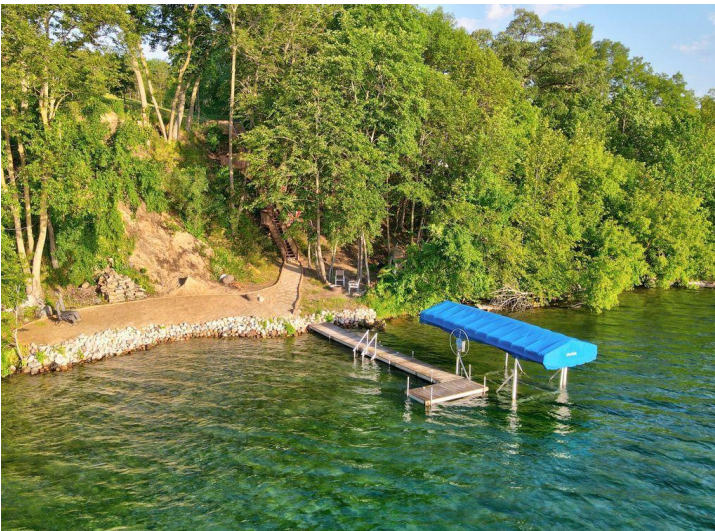
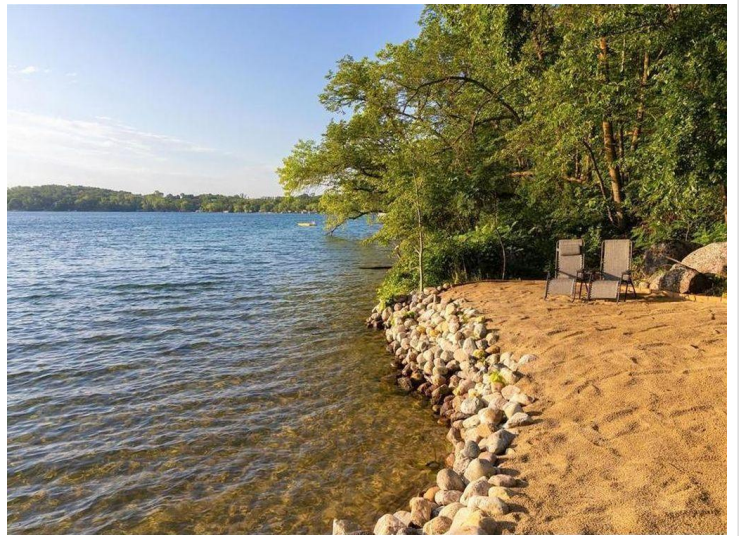
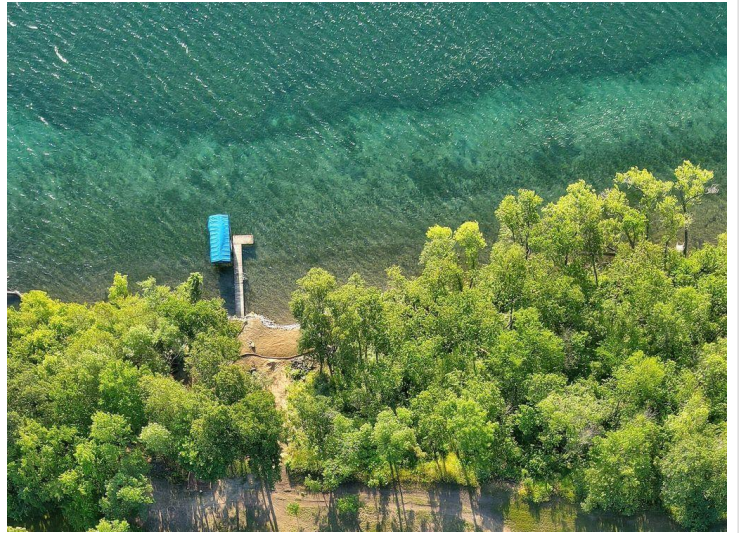
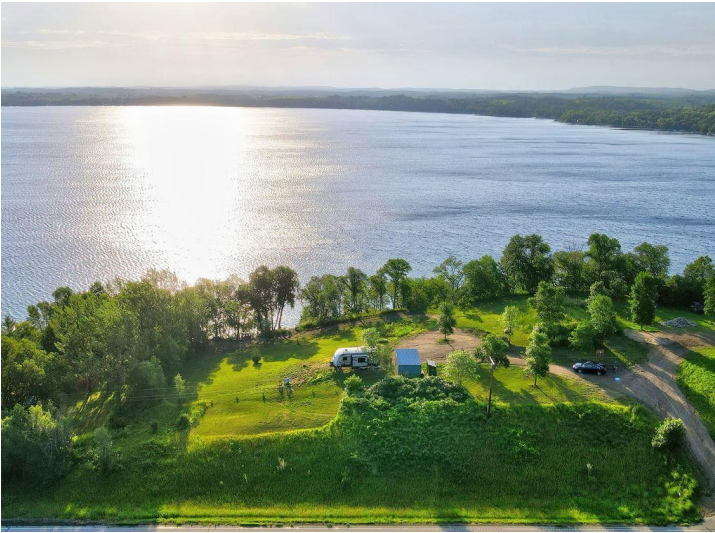
Call Affinity Real Estate

218-237-3333

info@affinityrealestate.com



Affinity Real Estate - 600 Park Avenue South - Park Rapids MN 56470



website: www.AffinityRealEstate.com | email: info@affinityrealestate.com | office: 218-237-3333 | fax: 218-237-3377

Affinity
REAL ESTATE INC

\$349,900
MLS 6726599 Lake Land
14072 State Highway 78
Battle Lake MN 56515