



MLS 6726687 Residential

\$199,900

1,847 sq ft
1 bedrooms
1 baths

11302 Norway Drive
Laporte MN 56461

Status: Pending

Description:

Country Home! This charming 1-bedroom, 1-bath boasts a detached 16 x 24 garage and an expansive 30 x 48 pole building, perfect for all your hobbies and storage needs. Nestled on 16.2 acres of beautifully fenced land, the property features meandering riding trails for your outdoor adventures. Just minutes away, you'll find the breathtaking Itasca State Park and the enchanting Paul Bunyan State Forest, alongside some of the finest fishing lakes the North Country has to offer. Call for an appointment today!

Additional Details:

Year Built	2003
Lot Acres	16.2
Lot Dimensions	540x1320x540x1320
Garage Stalls	4
School District	309
Taxes	\$1,181
Taxes with Assessments	\$1,402
Tax Year	2025

Additional Features:

Basement: None **Fuel:** Propane **Garage:** 4 **Heat:** Forced Air **Sewer:** Private Sewer **Water:** Drilled **Air Conditioning:** Wall Unit(s)

Driving Directions:

From Park Rapids Highway 71/34 head North on Highway 34 approximately 15 miles to Norway Drive, then head North on Norway drive to the property.



Listed By:
Wolff & Simon Real Estate

Affinity Real Estate Inc. participates in the Regional Multiple Listing Service of Minnesota, Inc Broker Reciprocity (sm) program, allowing us to display other broker's listings on our website. All properties are subject to prior sale, change or withdrawal.



Call Affinity Real Estate

218-237-3333

info@affinityrealestate.com



Affinity Real Estate - 600 Park Avenue South - Park Rapids MN 56470



website: www.AffinityRealEstate.com | email: info@affinityrealestate.com | office: 218-237-3333 | fax: 218-237-3377

Affinity
REAL ESTATE INC

\$199,900
MLS 6726687 Residential
11302 Norway Drive
Laporte MN 56461



website: www.AffinityRealEstate.com | email: info@affinityrealestate.com | office: 218-237-3333 | fax: 218-237-3377

Affinity
REAL ESTATE INC

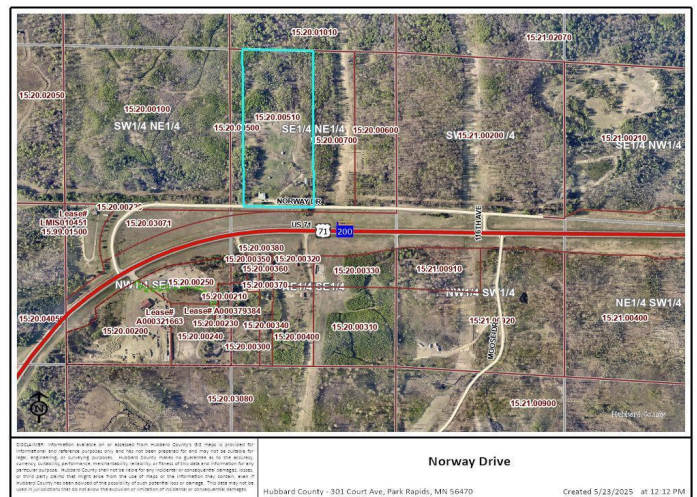
\$199,900
MLS 6726687 Residential
11302 Norway Drive
Laporte MN 56461



website: www.AffinityRealEstate.com | email: info@affinityrealestate.com | office: 218-237-3333 | fax: 218-237-3377



\$199,900
MLS 6726687 Residential
11302 Norway Drive
Laporte MN 56461



website: www.AffinityRealEstate.com | email: info@affinityrealestate.com | office: 218-237-3333 | fax: 218-237-3377

Affinity
REAL ESTATE INC

\$199,900
MLS 6726687 Residential
11302 Norway Drive
Laporte MN 56461