



MLS 6726697 Residential

**\$389,000**

3,264 sq ft  
5 bedrooms  
3 baths

21824 County Highway 20  
Detroit Lakes MN 56501

Status: Active

**Description:**

Tucked into the trees between the Pelican and Cormorant lakes area, you'll find this 5 bedroom 3 bathroom house and over 6 acres!!! Do not miss this opportunity! 2 stall attached garage plus detached additional stall. Detached also includes chicken coop and chickens if you'd like! With two decks, a fenced in area, a large garden space, trees and wildlife, this beautiful property is set up for you to enjoy both indoors and out! Great location for access to Pelican Rapids, Detroit Lakes and Vergas. Inside the house, you'll find 3 living/family rooms, one on each floor, amazing storage and beautiful views in every direction!

**Additional Details:**

Year Built	1917
Lot Acres	6.13
Lot Dimensions	IRR
Garage Stalls	3
School District	548
Taxes	\$1,368
Taxes with Assessments	\$1,368
Tax Year	2024

**Additional Features:**

**Basement:** Partially Finished **Fuel:** Propane **Garage:** 3 **Heat:** Forced Air **Sewer:** Private Sewer **Water:** Well **Air Conditioning:** Window Unit(s)

**Driving Directions:**

From hwy 59, go W on Co Rd 20.



Listed By:  
Re/Max Lakes Region

Affinity Real Estate Inc. participates in the Regional Multiple Listing Service of Minnesota, Inc Broker Reciprocity (sm) program, allowing us to display other broker's listings on our website. All properties are subject to prior sale, change or withdrawal.



**Call Affinity Real Estate**

**218-237-3333**

**info@affinityrealestate.com**



**Affinity Real Estate - 600 Park Avenue South - Park Rapids MN 56470**





website: [www.AffinityRealEstate.com](http://www.AffinityRealEstate.com) | email: [info@affinityrealestate.com](mailto:info@affinityrealestate.com) | office: 218-237-3333 | fax: 218-237-3377



**\$389,000**  
 MLS 6726697 Residential  
 21824 County Highway 20  
 Detroit Lakes MN 56501





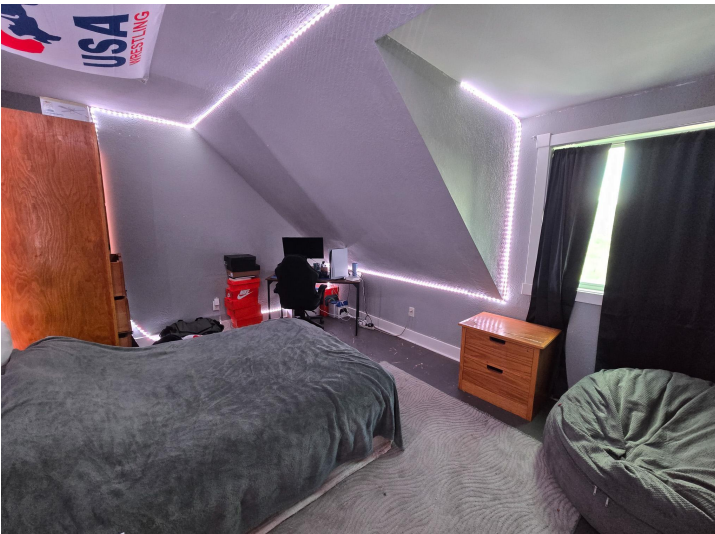
website: [www.AffinityRealEstate.com](http://www.AffinityRealEstate.com) | email: [info@affinityrealestate.com](mailto:info@affinityrealestate.com) | office: 218-237-3333 | fax: 218-237-3377

**Affinity**  
REAL ESTATE INC

**\$389,000**

MLS 6726697 Residential  
21824 County Highway 20  
Detroit Lakes MN 56501





website: [www.AffinityRealEstate.com](http://www.AffinityRealEstate.com) | email: [info@affinityrealestate.com](mailto:info@affinityrealestate.com) | office: 218-237-3333 | fax: 218-237-3377



**\$389,000**  
 MLS 6726697 Residential  
 21824 County Highway 20  
 Detroit Lakes MN 56501





website: [www.AffinityRealEstate.com](http://www.AffinityRealEstate.com) | email: [info@affinityrealestate.com](mailto:info@affinityrealestate.com) | office: 218-237-3333 | fax: 218-237-3377



**\$389,000**  
 MLS 6726697 Residential  
 21824 County Highway 20  
 Detroit Lakes MN 56501





website: [www.AffinityRealEstate.com](http://www.AffinityRealEstate.com) | email: [info@affinityrealestate.com](mailto:info@affinityrealestate.com) | office: 218-237-3333 | fax: 218-237-3377



**\$389,000**  
 MLS 6726697 Residential  
 21824 County Highway 20  
 Detroit Lakes MN 56501