



MLS 6726805 Residential

\$355,000

2,496 sq ft
4 bedrooms
2 baths

11332 Jackpine Road
Bemidji MN 56601

Status: Pending

Description:

Looking for peace, quiet and privacy? Found it right here where you can have country living on 9+acres west of Bemidji overlooking Grant Creek. The land surrounds a clean well-cared for, split level home with 4 bedrooms. Lots of storage and nicely sized rooms throughout. Outside has a beautiful deck/patio area and a large fenced area perfect for chickens and/or a garden. There is both large 2 car attached garage and detached heated garage/workshop. Available for quick close.

Additional Details:

Year Built	1982
Lot Acres	9.98
Lot Dimensions	480x1320
Garage Stalls	3
School District	31
Taxes	\$3,352
Taxes with Assessments	\$3,352
Tax Year	2025

Additional Features:

Basement: Block, Daylight/Lookout Windows, Egress Window(s), Finished, Full, Walkout **Fuel:** Electric, Propane, Wood **Garage:** 3 **Heat:** Dual, Forced Air, Fireplace(s) **Sewer:** Private Sewer **Water:** Private **Air Conditioning:** Central Air

Driving Directions:

From Bemidji, Hwy 2 West, North on HWY 89, left (west) on Jackpine to 11332



Listed By:
RE/MAX Results - Nisswa

Affinity Real Estate Inc. participates in the Regional Multiple Listing Service of Minnesota, Inc Broker Reciprocity (sm) program, allowing us to display other broker's listings on our website. All properties are subject to prior sale, change or withdrawal.



Call Affinity Real Estate

218-237-3333

info@affinityrealestate.com



Affinity Real Estate - 600 Park Avenue South - Park Rapids MN 56470



website: www.AffinityRealEstate.com | email: info@affinityrealestate.com | office: 218-237-3333 | fax: 218-237-3377

Affinity
REAL ESTATE INC

\$355,000
MLS 6726805 Residential
11332 Jackpine Road
Bemidji MN 56601



website: www.AffinityRealEstate.com | email: info@affinityrealestate.com | office: 218-237-3333 | fax: 218-237-3377



\$355,000
 MLS 6726805 Residential
 11332 Jackpine Road
 Bemidji MN 56601



website: www.AffinityRealEstate.com | email: info@affinityrealestate.com | office: 218-237-3333 | fax: 218-237-3377

Affinity
REAL ESTATE INC

\$355,000
MLS 6726805 Residential
11332 Jackpine Road
Bemidji MN 56601



website: www.AffinityRealEstate.com | email: info@affinityrealestate.com | office: 218-237-3333 | fax: 218-237-3377

Affinity
REAL ESTATE INC

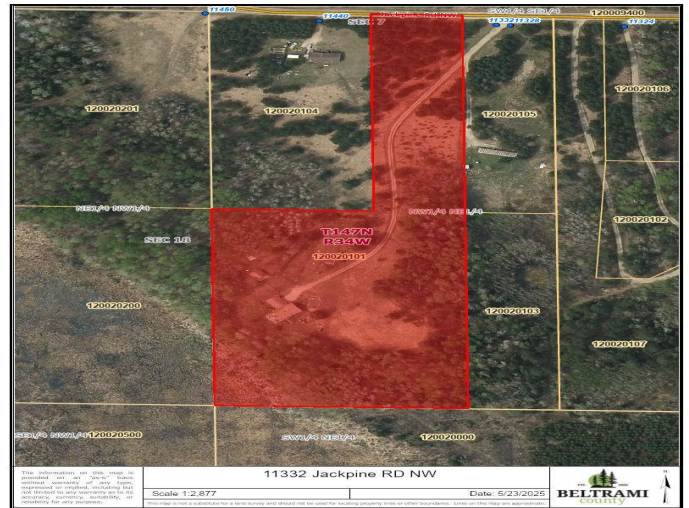
\$355,000
MLS 6726805 Residential
11332 Jackpine Road
Bemidji MN 56601



website: www.AffinityRealEstate.com | email: info@affinityrealestate.com | office: 218-237-3333 | fax: 218-237-3377

Affinity
REAL ESTATE INC

\$355,000
MLS 6726805 Residential
11332 Jackpine Road
Bemidji MN 56601



website: www.AffinityRealEstate.com | email: info@affinityrealestate.com | office: 218-237-3333 | fax: 218-237-3377



\$355,000
MLS 6726805 Residential
11332 Jackpine Road
Bemidji MN 56601