



MLS 6727194 Residential

\$395,000

1,962 sq ft
3 bedrooms
2 baths

10696 Leaf River Road
Wadena MN 56482

Status: Active

Description:

Amazing 4 bedroom 2 bath home that has been meticulously taken care of. Ideal location just on the edge of Wadena situated on just under 20 acres. Fabulous one level living at its best. Nice open concept home with well-designed ample storage. Enjoy the tranquil yard along with the natural wildlife. Gorgeous back yard decks. A back 24 x 24 garage along with 24 x 12 lean makes for an excellent heated workshop. Bring the toys as well because the 40 x 40 pole building will give you plenty of room. Home and buildings just received new roofing materials. Paradise on the edge of town. Make it your own !! Drone pictures to be added soon.

Additional Details:

Year Built	2006
Lot Acres	19.27
Lot Dimensions	irregular
Garage Stalls	2
School District	2155
Taxes	\$3,336
Taxes with Assessments	\$3,336
Tax Year	2025

Additional Features:

Basement: Crawl Space **Fuel:** Propane **Garage:** 2 **Heat:** Forced Air, Heat Pump **Sewer:** Private Sewer, Septic System Compliant - Yes
Water: Drilled **Air Conditioning:** Central Air

Driving Directions:

From Hwy 10 west take 2nd st nw turns into leaf river road.



Listed By:
Hinkle Realty

Affinity Real Estate Inc. participates in the Regional Multiple Listing Service of Minnesota, Inc Broker Reciprocity (sm) program, allowing us to display other broker's listings on our website. All properties are subject to prior sale, change or withdrawal.



Call Affinity Real Estate

218-237-3333

info@affinityrealestate.com



Affinity Real Estate - 600 Park Avenue South - Park Rapids MN 56470



website: www.AffinityRealEstate.com | email: info@affinityrealestate.com | office: 218-237-3333 | fax: 218-237-3377

Affinity
REAL ESTATE INC

\$395,000
MLS 6727194 Residential
10696 Leaf River Road
Wadena MN 56482



website: www.AffinityRealEstate.com | email: info@affinityrealestate.com | office: 218-237-3333 | fax: 218-237-3377



\$395,000
 MLS 6727194 Residential
 10696 Leaf River Road
 Wadena MN 56482



website: www.AffinityRealEstate.com | email: info@affinityrealestate.com | office: 218-237-3333 | fax: 218-237-3377

Affinity
REAL ESTATE INC

\$395,000
MLS 6727194 Residential
10696 Leaf River Road
Wadena MN 56482



website: www.AffinityRealEstate.com | email: info@affinityrealestate.com | office: 218-237-3333 | fax: 218-237-3377

Affinity
REAL ESTATE INC

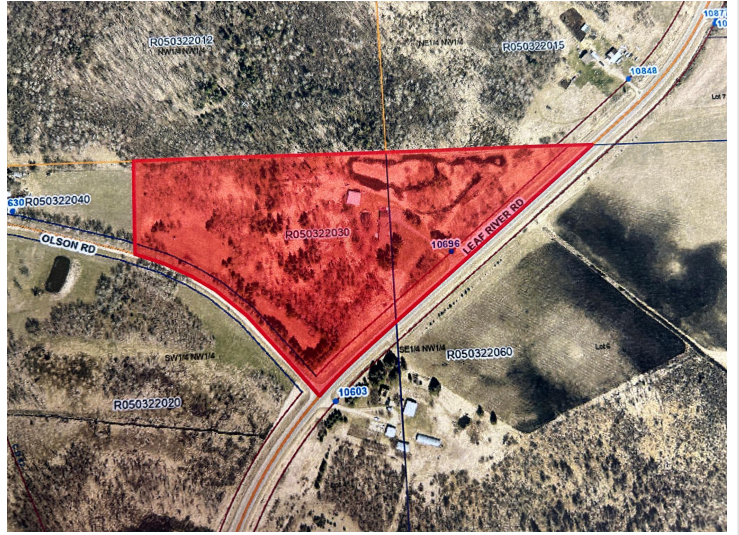
\$395,000
MLS 6727194 Residential
10696 Leaf River Road
Wadena MN 56482



website: www.AffinityRealEstate.com | email: info@affinityrealestate.com | office: 218-237-3333 | fax: 218-237-3377

Affinity
REAL ESTATE INC

\$395,000
MLS 6727194 Residential
10696 Leaf River Road
Wadena MN 56482



website: www.AffinityRealEstate.com | email: info@affinityrealestate.com | office: 218-237-3333 | fax: 218-237-3377



\$395,000
MLS 6727194 Residential
10696 Leaf River Road
Wadena MN 56482