



MLS 6727211 Lake Land

**\$244,900**

**Description:**

Last available building sites in the East Shore Landing development, which offers luxury townhomes on the Whitefish Chain. You build to the association specifications on the exterior and make it your own on the interior! This is a fantastic opportunity to stay on the chain and have a maintenance free environment offering amenities including a shared beach, an outdoor swimming pool and a boat slip for owners all a short walk or golf cart ride to everything Crosslake offers!

**Additional Details:**

Lot Acres	0.07
Lot Dimensions	80x78
School District	186
Taxes	\$400
Taxes with Assessments	\$400
Tax Year	2024

**Additional Features:**

**Driving Directions:**

County Road 3 to a left on East Shore Terrace to a right to the sign and two vacant lots



Listed By:  
Northland Sotheby's International Realty

Affinity Real Estate Inc. participates in the Regional Multiple Listing Service of Minnesota, Inc Broker Reciprocity (sm) program, allowing us to display other broker's listings on our website. All properties are subject to prior sale, change or withdrawal.



**Call Affinity Real Estate**

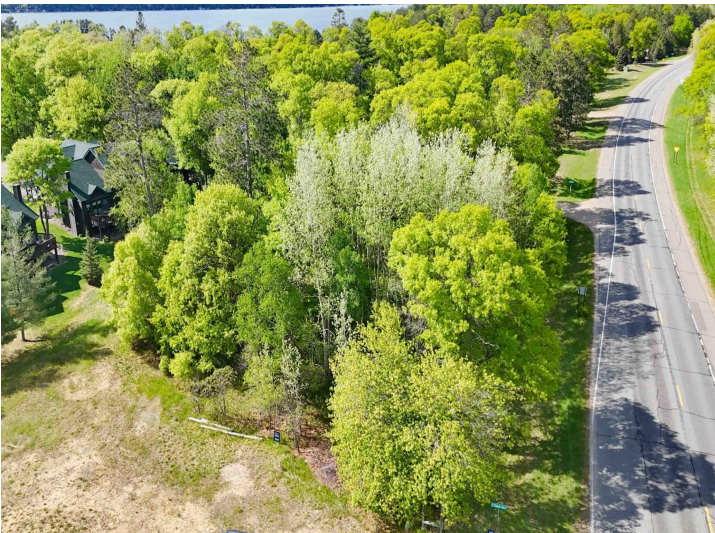
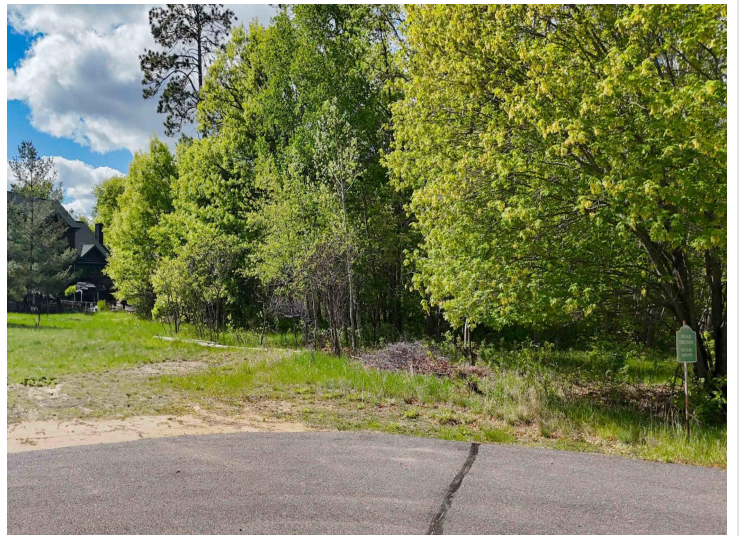
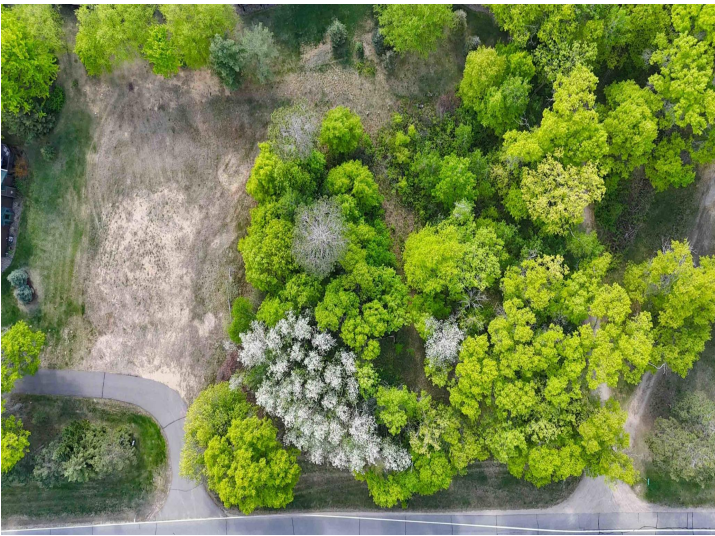
**218-237-3333**

**[info@affinityrealestate.com](mailto:info@affinityrealestate.com)**



**Affinity Real Estate - 600 Park Avenue South - Park Rapids MN 56470**



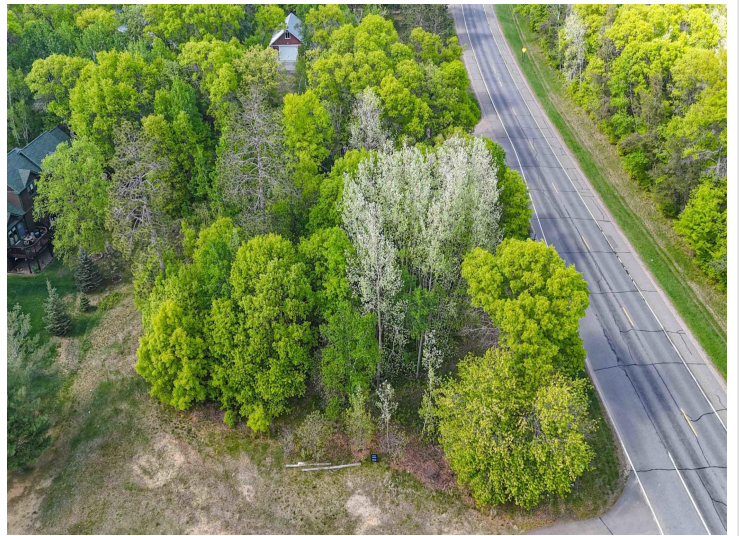
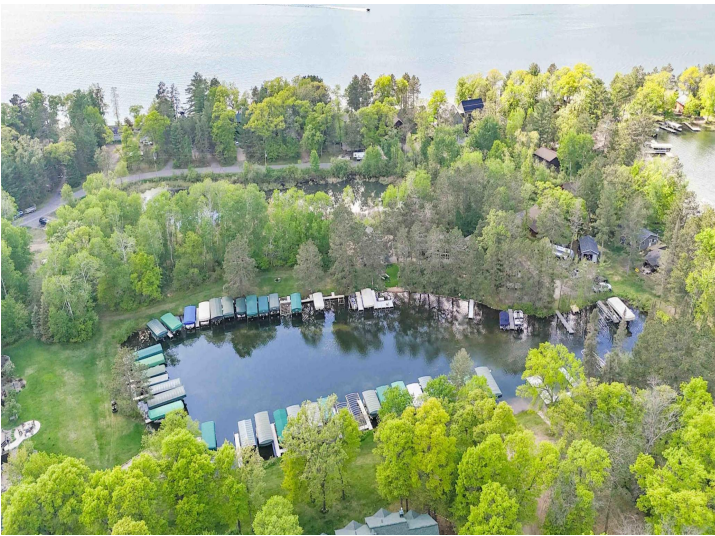
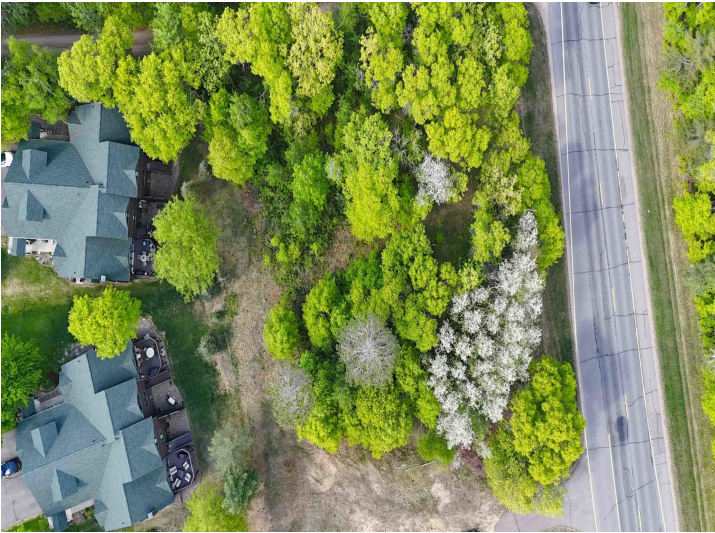


website: [www.AffinityRealEstate.com](http://www.AffinityRealEstate.com) | email: [info@affinityrealestate.com](mailto:info@affinityrealestate.com) | office: 218-237-3333 | fax: 218-237-3377



**\$244,900**  
 MLS 6727211 Lake Land  
 TBD E Shore Terrace  
 Crosslake MN 56442





website: [www.AffinityRealEstate.com](http://www.AffinityRealEstate.com) | email: [info@affinityrealestate.com](mailto:info@affinityrealestate.com) | office: 218-237-3333 | fax: 218-237-3377



**\$244,900**  
 MLS 6727211 Lake Land  
 TBD E Shore Terrace  
 Crosslake MN 56442