



MLS 6727369 Residential

\$268,000

1,324 sq ft
2 bedrooms
1 baths

2501 Woodridge Lane
Brainerd MN 56401

Status: Active

Description:

Enjoy easy, one-level living in this beautifully updated home in a well-maintained association—no more snow removal or lawn care! This home features new vinyl flooring throughout, paint, a new furnace in 2023, and a bright, inviting four-season porch. You'll love the private, fenced-in patio and the added privacy with extra space between neighbors on one side. Convenient layout, low-maintenance lifestyle, and great community living—this is the perfect place to call home!

Additional Details:

Year Built	1999
Lot Acres	0.06
Lot Dimensions	40x70
Garage Stalls	2
School District	181
Taxes	\$2,371
Taxes with Assessments	\$2,371
Tax Year	2025

Additional Features:

Basement: None **Fuel:** Natural Gas **Garage:** 2 **Heat:** Forced Air **Sewer:** City Sewer/Connected **Water:** City Water/Connected **Air Conditioning:** Central Air

Driving Directions:

Business 371 South to right on Buffalo Hills Road to Southview Court to Woodridge Lane.



Listed By:
Central MN Realty LLC

Affinity Real Estate Inc. participates in the Regional Multiple Listing Service of Minnesota, Inc Broker Reciprocity (sm) program, allowing us to display other broker's listings on our website. All properties are subject to prior sale, change or withdrawal.



Call Affinity Real Estate

218-237-3333

info@affinityrealestate.com



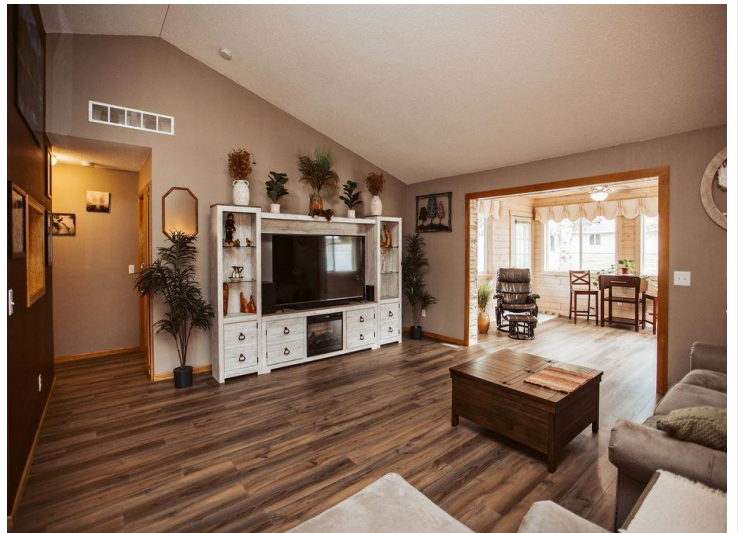
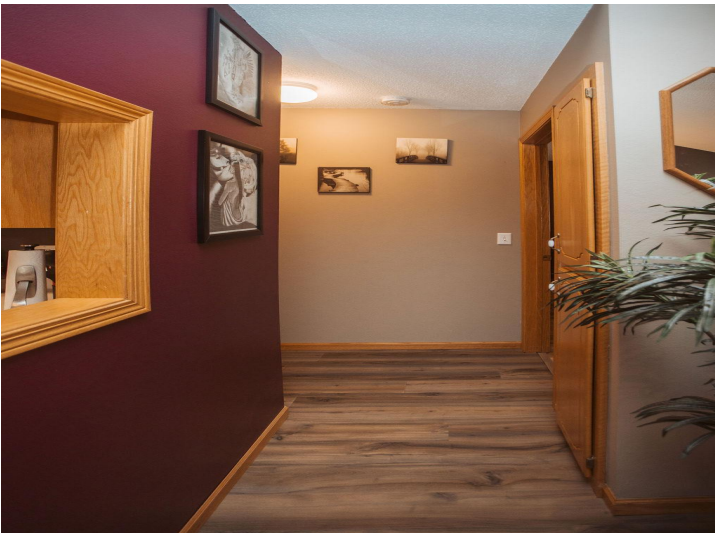
Affinity Real Estate - 600 Park Avenue South - Park Rapids MN 56470



website: www.AffinityRealEstate.com | email: info@affinityrealestate.com | office: 218-237-3333 | fax: 218-237-3377

Affinity
REAL ESTATE INC

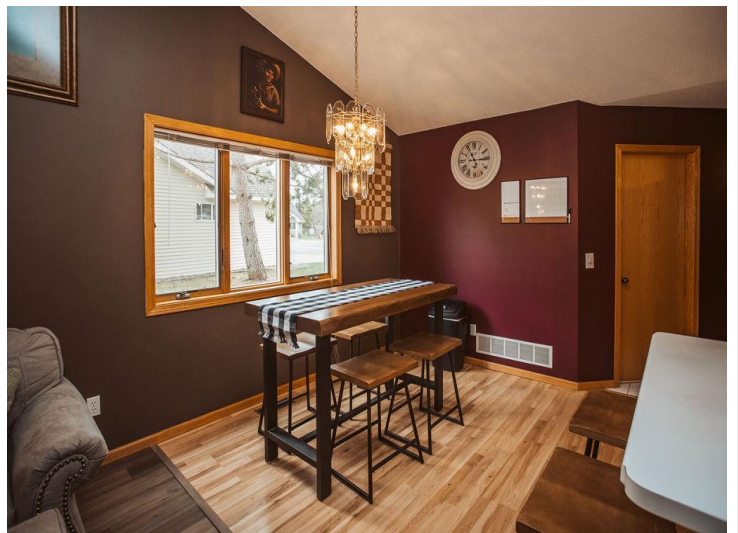
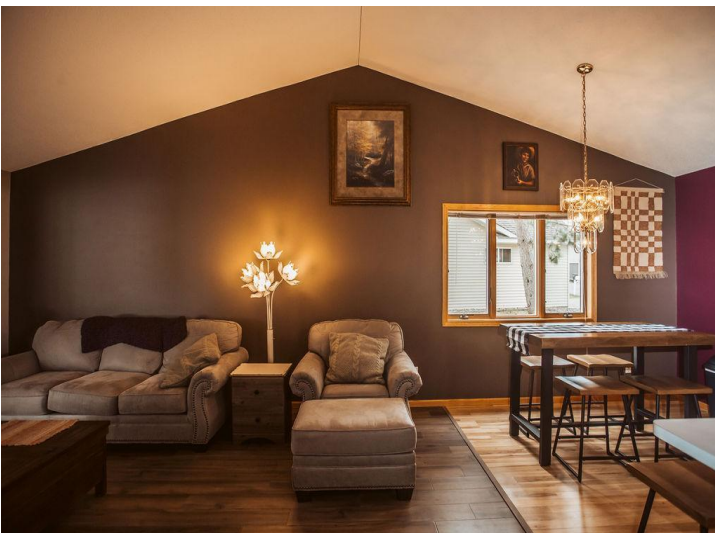
\$268,000
MLS 6727369 Residential
2501 Woodridge Lane
Brainerd MN 56401



website: www.AffinityRealEstate.com | email: info@affinityrealestate.com | office: 218-237-3333 | fax: 218-237-3377

Affinity
REAL ESTATE INC

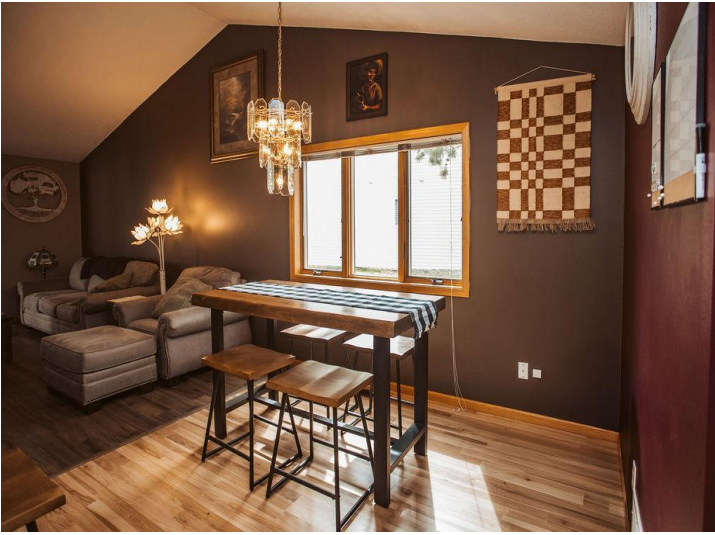
\$268,000
MLS 6727369 Residential
2501 Woodridge Lane
Brainerd MN 56401



website: www.AffinityRealEstate.com | email: info@affinityrealestate.com | office: 218-237-3333 | fax: 218-237-3377

Affinity
REAL ESTATE INC

\$268,000
MLS 6727369 Residential
2501 Woodridge Lane
Brainerd MN 56401



website: www.AffinityRealEstate.com | email: info@affinityrealestate.com | office: 218-237-3333 | fax: 218-237-3377

Affinity
REAL ESTATE INC

\$268,000
MLS 6727369 Residential
2501 Woodridge Lane
Brainerd MN 56401



website: www.AffinityRealEstate.com | email: info@affinityrealestate.com | office: 218-237-3333 | fax: 218-237-3377



\$268,000
MLS 6727369 Residential
2501 Woodridge Lane
Brainerd MN 56401