

MLS 6727795 Land

\$139,900

39.9 Acres
Raw Land

TBD* 40th Avenue
Pine River MN 56474

Status: Pending

Description:

PRIME OPEN 40 ACRE PARCEL ON PREDOMINATELY HIGH PASTURE GROUND WITH EASEMENT.

Additional Details:

Lot Acres	39.9
Lot Dimensions	1320x1320
School District	2174
Taxes	\$448
Taxes with Assessments	\$457
Tax Year	2025

Additional Features:

Driving Directions:

FROM PINE RIVER 4 MILES WEST ON COUNTY ROAD 2 TO 40TH AVE. SW, APPROXIMATELY 2 1/2 MILES TO EASEMENT ON THE RIGHT.



Listed By:
Heartland Real Estate

Affinity Real Estate Inc. participates in the Regional Multiple Listing Service of Minnesota, Inc Broker Reciprocity (sm) program, allowing us to display other broker's listings on our website. All properties are subject to prior sale, change or withdrawal.



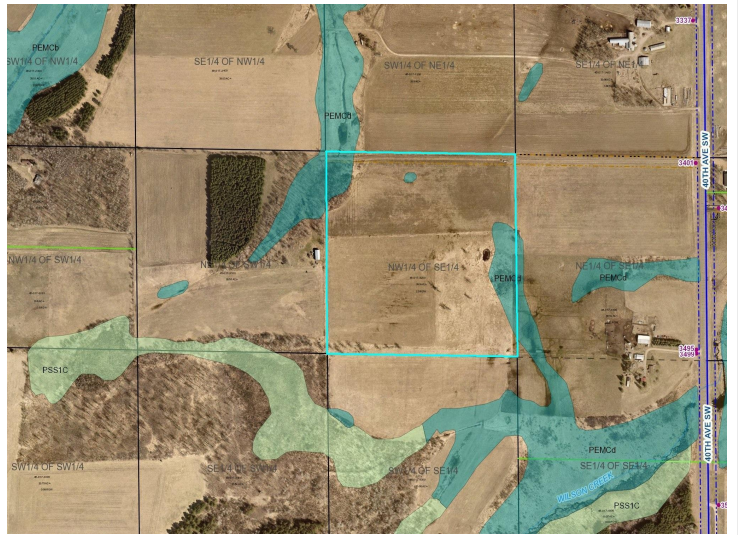
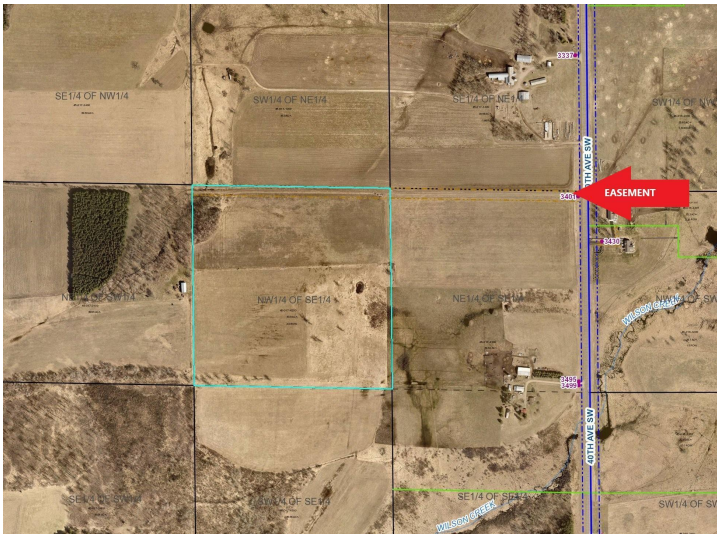
Call Affinity Real Estate

218-237-3333

info@affinityrealestate.com



Affinity Real Estate - 600 Park Avenue South - Park Rapids MN 56470



website: www.AffinityRealEstate.com | email: info@affinityrealestate.com | office: 218-237-3333 | fax: 218-237-3377



\$139,900
 MLS 6727795 Land
 TBD* 40th Avenue
 Pine River MN 56474