



MLS 6727820 Land

**\$150,260**

39.55 Acres  
Raw Land

TBD\* 44th Avenue  
Pine River MN 56474

Status: Pending

#### Description:

PRIME OPEN 40 ACRE PARCEL ON PREDOMINATELY HIGH PASTURE GROUND WITH EASEMENT.

#### Additional Details:

Lot Acres	39.55
Lot Dimensions	1320x1320
School District	2174
Taxes	\$486
Taxes with Assessments	\$496
Tax Year	2025

#### Additional Features:

#### Driving Directions:

FROM PINE RIVER GO 4 MILES WEST ON COUNTY ROAD 2 TO 40TH AVE. SW, SOUTH 2 MILES TO 32ND STREET SW. TURN RIGHT (WEST) 1 MILE TO 44TH AVE. SW, SOUTH 1/4 MILE TO EASEMENT ON RIGHT.



Listed By:  
Heartland Real Estate

Affinity Real Estate Inc. participates in the Regional Multiple Listing Service of Minnesota, Inc Broker Reciprocity (sm) program, allowing us to display other broker's listings on our website. All properties are subject to prior sale, change or withdrawal.



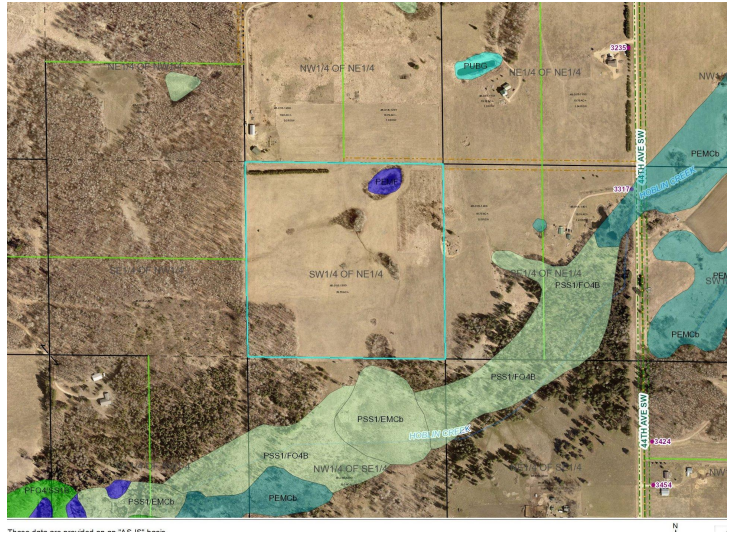
Call Affinity Real Estate

**218-237-3333**

[info@affinityrealestate.com](mailto:info@affinityrealestate.com)



Affinity Real Estate - 600 Park Avenue South - Park Rapids MN 56470



website: [www.AffinityRealEstate.com](http://www.AffinityRealEstate.com) | email: [info@affinityrealestate.com](mailto:info@affinityrealestate.com) | office: 218-237-3333 | fax: 218-237-3377



**\$150,260**  
 MLS 6727820 Land  
 TBD\* 44th Avenue  
 Pine River MN 56474