



MLS 6727843 Residential

\$449,000

1,850 sq ft
3 bedrooms
2 baths

18117 Cherry Creek Lane
Detroit Lakes MN 56501

Status: Active

Description:

Experience luxury living in this completely remodeled home, located just minutes from Detroit Lakes! Nestled on 2.48 acres of mature trees, this one-of-a-kind property offers serene views of Schultz Lake and exceptional outdoor living with multiple areas to enjoy including a custom fire pit and pergola, spacious attached deck, an above ground pool deck, he/she shed, and plenty of space to roam. Inside, the warm open-concept design features heated floors in the kitchen and bathrooms, a beautiful kitchen with granite countertops, maple cabinetry, stainless steel appliances and double oven, and a spacious primary suite featuring a luxurious bath with oversized shower and jetted tub. The inviting living space includes maple hardwood floors, an electric fireplace, and large windows that bring in natural light. Major upgrades in 2019 include a new roof, gutters, and septic system. This unique property combines privacy, style, and functionality in a highly desirable location – truly a must-see!

Additional Details:

Year Built	1979
Lot Acres	2.48
Lot Dimensions	Irregular
Garage Stalls	2
School District	22
Taxes	\$2,192
Taxes with Assessments	\$2,272
Tax Year	2024

Additional Features:

Basement: Block **Fuel:** Propane **Garage:** 2 **Heat:** Dual, Forced Air **Sewer:** Private Sewer, Septic System Compliant - Yes **Water:** Well **Air Conditioning:** Central Air

Driving Directions:



Listed By:
James Patrick Real Estate

Affinity Real Estate Inc. participates in the Regional Multiple Listing Service of Minnesota, Inc Broker Reciprocity (sm) program, allowing us to display other broker's listings on our website. All properties are subject to prior sale, change or withdrawal.



Call Affinity Real Estate

218-237-3333

info@affinityrealestate.com



Affinity Real Estate - 600 Park Avenue South - Park Rapids MN 56470



website: www.AffinityRealEstate.com | email: info@affinityrealestate.com | office: 218-237-3333 | fax: 218-237-3377

Affinity
REAL ESTATE INC

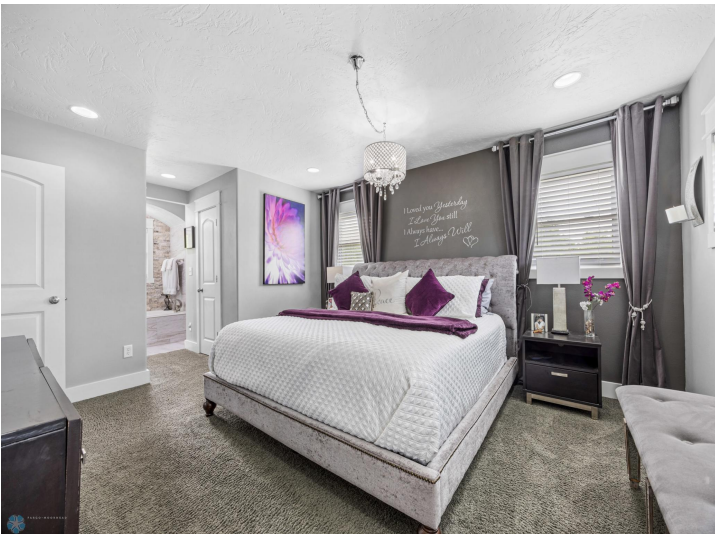
\$449,000
MLS 6727843 Residential
18117 Cherry Creek Lane
Detroit Lakes MN 56501



website: www.AffinityRealEstate.com | email: info@affinityrealestate.com | office: 218-237-3333 | fax: 218-237-3377

Affinity
REAL ESTATE INC

\$449,000
MLS 6727843 Residential
18117 Cherry Creek Lane
Detroit Lakes MN 56501



website: www.AffinityRealEstate.com | email: info@affinityrealestate.com | office: 218-237-3333 | fax: 218-237-3377

Affinity
REAL ESTATE INC

\$449,000
MLS 6727843 Residential
18117 Cherry Creek Lane
Detroit Lakes MN 56501



website: www.AffinityRealEstate.com | email: info@affinityrealestate.com | office: 218-237-3333 | fax: 218-237-3377

Affinity
REAL ESTATE INC

\$449,000
MLS 6727843 Residential
18117 Cherry Creek Lane
Detroit Lakes MN 56501



website: www.AffinityRealEstate.com | email: info@affinityrealestate.com | office: 218-237-3333 | fax: 218-237-3377

Affinity
REAL ESTATE INC

\$449,000
MLS 6727843 Residential
18117 Cherry Creek Lane
Detroit Lakes MN 56501



website: www.AffinityRealEstate.com | email: info@affinityrealestate.com | office: 218-237-3333 | fax: 218-237-3377

Affinity
REAL ESTATE INC

\$449,000
MLS 6727843 Residential
18117 Cherry Creek Lane
Detroit Lakes MN 56501



website: www.AffinityRealEstate.com | email: info@affinityrealestate.com | office: 218-237-3333 | fax: 218-237-3377



\$449,000
 MLS 6727843 Residential
 18117 Cherry Creek Lane
 Detroit Lakes MN 56501



website: www.AffinityRealEstate.com | email: info@affinityrealestate.com | office: 218-237-3333 | fax: 218-237-3377

Affinity
REAL ESTATE INC

\$449,000
MLS 6727843 Residential
18117 Cherry Creek Lane
Detroit Lakes MN 56501



website: www.AffinityRealEstate.com | email: info@affinityrealestate.com | office: 218-237-3333 | fax: 218-237-3377



\$449,000
 MLS 6727843 Residential
 18117 Cherry Creek Lane
 Detroit Lakes MN 56501