



MLS 6727849 Land

**\$39,900**

3.5 Acres  
Raw Land

TBD2 Aurora Drive  
Walker MN 56484

Status: Pending

**Description:**

Don't miss a great opportunity to own 3.5 acres just minutes from Walker. This property offers a mixture of tree species and a beautiful stand of mature pine trees. With Direct access to the Chippewa National Forest you can enjoy recreation out your back door and only a short drive to the Heartland Trail and Leech Lake.

**Additional Details:**

Lot Acres	3.5
Lot Dimensions	329x761x200x657
School District	113
Taxes	\$118
Taxes with Assessments	\$118
Tax Year	2025

**Additional Features:**

**Driving Directions:**

From Walker: Follow Highway 34 West for 3.5 miles, turn Left onto Aurora Dr. and property on Left



Listed By:  
Wolff & Simon Real Estate

Affinity Real Estate Inc. participates in the Regional Multiple Listing Service of Minnesota, Inc Broker Reciprocity (sm) program, allowing us to display other broker's listings on our website. All properties are subject to prior sale, change or withdrawal.



**Call Affinity Real Estate**

**218-237-3333**

**info@affinityrealestate.com**



**Affinity Real Estate - 600 Park Avenue South - Park Rapids MN 56470**



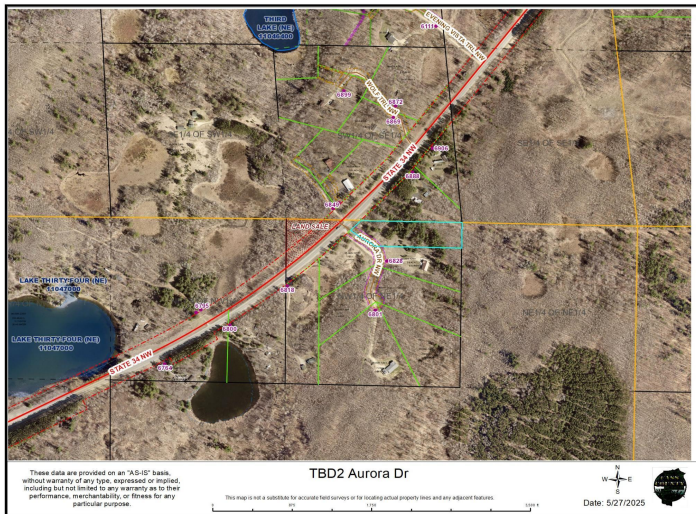


website: [www.AffinityRealEstate.com](http://www.AffinityRealEstate.com) | email: [info@affinityrealestate.com](mailto:info@affinityrealestate.com) | office: 218-237-3333 | fax: 218-237-3377



**\$39,900**  
MLS 6727849 Land  
TBD2 Aurora Drive  
Walker MN 56484





website: [www.AffinityRealEstate.com](http://www.AffinityRealEstate.com) | email: [info@affinityrealestate.com](mailto:info@affinityrealestate.com) | office: 218-237-3333 | fax: 218-237-3377



**\$39,900**  
 MLS 6727849 Land  
 TBD2 Aurora Drive  
 Walker MN 56484