



MLS 6727886 Land

\$29,900

3.2 Acres
Raw Land

TBD1 Aurora Drive
Walker MN 56484

Status: Active

Description:

Great opportunity to own 3.2 acres just minutes from Walker. This lot offers a mix of trees and open space with plenty options to build a home or shop. Enjoy a short drive to access the Heartland Trail, Chippewa National Forest, or Leech Lake.

Additional Details:

Lot Acres	3.2
Lot Dimensions	350x546x330x319
School District	113
Taxes	\$104
Taxes with Assessments	\$104
Tax Year	2025

Additional Features:

Driving Directions:

From Walker: Follow Highway 34 West for 3.5 miles, turn Left onto Aurora Dr. and property on Right.



Listed By:
Wolff & Simon Real Estate

Affinity Real Estate Inc. participates in the Regional Multiple Listing Service of Minnesota, Inc Broker Reciprocity (sm) program, allowing us to display other broker's listings on our website. All properties are subject to prior sale, change or withdrawal.



Call Affinity Real Estate

218-237-3333

info@affinityrealestate.com



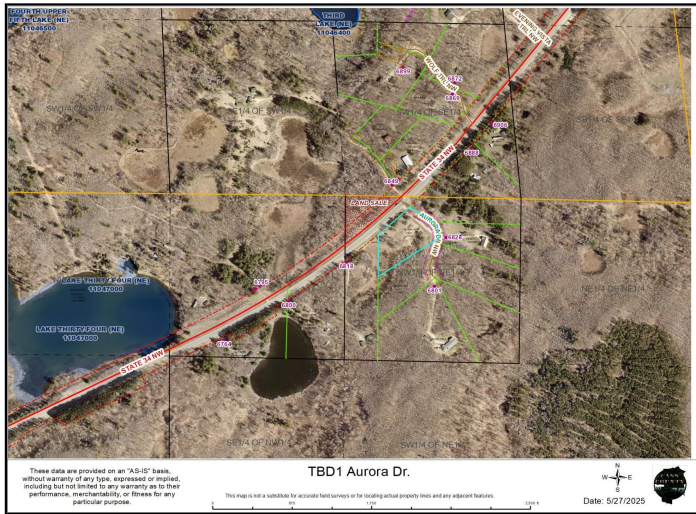
Affinity Real Estate - 600 Park Avenue South - Park Rapids MN 56470



website: www.AffinityRealEstate.com | email: info@affinityrealestate.com | office: 218-237-3333 | fax: 218-237-3377



\$29,900
 MLS 6727886 Land
 TBD1 Aurora Drive
 Walker MN 56484



website: www.AffinityRealEstate.com | email: info@affinityrealestate.com | office: 218-237-3333 | fax: 218-237-3377



\$29,900
 MLS 6727886 Land
 TBD1 Aurora Drive
 Walker MN 56484