



MLS 6727950 Residential

\$249,900

1,296 sq ft
2 bedrooms
1 baths

2155 County Road 55
Remer MN 56672

Status: Active

Description:

Well-maintained 2-bedroom, 1-bath country home on 40 acres of beautiful land near Lake George. Ideal as a peaceful primary residence or a hunting/fishing base camp. The large detached garage includes an insulated workshop, and the spacious machine shed easily accommodates an RV or all your outdoor toys. Enjoy nearby access to hundreds of acres of state land and public hunting grounds. A perfect blend of privacy, nature, and recreational opportunity.

Additional Details:

Year Built	1990
Lot Acres	39.94
Lot Dimensions	1343x1298x1242x1286
Garage Stalls	2
School District	118
Taxes	\$698
Taxes with Assessments	\$764
Tax Year	2025

Additional Features:

Fuel: Propane **Heat:** Forced Air

Driving Directions:

From Crosslake, take Co Rd 3 to Co Rd 1, take left on Lake Washburn Rd NE (2.1 miles), turn right on Co Rd 55, property is on the left side of the road.



Listed By:
eXp Realty

Affinity Real Estate Inc. participates in the Regional Multiple Listing Service of Minnesota, Inc Broker Reciprocity (sm) program, allowing us to display other broker's listings on our website. All properties are subject to prior sale, change or withdrawal.



Call Affinity Real Estate

218-237-3333

info@affinityrealestate.com



Affinity Real Estate - 600 Park Avenue South - Park Rapids MN 56470



website: www.AffinityRealEstate.com | email: info@affinityrealestate.com | office: 218-237-3333 | fax: 218-237-3377

Affinity
REAL ESTATE INC

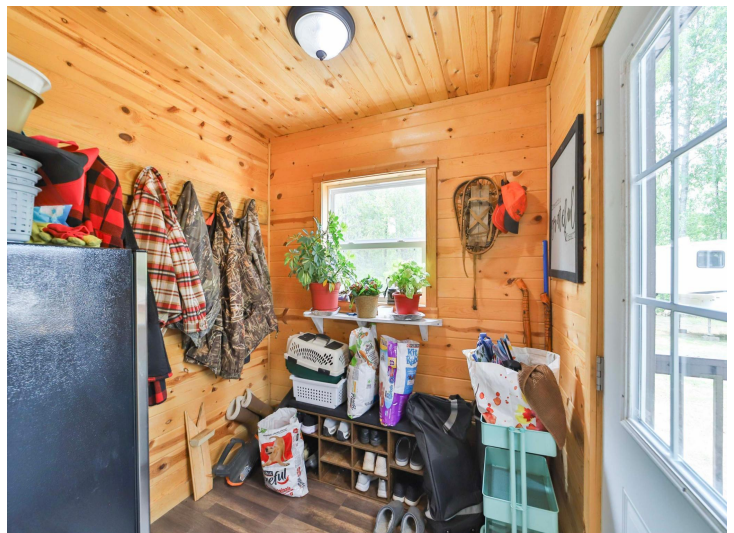
\$249,900
MLS 6727950 Residential
2155 County Road 55
Remer MN 56672



website: www.AffinityRealEstate.com | email: info@affinityrealestate.com | office: 218-237-3333 | fax: 218-237-3377

Affinity
REAL ESTATE INC

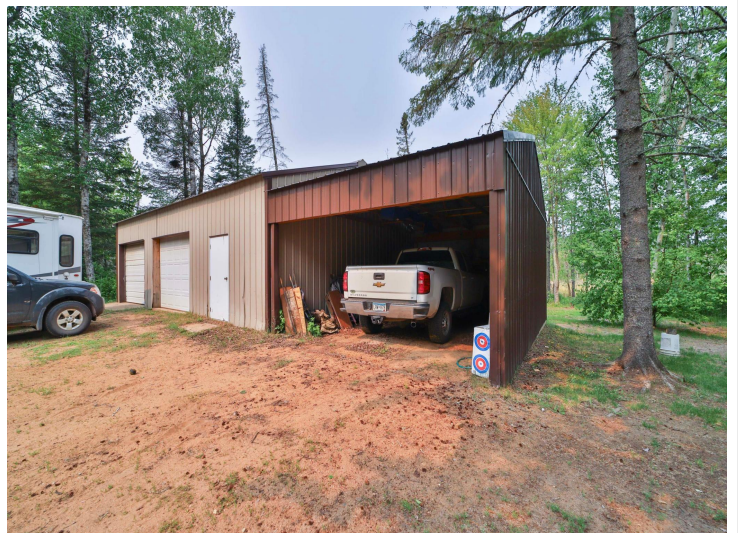
\$249,900
MLS 6727950 Residential
2155 County Road 55
Remer MN 56672



website: www.AffinityRealEstate.com | email: info@affinityrealestate.com | office: 218-237-3333 | fax: 218-237-3377

Affinity
REAL ESTATE INC

\$249,900
MLS 6727950 Residential
2155 County Road 55
Remer MN 56672



website: www.AffinityRealEstate.com | email: info@affinityrealestate.com | office: 218-237-3333 | fax: 218-237-3377

Affinity
REAL ESTATE INC

\$249,900
MLS 6727950 Residential
2155 County Road 55
Remer MN 56672



website: www.AffinityRealEstate.com | email: info@affinityrealestate.com | office: 218-237-3333 | fax: 218-237-3377



\$249,900
 MLS 6727950 Residential
 2155 County Road 55
 Remer MN 56672