



MLS 6728211 Lake Home

\$350,000

1,200 sq ft
2 bedrooms
1 baths

32179 Two Inlets Drive
Park Rapids MN 56470

Waterfront: Two Inlets

Status: Pending

Description:

Looking for a level lot with beautiful sand shoreline? This 2015-built seasonal cabin on Two Inlets Lake offers 145 feet of level frontage and ideal sandy shoreline—perfect for swimming, relaxing, or casting a line. The 2-bedroom, 1-bath cabin is well laid out with easy-maintenance concrete floors and over 450 sq ft of patio space for outdoor entertaining. The attached 1-car garage has been finished into extra living space, and a storage shed adds convenience. Whether you're into fishing, boating, or quiet lakeside mornings, this is a prime location on a highly regarded recreational and fishing lake.

Additional Details:

Year Built	2015
Lot Acres	0.72
Lot Dimensions	.72 acres
Garage Stalls	1
School District	309
Taxes	\$2,034
Taxes with Assessments	\$2,034
Tax Year	2025

Additional Features:

Fuel: Propane **Heat:** None

Driving Directions:

From Park Rapids: North Hwy 71 for 11.2 miles. Left county 41 1.1 mile, continue Cty 44 1.3 mile. Left Cty 50 .6 mile. right Two Inlets Dr .6 mile to property on left.



Listed By:
Gallery of Homes

Affinity Real Estate Inc. participates in the Regional Multiple Listing Service of Minnesota, Inc Broker Reciprocity (sm) program, allowing us to display other broker's listings on our website. All properties are subject to prior sale, change or withdrawal.



Call Affinity Real Estate

218-237-3333

info@affinityrealestate.com



Affinity Real Estate - 600 Park Avenue South - Park Rapids MN 56470



website: www.AffinityRealEstate.com | email: info@affinityrealestate.com | office: 218-237-3333 | fax: 218-237-3377



\$350,000
 MLS 6728211 Lake Home
 32179 Two Inlets Drive
 Park Rapids MN 56470



website: www.AffinityRealEstate.com | email: info@affinityrealestate.com | office: 218-237-3333 | fax: 218-237-3377



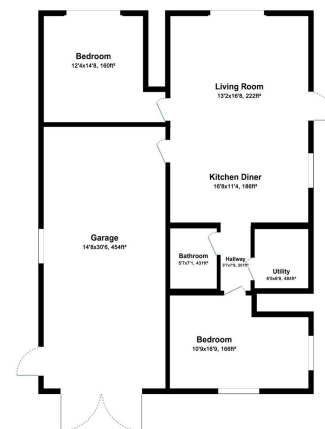
\$350,000
 MLS 6728211 Lake Home
 32179 Two Inlets Drive
 Park Rapids MN 56470



website: www.AffinityRealEstate.com | email: info@affinityrealestate.com | office: 218-237-3333 | fax: 218-237-3377



\$350,000
MLS 6728211 Lake Home
32179 Two Inlets Drive
Park Rapids MN 56470



For illustration purposes only. Not to scale.

Main Floor

website: www.AffinityRealEstate.com | email: info@affinityrealestate.com | office: 218-237-3333 | fax: 218-237-3377



\$350,000
 MLS 6728211 Lake Home
 32179 Two Inlets Drive
 Park Rapids MN 56470