



MLS 6728464 Commercial

**\$149,000**

107 Washington Street  
Brainerd MN 56401

Status: Active

**Description:**

The property includes two rentable units. Currently, one unit is vacant, while the second is occupied by a barber shop, This property has an excellent opportunity for redevelopment or reconfiguration. The vacant space, along with the existing barber shop unit, has potential for significant interior modifications. Walls may be removed or restructured to create a more open and versatile layout—subject to evaluation and approval by a licensed contractor.

**Additional Details:**

Year Built	1980
Lot Acres	0.08
Lot Dimensions	25x140
Garage Stalls	2
School District	181
Taxes	\$1,236
Taxes with Assessments	\$1,236
Tax Year	2024

**Additional Features:**

**Fuel:** Natural Gas **Garage:** 2 **Heat:** Forced Air **Sewer:** City Sewer/Connected **Water:** City Water/Connected

**Driving Directions:**

From HWY 210 & 371, head East on 210 for 2.6 miles & turn left on to 1st Ave. NE & turn right in to parking lot.



Listed By:  
Edina Realty, Inc.

Affinity Real Estate Inc. participates in the Regional Multiple Listing Service of Minnesota, Inc Broker Reciprocity (sm) program, allowing us to display other broker's listings on our website. All properties are subject to prior sale, change or withdrawal.



**Call Affinity Real Estate**

**218-237-3333**

**info@affinityrealestate.com**



**Affinity Real Estate - 600 Park Avenue South - Park Rapids MN 56470**

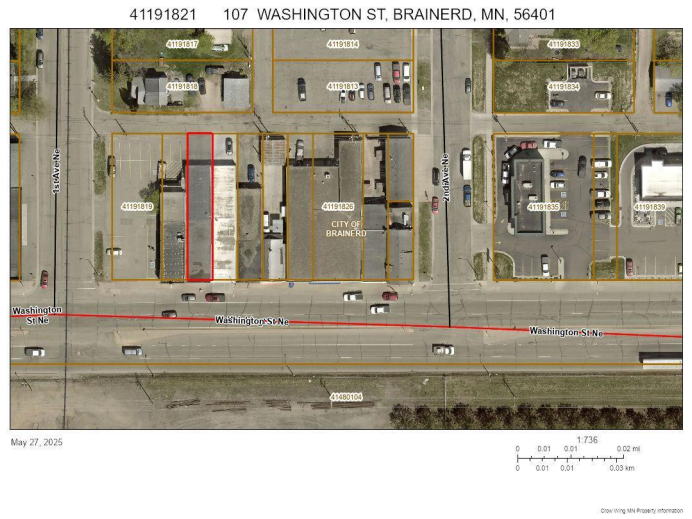


website: [www.AffinityRealEstate.com](http://www.AffinityRealEstate.com) | email: [info@affinityrealestate.com](mailto:info@affinityrealestate.com) | office: 218-237-3333 | fax: 218-237-3377



**\$149,000**  
 MLS 6728464 Commercial  
 107 Washington Street  
 Brainerd MN 56401





website: [www.AffinityRealEstate.com](http://www.AffinityRealEstate.com) | email: [info@affinityrealestate.com](mailto:info@affinityrealestate.com) | office: 218-237-3333 | fax: 218-237-3377



**\$149,000**  
MLS 6728464 Commercial  
107 Washington Street  
Brainerd MN 56401