



MLS 6728743 Lake Home

\$349,900

1,068 sq ft
2 bedrooms
1 baths

1109 County 46
Hackensack MN 56452

Waterfront: Sand Lake (Woodrow
Twp.) (11027900)

Status: Pending

Description:

Hidden along the shores of Lower Sand Lake, this seasonal cabin, complete with a bonus guest cabin, offers 5.8 acres and 540 feet of shoreline to call your own. A winding, tree-lined drive leads you in, setting the tone for lake days and quiet morning walks.

Inside the main cabin, knotty pine ceilings and charming built-ins add character throughout. The spacious kitchen features a gas stove and opens into a dining area with windows framing lake views. The large living room offers space to unwind with its wood burning stove. A generous enclosed porch is a welcoming spot to gather and its built-ins are great for storing family games, puzzles and your favorite novels. Two bedrooms and a 3/4 bath with stone accents complete the main cabin layout. Step outside to enjoy the wraparound deck, where you can sit back and enjoy the lake breeze, or explore the level yard space that's ideal for yard games or evening bonfires. Two storage sheds provide room for tools, toys, and gear. The separate guest cabin is full of charm, with whitewashed walls, a screened porch, and its own inviting layout, just right for visitors or a quiet retreat space. Whether you're here to fish, paddle, unplug, or simply take in the views, this is a place where lake living feels natural and unhurried.

Additional Details:

Year Built	1992
Lot Acres	5.8
Lot Dimensions	540x569x556x494
School District	2174
Taxes	\$1,204
Taxes with Assessments	\$1,270
Tax Year	2025

Additional Features:

Fuel: Other **Heat:** None

Driving Directions:

From Longville - Head S on Hwy 84 for 10.4 miles. Turn right onto Co Rd 46 NW for .5 miles. Turn right onto Co Rd 46 NW/Wild Plum Trl NW for approx. 1.6 miles to the subject property.



Listed By:
Heartland Real Estate

Affinity Real Estate Inc. participates in the Regional Multiple Listing Service of Minnesota, Inc Broker Reciprocity (sm) program, allowing us to display other broker's listings on our website. All properties are subject to prior sale, change or withdrawal.



Call Affinity Real Estate

218-237-3333

info@affinityrealestate.com



Affinity Real Estate - 600 Park Avenue South - Park Rapids MN 56470



website: www.AffinityRealEstate.com | email: info@affinityrealestate.com | office: 218-237-3333 | fax: 218-237-3377



\$349,900
 MLS 6728743 Lake Home
 1109 County 46
 Hackensack MN 56452



website: www.AffinityRealEstate.com | email: info@affinityrealestate.com | office: 218-237-3333 | fax: 218-237-3377

Affinity
REAL ESTATE INC

\$349,900
MLS 6728743 Lake Home
1109 County 46
Hackensack MN 56452



website: www.AffinityRealEstate.com | email: info@affinityrealestate.com | office: 218-237-3333 | fax: 218-237-3377



\$349,900
MLS 6728743 Lake Home
1109 County 46
Hackensack MN 56452



website: www.AffinityRealEstate.com | email: info@affinityrealestate.com | office: 218-237-3333 | fax: 218-237-3377



\$349,900
MLS 6728743 Lake Home
1109 County 46
Hackensack MN 56452



website: www.AffinityRealEstate.com | email: info@affinityrealestate.com | office: 218-237-3333 | fax: 218-237-3377

Affinity
REAL ESTATE INC

\$349,900
MLS 6728743 Lake Home
1109 County 46
Hackensack MN 56452



website: www.AffinityRealEstate.com | email: info@affinityrealestate.com | office: 218-237-3333 | fax: 218-237-3377

Affinity
REAL ESTATE INC

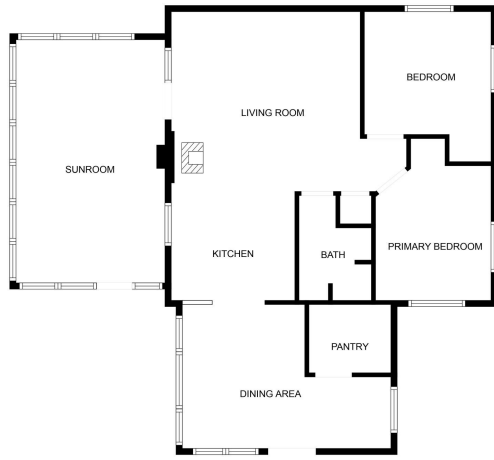
\$349,900
MLS 6728743 Lake Home
1109 County 46
Hackensack MN 56452



website: www.AffinityRealEstate.com | email: info@affinityrealestate.com | office: 218-237-3333 | fax: 218-237-3377



\$349,900
 MLS 6728743 Lake Home
 1109 County 46
 Hackensack MN 56452



FLOOR PLAN CREATED BY CUBICASA APP; MEASUREMENTS DEEMED HIGHLY RELIABLE BUT NOT GUARANTEED.

website: www.AffinityRealEstate.com | email: info@affinityrealestate.com | office: 218-237-3333 | fax: 218-237-3377



\$349,900
 MLS 6728743 Lake Home
 1109 County 46
 Hackensack MN 56452