



MLS 6728863 Lake Home

\$669,000

2,780 sq ft
4 bedrooms
3 baths

4132 Omaha Lane
Alexandria MN 56308

Waterfront: Ida

Status: Active

Description:

Beautiful Year-Round Lake Home in Ida West on Lake Ida. Nestled within a small association of just nine owners, this stunning 4-bedroom, 3-bathroom home offers nearly 3,000 square feet of thoughtfully designed living space across three levels.

Step inside to a grand great room featuring soaring wood-vaulted ceilings and a striking wall of windows that reaches the peak, flooding the space with natural light and showcasing the breathtaking surroundings. A cozy stone-surround gas fireplace adds warmth and charm to the space.

The main floor boasts a four-season sunroom, providing the perfect retreat for relaxation. The open-concept dining area extends seamlessly onto a huge deck, ideal for entertaining or enjoying peaceful views. The kitchen is equipped with stainless steel appliances, offering both style and functionality. Downstairs, a spacious recreation room, with in floor heat opens directly to the patio, creating an inviting indoor-outdoor flow. Paneled doors and thoughtful design touches enhance the character of this exceptional home. Beyond the home itself, the private marina provides lake access with a dock, making boating and water activities effortless. Enjoy evenings by the community fire ring, where neighbors gather to share stories and unwind. A lakeside sandy beach offers the perfect place to soak up the sun or take a refreshing dip in the clear waters of Lake Ida. Lake Ida, named in honor of a friend of a pioneer settler, offers a rich history, known for its exceptional fishing and stunning natural beauty. This private well-maintained association ensures a quiet and serene lakefront experience, making it the perfect getaway or year-round residence. Don't miss your chance to own this incredible lake home—schedule your showing today!

Additional Details:

Year Built	2005
Lot Acres	0.13
Lot Dimensions	36 x 39 x 145 x 112 x 63
Garage Stalls	2
School District	206
Taxes	\$3,936
Taxes with Assessments	\$3,936
Tax Year	2025



Listed By:

Kathy Fisher, Real Estate, Inc.

Open Windows, Egress Window(s), Finished, Full, Complete Kitchen Space, Walkout, Fuel, Propane, Garage: 2 Heat: Forced Air, Radiant Floor, Sewer: City Sewer/Connected, Water: Drilled, Private, 100 Gallon, Well, Air Conditioning: Central Air Affinity Real Estate Inc. participates in the Regional Multiple Listing Service of Minnesota, Inc Broker Reciprocity (sm) program, allowing us to display other broker's listings on our website. All properties are subject to prior sale, change or withdrawal.



Call Affinity Real Estate

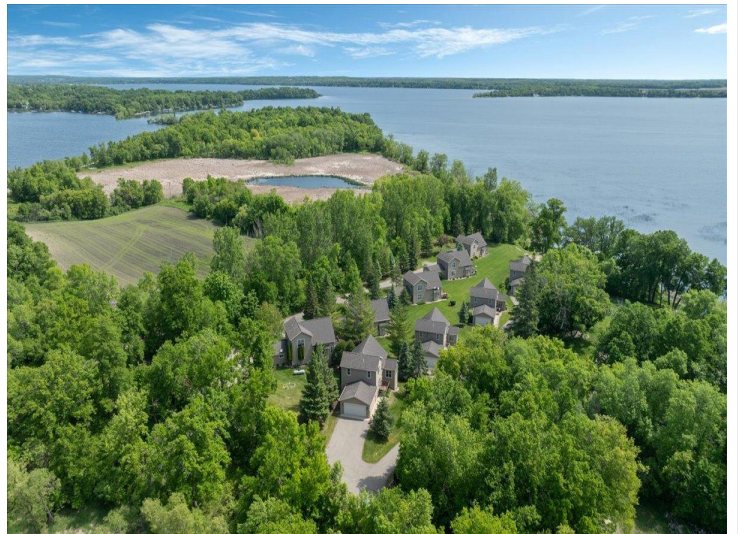
218-237-3333

info@affinityrealestate.com



on the right.

Affinity Real Estate - 600 Park Avenue South - Park Rapids MN 56470



website: www.AffinityRealEstate.com | email: info@affinityrealestate.com | office: 218-237-3333 | fax: 218-237-3377

Affinity
REAL ESTATE INC

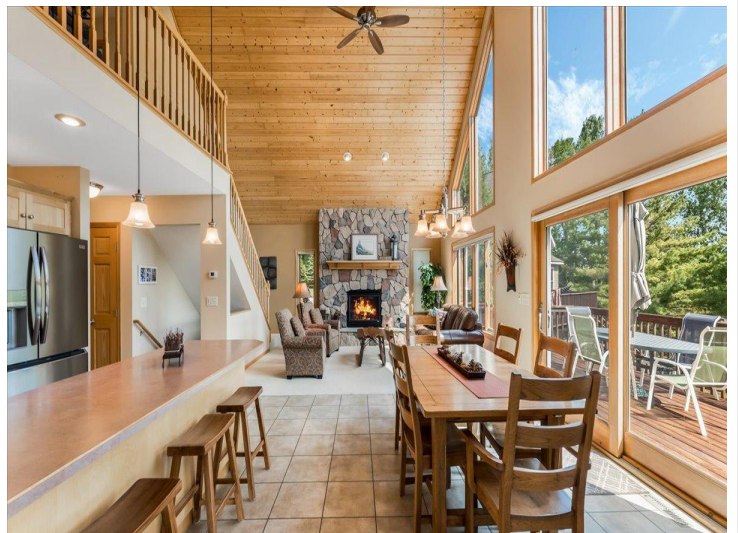
\$669,000
MLS 6728863 Lake Home
4132 Omaha Lane
Alexandria MN 56308



website: www.AffinityRealEstate.com | email: info@affinityrealestate.com | office: 218-237-3333 | fax: 218-237-3377

Affinity
REAL ESTATE INC

\$669,000
MLS 6728863 Lake Home
4132 Omaha Lane
Alexandria MN 56308



website: www.AffinityRealEstate.com | email: info@affinityrealestate.com | office: 218-237-3333 | fax: 218-237-3377

Affinity
REAL ESTATE INC

\$669,000
MLS 6728863 Lake Home
4132 Omaha Lane
Alexandria MN 56308



website: www.AffinityRealEstate.com | email: info@affinityrealestate.com | office: 218-237-3333 | fax: 218-237-3377

Affinity
REAL ESTATE INC

\$669,000
MLS 6728863 Lake Home
4132 Omaha Lane
Alexandria MN 56308



website: www.AffinityRealEstate.com | email: info@affinityrealestate.com | office: 218-237-3333 | fax: 218-237-3377

Affinity
REAL ESTATE INC

\$669,000
MLS 6728863 Lake Home
4132 Omaha Lane
Alexandria MN 56308



website: www.AffinityRealEstate.com | email: info@affinityrealestate.com | office: 218-237-3333 | fax: 218-237-3377



\$669,000
MLS 6728863 Lake Home
4132 Omaha Lane
Alexandria MN 56308



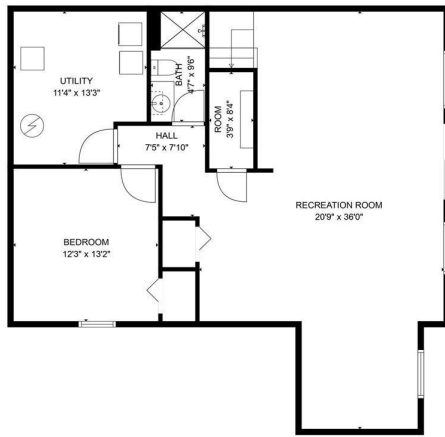
website: www.AffinityRealEstate.com | email: info@affinityrealestate.com | office: 218-237-3333 | fax: 218-237-3377

Affinity
REAL ESTATE INC

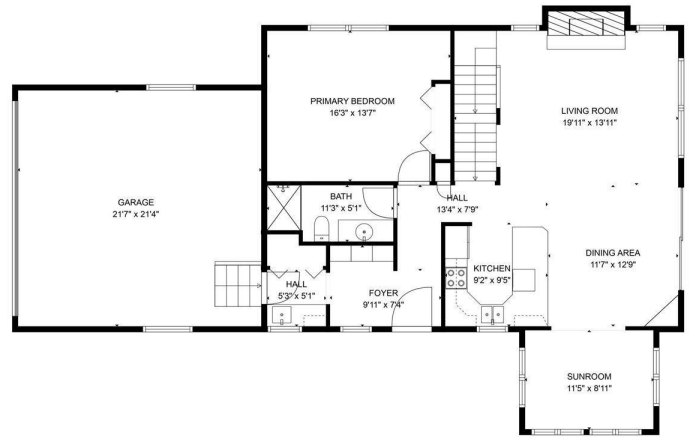
\$669,000
MLS 6728863 Lake Home
4132 Omaha Lane
Alexandria MN 56308



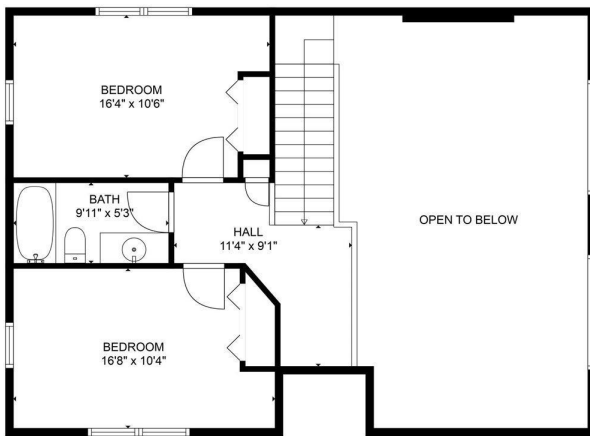
TOTAL: 2548 sq. ft.
 BELOW GROUND: 928 sq. ft. FLOOR 2: 1085 sq. ft. FLOOR 3: 535 sq. ft.
 EXCLUDED AREAS: UTILITY: 139 sq. ft. GARAGE: 461 sq. ft. FIREPLACE: 14 sq. ft.
 OPEN TO BELOW: 404 sq. ft. LOW CEILING: 11 sq. ft. WALLS: 244 sq. ft.
 FLOOR PLAN CREATED BY CURICADA ANY MEASUREMENTS DEEMED NEARLY RELIABLE BUT NOT GUARANTEED.



TOTAL: 2548 sq. ft.
 BELOW GROUND: 928 sq. ft. FLOOR 2: 1085 sq. ft. FLOOR 3: 535 sq. ft.
 EXCLUDED AREAS: UTILITY: 139 sq. ft. GARAGE: 461 sq. ft. FIREPLACE: 14 sq. ft.
 OPEN TO BELOW: 404 sq. ft. LOW CEILING: 11 sq. ft. WALLS: 244 sq. ft.
 FLOOR PLAN CREATED BY CURICADA ANY MEASUREMENTS DEEMED NEARLY RELIABLE BUT NOT GUARANTEED.



TOTAL: 2548 sq. ft.
 BELOW GROUND: 928 sq. ft. FLOOR 2: 1085 sq. ft. FLOOR 3: 535 sq. ft.
 EXCLUDED AREAS: UTILITY: 139 sq. ft. GARAGE: 461 sq. ft. FIREPLACE: 14 sq. ft.
 OPEN TO BELOW: 404 sq. ft. LOW CEILING: 11 sq. ft. WALLS: 244 sq. ft.
 FLOOR PLAN CREATED BY CURICADA ANY MEASUREMENTS DEEMED NEARLY RELIABLE BUT NOT GUARANTEED.



TOTAL: 2548 sq. ft.
 BELOW GROUND: 928 sq. ft. FLOOR 2: 1085 sq. ft. FLOOR 3: 535 sq. ft.
 EXCLUDED AREAS: UTILITY: 139 sq. ft. GARAGE: 461 sq. ft. FIREPLACE: 14 sq. ft.
 OPEN TO BELOW: 404 sq. ft. LOW CEILING: 11 sq. ft. WALLS: 244 sq. ft.
 FLOOR PLAN CREATED BY CURICADA ANY MEASUREMENTS DEEMED NEARLY RELIABLE BUT NOT GUARANTEED.



website: www.AffinityRealEstate.com | email: info@affinityrealestate.com | office: 218-237-3333 | fax: 218-237-3377

Affinity
 REAL ESTATE INC

\$669,000
 MLS 6728863 Lake Home
 4132 Omaha Lane
 Alexandria MN 56308



website: www.AffinityRealEstate.com | email: info@affinityrealestate.com | office: 218-237-3333 | fax: 218-237-3377



\$669,000
MLS 6728863 Lake Home
4132 Omaha Lane
Alexandria MN 56308