



MLS 6729130 Residential

\$439,900

2,340 sq ft
4 bedrooms
2 baths

886 28th Avenue
Backus MN 56435

Status: Active

Description:

Welcome to country living on 5 beautifully manicured acres just North of Pine River in the most gorgeous setting. This home has been cared for AND then some, with new Andersen windows throughout, new roof, flooring, mini splits, and boiler all done within the last few years. You're unlikely to find a home that offers all that PLUS a massive 40x72 Pole barn that's so clean you could eat off the floor AND a heated 30x36 garage. You'll be enjoying the spring and summer days on the 28x12 south-facing covered porch in no time. Bring your magnifying glass, because this home and set up is about as clean as it gets these days.

Additional Details:

Year Built	1998
Lot Acres	5
Lot Dimensions	498x458x495x421
Garage Stalls	20
School District	2174
Taxes	\$1,058
Taxes with Assessments	\$1,124
Tax Year	2025

Additional Features:

Basement: Block, Daylight/Lookout Windows, Egress Window(s), Full **Fuel:** Propane **Garage:** 20 **Heat:** Baseboard, Boiler, Ductless Mini-Split, Hot Water, Radiant Floor **Sewer:** Private Sewer, Tank with Drainage Field **Water:** Submersible - 4 Inch, Drilled **Air Conditioning:** Ductless Mini-Split

Driving Directions:

Take 1st St N out of Pine River until you hit the stop sign. Take a left on 28th Ave. Home is on your left.



Listed By:
Real Broker, LLC

Affinity Real Estate Inc. participates in the Regional Multiple Listing Service of Minnesota, Inc Broker Reciprocity (sm) program, allowing us to display other broker's listings on our website. All properties are subject to prior sale, change or withdrawal.



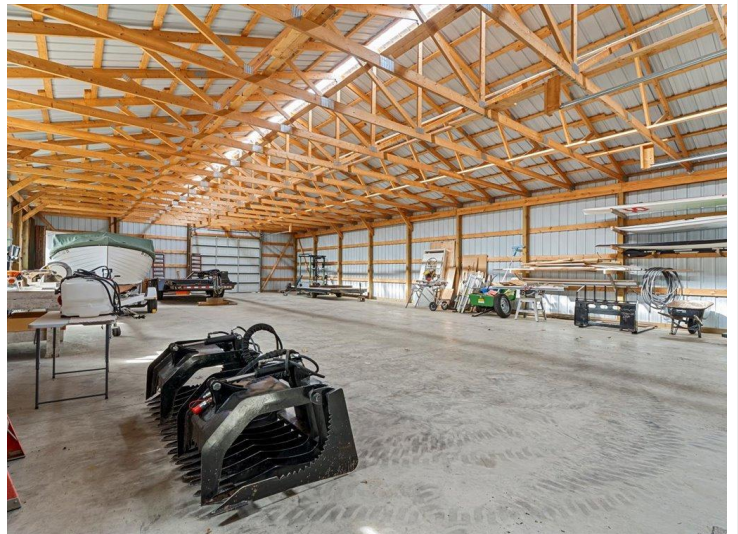
Call Affinity Real Estate

218-237-3333

info@affinityrealestate.com



Affinity Real Estate - 600 Park Avenue South - Park Rapids MN 56470



website: www.AffinityRealEstate.com | email: info@affinityrealestate.com | office: 218-237-3333 | fax: 218-237-3377



\$439,900
 MLS 6729130 Residential
 886 28th Avenue
 Backus MN 56435



website: www.AffinityRealEstate.com | email: info@affinityrealestate.com | office: 218-237-3333 | fax: 218-237-3377

Affinity
REAL ESTATE INC

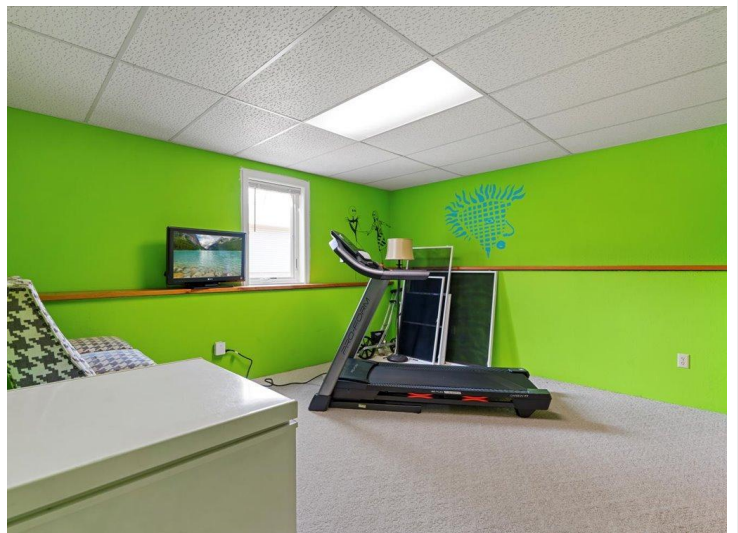
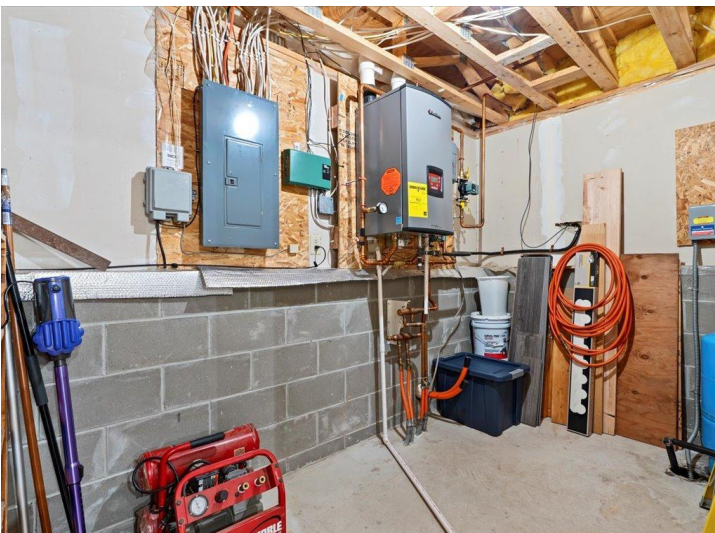
\$439,900
MLS 6729130 Residential
886 28th Avenue
Backus MN 56435



website: www.AffinityRealEstate.com | email: info@affinityrealestate.com | office: 218-237-3333 | fax: 218-237-3377



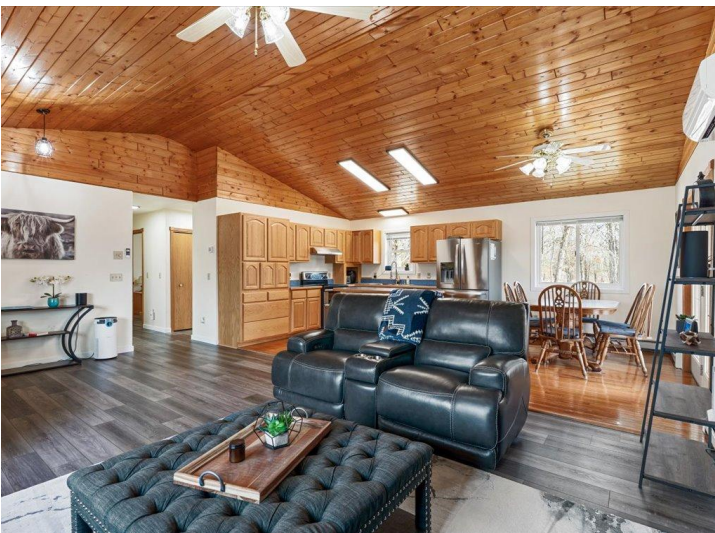
\$439,900
MLS 6729130 Residential
886 28th Avenue
Backus MN 56435



website: www.AffinityRealEstate.com | email: info@affinityrealestate.com | office: 218-237-3333 | fax: 218-237-3377

Affinity
REAL ESTATE INC

\$439,900
MLS 6729130 Residential
886 28th Avenue
Backus MN 56435



website: www.AffinityRealEstate.com | email: info@affinityrealestate.com | office: 218-237-3333 | fax: 218-237-3377

Affinity
REAL ESTATE INC

\$439,900
MLS 6729130 Residential
886 28th Avenue
Backus MN 56435



website: www.AffinityRealEstate.com | email: info@affinityrealestate.com | office: 218-237-3333 | fax: 218-237-3377

Affinity
REAL ESTATE INC

\$439,900
MLS 6729130 Residential
886 28th Avenue
Backus MN 56435



website: www.AffinityRealEstate.com | email: info@affinityrealestate.com | office: 218-237-3333 | fax: 218-237-3377

Affinity
REAL ESTATE INC

\$439,900
MLS 6729130 Residential
886 28th Avenue
Backus MN 56435



website: www.AffinityRealEstate.com | email: info@affinityrealestate.com | office: 218-237-3333 | fax:218-237-3377



\$439,900
MLS 6729130 Residential
886 28th Avenue
Backus MN 56435