



MLS 6729277 Residential

\$459,900

2,201 sq ft
3 bedrooms
3 baths

14838 Pine Avenue
Little Falls MN 56345

Status: Pending

Description:

Welcome to this beautifully designed one-level home offering over 2,100 finished square feet of comfortable living space. Ideally located next to soccer fields, parks, and recreation, this home offers the perfect blend of convenience, space, and thoughtful features.


Inside, you'll find an open and inviting layout with 9-foot ceilings and 36-inch doors throughout, providing both a sense of spaciousness and easy accessibility. Natural light fills the home thanks to strategically placed indoor tunnel lights (sky lights), creating a bright and welcoming atmosphere. The main living areas flow effortlessly, making it ideal for both everyday living and entertaining guests.

This home includes three bedrooms and three bathrooms, including a generous primary suite. A central vacuum system adds convenience, while the finished two plus stall garage offers ample room for vehicles, storage, or hobbies. Step outside to a large patio, perfect for relaxing or hosting summer gatherings, and enjoy a well-kept yard maintained by an in-ground sprinkler system.

Additional features include a 6x9 foot storm shelter for added peace of mind and brand-new shingles installed in 2023, making this home as reliable as it is beautiful. With its excellent location, quality finishes, and easy one-level living, this property is the perfect place to call home.

Additional Details:

Year Built	2007
Lot Acres	0.65
Lot Dimensions	150x185
Garage Stalls	5
School District	482
Taxes	\$4,452
Taxes with Assessments	\$4,452
Tax Year	2025



Listed By:

RE/MAX Central, Inc.

Electric, Natural Gas

Garage: 5

Water: City Water/Connected, Sand Point

Air Conditioning: Central

Sewer: City

Fireplace(s): Radiant Floor

Service of Minnesota, Inc Broker Reciprocity (sm) program, allowing us to display other broker's listings on our website. All properties are subject to prior sale, change or withdrawal.



Call Affinity Real Estate

218-287-3333

info@affinityrealestate.com



Affinity Real Estate - 600 Park Avenue South - Park Rapids MN 56470



website: www.AffinityRealEstate.com | email: info@affinityrealestate.com | office: 218-237-3333 | fax: 218-237-3377

Affinity
REAL ESTATE INC

\$459,900
MLS 6729277 Residential
14838 Pine Avenue
Little Falls MN 56345



website: www.AffinityRealEstate.com | email: info@affinityrealestate.com | office: 218-237-3333 | fax: 218-237-3377

Affinity
REAL ESTATE INC

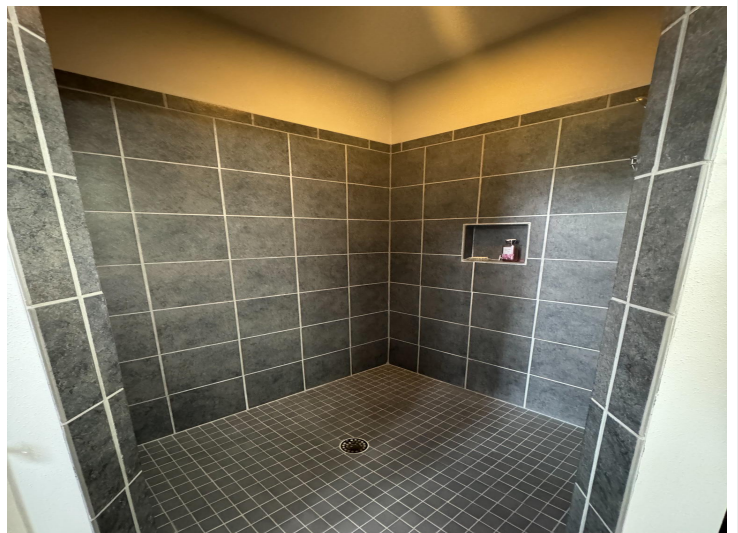
\$459,900
MLS 6729277 Residential
14838 Pine Avenue
Little Falls MN 56345



website: www.AffinityRealEstate.com | email: info@affinityrealestate.com | office: 218-237-3333 | fax: 218-237-3377

Affinity
REAL ESTATE INC

\$459,900
MLS 6729277 Residential
14838 Pine Avenue
Little Falls MN 56345



website: www.AffinityRealEstate.com | email: info@affinityrealestate.com | office: 218-237-3333 | fax: 218-237-3377

Affinity
REAL ESTATE INC

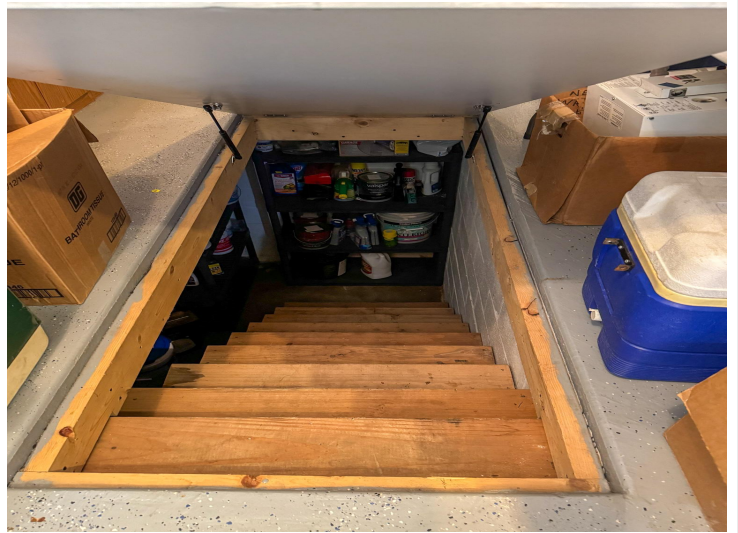
\$459,900
MLS 6729277 Residential
14838 Pine Avenue
Little Falls MN 56345



website: www.AffinityRealEstate.com | email: info@affinityrealestate.com | office: 218-237-3333 | fax: 218-237-3377

Affinity
REAL ESTATE INC

\$459,900
MLS 6729277 Residential
14838 Pine Avenue
Little Falls MN 56345



website: www.AffinityRealEstate.com | email: info@affinityrealestate.com | office: 218-237-3333 | fax: 218-237-3377



\$459,900
 MLS 6729277 Residential
 14838 Pine Avenue
 Little Falls MN 56345