



MLS 6729794 Lake Home

\$379,900

1,038 sq ft
2 bedrooms
1 baths

1289 Haleys Haven Drive
Pine River MN 56474

Waterfront: Hand Lake (Ponto Lake
Twp.) (11024200)

Status: Pending

Description:

This seasonal cabin on Hand Lake offers a blend of character, craftsmanship, and natural beauty with 100 feet of shoreline and panoramic lake views from nearly every room. The exterior stands out with hand-hewn log siding and a stone walkway that leads to the front door, setting the stage for a property that feels thoughtfully built, not just assembled. Inside, vaulted ceilings in the kitchen and living room highlight warm woodwork and classic knotty finishes. The cabin includes two bedrooms and a 3/4 bathroom, along with the practicality of a washer and dryer. One bedroom is generously sized, easily accommodating multiple beds, ideal for guests or family getaways. There's space for a dining table, and the layout flows naturally toward the screened porch, a breezy spot for reading, relaxing, or even catching a night's sleep closer to the sounds of the lake. Step outside to enjoy the firepit set on a carefully crafted stone patio, a great gathering place as the sun sets over the water. This isn't just another cabin on the lake; it's a place with presence, purpose, and a view you won't forget.

Additional Details:

Year Built	1995
Lot Acres	0.29
Lot Dimensions	100x129x100x135
School District	2174
Taxes	\$704
Taxes with Assessments	\$770
Tax Year	2025

Additional Features:

Fuel: Other **Heat:** None

Driving Directions:

From Longville - Head S on Hwy 84 for 13.8 miles. Turn left onto Co Rd 49 NW for 1.2 miles. Turn left to stay on Co Rd 49 NW for .5 miles. Turn left onto Haleys Haven Dr NW, Turn left to stay on Haleys Haven Dr NW to the subject property.



Listed By:
Heartland Real Estate

Affinity Real Estate Inc. participates in the Regional Multiple Listing Service of Minnesota, Inc Broker Reciprocity (sm) program, allowing us to display other broker's listings on our website. All properties are subject to prior sale, change or withdrawal.



Call Affinity Real Estate

218-237-3333

info@affinityrealestate.com



Affinity Real Estate - 600 Park Avenue South - Park Rapids MN 56470



website: www.AffinityRealEstate.com | email: info@affinityrealestate.com | office: 218-237-3333 | fax: 218-237-3377



\$379,900
 MLS 6729794 Lake Home
 1289 Haleys Haven Drive
 Pine River MN 56474



website: www.AffinityRealEstate.com | email: info@affinityrealestate.com | office: 218-237-3333 | fax: 218-237-3377

Affinity
REAL ESTATE INC

\$379,900
MLS 6729794 Lake Home
1289 Haleys Haven Drive
Pine River MN 56474



website: www.AffinityRealEstate.com | email: info@affinityrealestate.com | office: 218-237-3333 | fax: 218-237-3377

Affinity
REAL ESTATE INC

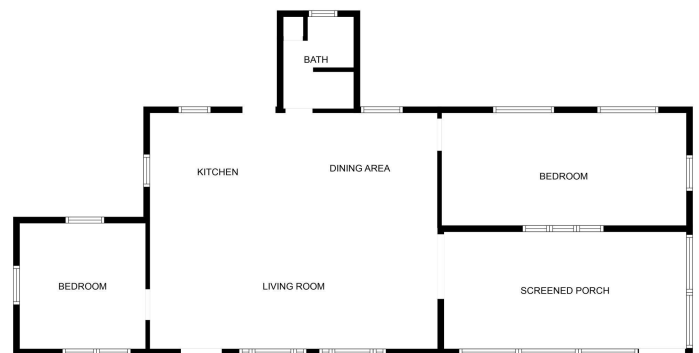
\$379,900
MLS 6729794 Lake Home
1289 Haleys Haven Drive
Pine River MN 56474



website: www.AffinityRealEstate.com | email: info@affinityrealestate.com | office: 218-237-3333 | fax: 218-237-3377



\$379,900
MLS 6729794 Lake Home
1289 Haleys Haven Drive
Pine River MN 56474



FLOOR PLAN CREATED BY CURBCASA APP. MEASUREMENTS DEEMED HIGHLY RELIABLE BUT NOT GUARANTEED.

website: www.AffinityRealEstate.com | email: info@affinityrealestate.com | office: 218-237-3333 | fax: 218-237-3377



\$379,900
 MLS 6729794 Lake Home
 1289 Haleys Haven Drive
 Pine River MN 56474