



MLS 6729795 Lake Home

\$499,000

1,290 sq ft
3 bedrooms
1 baths

9779 Woodland Trail
Brainerd MN 56401

Waterfront: Borden

Status: Active

Description:

Welcome to your TURN KEY log cabin on Borden Lake! This one-owner log home has been well loved & cared for and is ready for its new owners. Nicely situated along a no-through road, this property has lots of beautiful mature trees providing 1.4 acres of park-like privacy. Offering 118ft of sandy, north facing lakeshore, dock and breathtaking panoramic views. This 3 bedroom, one bath cabin presents an authentic Up-North feel with an open living room, dining room and kitchen layout. Enjoy the year-round cabin life with ELECTRIC and pellet in floor heat; or stay extra warm and cozy when you cuddle up next to the beautiful stone fireplace that is ready for use. Sold mostly furnished and also includes 2 paddle boats, a sail boat and pontoon boat (no trailer). The 2-1/2 car garage is heated/insulated and the grill, log splitter, Kawasaki mule and utility trailer are all included as well. Compliant Septic certificate. You can't beat all of this, plus the level of lakeshore and all that Borden Lake has to offer. An easy drive from The Twin Cities - properties on this lake do not last long so schedule your showing today.

Additional Details:

Year Built	1988
Lot Acres	1.4
Lot Dimensions	118x585x98x620
Garage Stalls	2
School District	181
Taxes	\$2,506
Taxes with Assessments	\$2,506
Tax Year	2024

Additional Features:

Fuel: Electric, Pellet **Heat:** Boiler, Hot Water, Radiant Floor

Driving Directions:

GPS Recommended; from Brainerd head east on Oak St toward S 6th St for 2.1 mi Continue onto MN-18 E for 11.4 mi. Right onto Esden Rd then left onto Mail Rt Rd/Mail Rte Rd. Turn right onto Wilderness Point Rd S (2.8mi), left onto Woodland Trail SE then left onto Woodland Trl (SEE FOR SALE SIGN)



Listed By:
RE/MAX Northland

Affinity Real Estate Inc. participates in the Regional Multiple Listing Service of Minnesota, Inc Broker Reciprocity (sm) program, allowing us to display other broker's listings on our website. All properties are subject to prior sale, change or withdrawal.



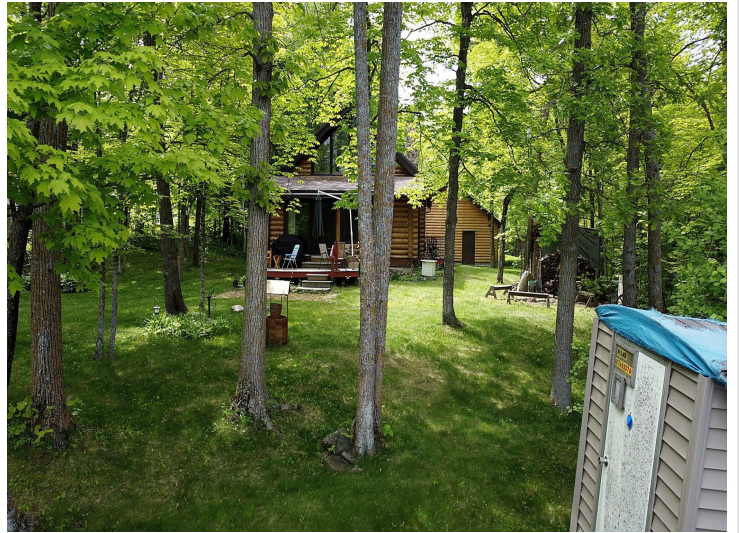
Call Affinity Real Estate

218-237-3333

info@affinityrealestate.com



Affinity Real Estate - 600 Park Avenue South - Park Rapids MN 56470



website: www.AffinityRealEstate.com | email: info@affinityrealestate.com | office: 218-237-3333 | fax: 218-237-3377

Affinity
REAL ESTATE INC

\$499,000
MLS 6729795 Lake Home
9779 Woodland Trail
Brainerd MN 56401



website: www.AffinityRealEstate.com | email: info@affinityrealestate.com | office: 218-237-3333 | fax: 218-237-3377

Affinity
REAL ESTATE INC

\$499,000
MLS 6729795 Lake Home
9779 Woodland Trail
Brainerd MN 56401



website: www.AffinityRealEstate.com | email: info@affinityrealestate.com | office: 218-237-3333 | fax: 218-237-3377

Affinity
REAL ESTATE INC

\$499,000
MLS 6729795 Lake Home
9779 Woodland Trail
Brainerd MN 56401



website: www.AffinityRealEstate.com | email: info@affinityrealestate.com | office: 218-237-3333 | fax: 218-237-3377

Affinity
REAL ESTATE INC

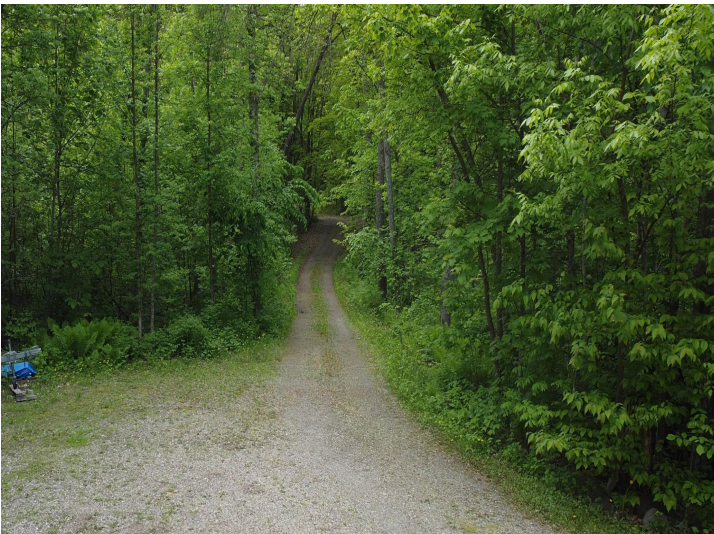
\$499,000
MLS 6729795 Lake Home
9779 Woodland Trail
Brainerd MN 56401



website: www.AffinityRealEstate.com | email: info@affinityrealestate.com | office: 218-237-3333 | fax: 218-237-3377

Affinity
REAL ESTATE INC

\$499,000
MLS 6729795 Lake Home
9779 Woodland Trail
Brainerd MN 56401



website: www.AffinityRealEstate.com | email: info@affinityrealestate.com | office: 218-237-3333 | fax: 218-237-3377



\$499,000
 MLS 6729795 Lake Home
 9779 Woodland Trail
 Brainerd MN 56401



website: www.AffinityRealEstate.com | email: info@affinityrealestate.com | office: 218-237-3333 | fax: 218-237-3377



\$499,000
 MLS 6729795 Lake Home
 9779 Woodland Trail
 Brainerd MN 56401