



MLS 6729843 Land

\$275,000

76.33 Acres
Raw Land

TBD 320th Street
Browerville MN 56438

Status: Active

Description:

Introducing the Browerville 77! This 77-acre gem is a hunter's paradise, meticulously designed for unforgettable hunting experiences. Packed with features to maximize game activity, this property is ready to deliver top-tier hunting for years to come.

Property highlights include a mix of mature timber, rolling elevation changes, and a pristine pond, creating a diverse habitat teeming with deer and turkey sign. A sprawling trail system winds through the property, allowing strategic access to prime hunting spots based on wind and time of day. The varied terrain, with its ridges and natural funnels, sets up perfectly for stand placement and game movement, ensuring you're always in the action. Additionally, several locations on the property are ideal for creating food plots to further enhance wildlife attraction and hunting opportunities. The pond serves as a magnet for wildlife, drawing in deer and turkey year-round, while the mature timber and thick cover provide ideal bedding areas. Dirt road access on two sides makes getting in and out a breeze, keeping your hunting grounds undisturbed. Electric and a well are already in place, ready for a hunting camp, cabin, or dream retreat. With abundant deer and turkey, this turn-key property offers endless opportunities for the serious hunter. Don't miss your chance to own this ultimate hunting haven in Browerville!

Additional Details:

Lot Acres	76.33
Lot Dimensions	77ac
School District	787
Taxes	\$1,972
Taxes with Assessments	\$1,972
Tax Year	2025

Additional Features:

Driving Directions:

From Browerville, head east on County Rd. 16, then take a right onto 291st Ave. In 1 mile, turn left on 320th Street. Property will be on the left side of the road.



Listed By:
American Legacy Land Co., LLC

Affinity Real Estate Inc. participates in the Regional Multiple Listing Service of Minnesota, Inc Broker Reciprocity (sm) program, allowing us to display other broker's listings on our website. All properties are subject to prior sale, change or withdrawal.



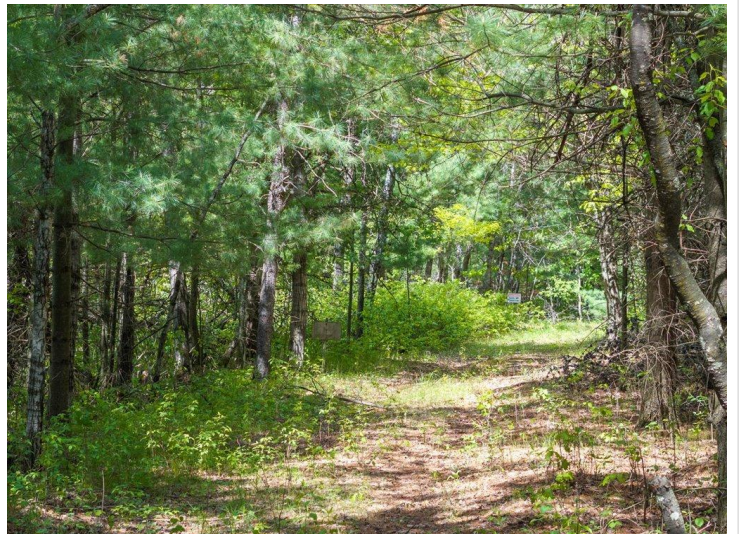
Call Affinity Real Estate

218-237-3333

info@affinityrealestate.com



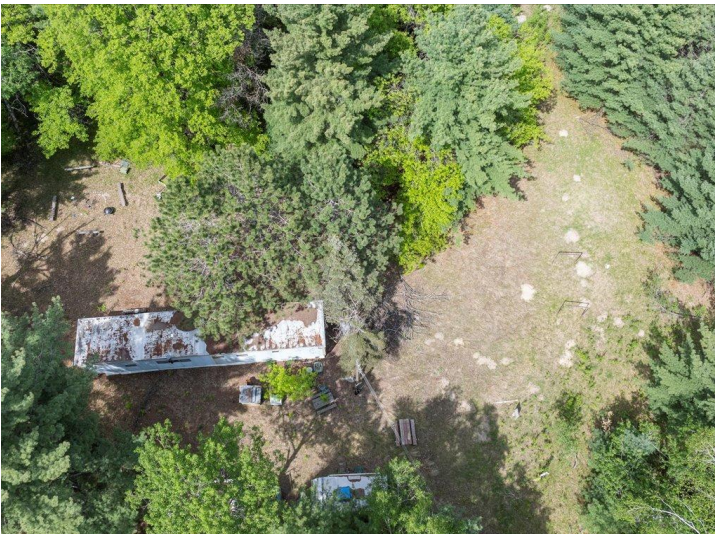
Affinity Real Estate - 600 Park Avenue South - Park Rapids MN 56470



website: www.AffinityRealEstate.com | email: info@affinityrealestate.com | office: 218-237-3333 | fax: 218-237-3377



\$275,000
 MLS 6729843 Land
 TBD 320th Street
 Browerville MN 56438



website: www.AffinityRealEstate.com | email: info@affinityrealestate.com | office: 218-237-3333 | fax: 218-237-3377



\$275,000
 MLS 6729843 Land
 TBD 320th Street
 Browerville MN 56438



website: www.AffinityRealEstate.com | email: info@affinityrealestate.com | office: 218-237-3333 | fax: 218-237-3377



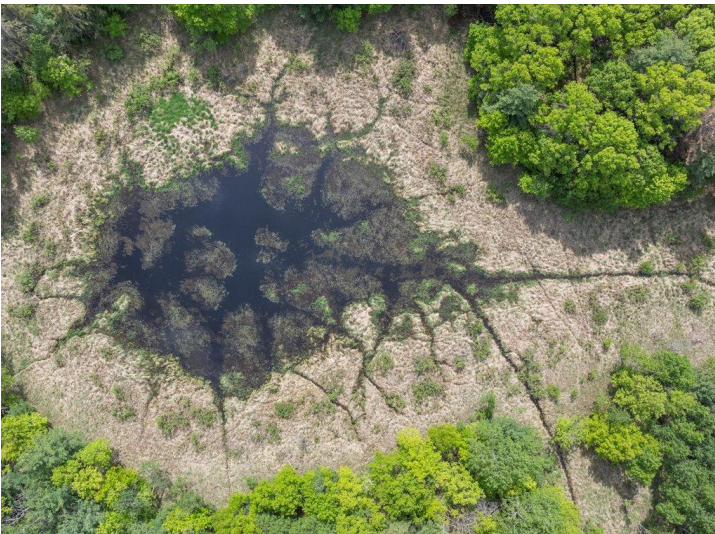
\$275,000
MLS 6729843 Land
TBD 320th Street
Browerville MN 56438



website: www.AffinityRealEstate.com | email: info@affinityrealestate.com | office: 218-237-3333 | fax: 218-237-3377



\$275,000
 MLS 6729843 Land
 TBD 320th Street
 Browerville MN 56438



website: www.AffinityRealEstate.com | email: info@affinityrealestate.com | office: 218-237-3333 | fax: 218-237-3377



\$275,000
 MLS 6729843 Land
 TBD 320th Street
 Browerville MN 56438



website: www.AffinityRealEstate.com | email: info@affinityrealestate.com | office: 218-237-3333 | fax: 218-237-3377



\$275,000
 MLS 6729843 Land
 TBD 320th Street
 Browerville MN 56438



website: www.AffinityRealEstate.com | email: info@affinityrealestate.com | office: 218-237-3333 | fax:218-237-3377



\$275,000
MLS 6729843 Land
TBD 320th Street
Browerville MN 56438