



MLS 6729994 Lake Land

\$59,900

Description:

Get ready to create lasting memories with this affordable Cabin get-away, perfect for a family compound. This rare, double lot is 0.17 Acres, with level & rolling elevation, and has many possibilities. Included with the lots: 2000 Breckenridge Park Model in Excellent condition with an added pitched roof, screenhouse gazebo, an expansive deck that runs alongside park model and holds the roomy screenhouse gazebo, 8'x8' storage shed, 5'x12' storage shed, and a rustic firepit area on the second lot. There is only one holding tank and it is located on the lot that houses the park model. The Park Model is in well cared for and has an open living space with 2 pull out couches, one has an according door for second bedroom, kitchen area is very functional/useful, dedicated dining area with 4 chairs, bedroom has a queen size bed, bathroom has shower and regular size commode. The furnace has not worked for some time, and the sellers use electric Fireplace to heat the entire park model. The water heater is electric. Central air works. The propane is only needed for the stove. All Interior and Exterior furniture, all items in sheds, as well as everything else you see is included in the purchase of the lots. Come take a look!!

Additional Details:

Lot Acres	0.17
Lot Dimensions	115x85x55x85
School District	186
Taxes	\$489
Taxes with Assessments	\$514
Tax Year	2025

Additional Features:

Driving Directions:

From 30615 Ranchette Dr and the security gates of Whitebirch Cluster 2 - Once securing access thru gates, go forward down Whitebirch Way to RT on Plumwood Trail to property on LT



Listed By:
Edina Realty, Inc.

Affinity Real Estate Inc. participates in the Regional Multiple Listing Service of Minnesota, Inc Broker Reciprocity (sm) program, allowing us to display other broker's listings on our website. All properties are subject to prior sale, change or withdrawal.



Call Affinity Real Estate

218-237-3333

info@affinityrealestate.com



Affinity Real Estate - 600 Park Avenue South - Park Rapids MN 56470



website: www.AffinityRealEstate.com | email: info@affinityrealestate.com | office: 218-237-3333 | fax: 218-237-3377

Affinity
REAL ESTATE INC

\$59,900

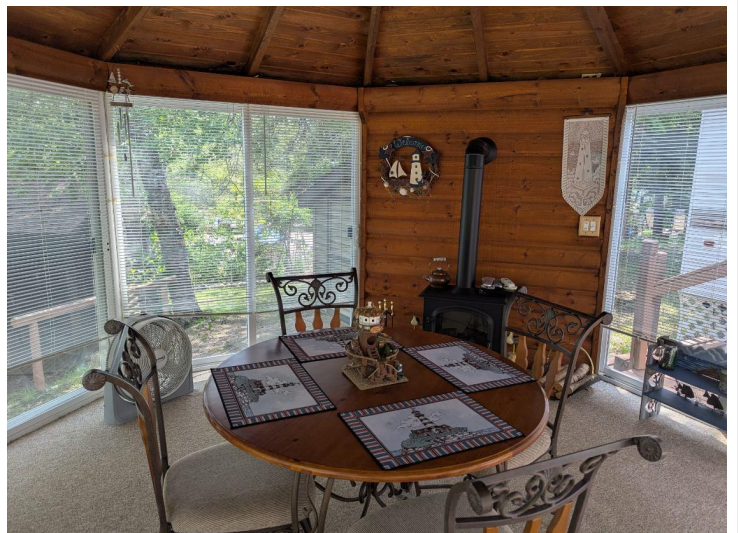
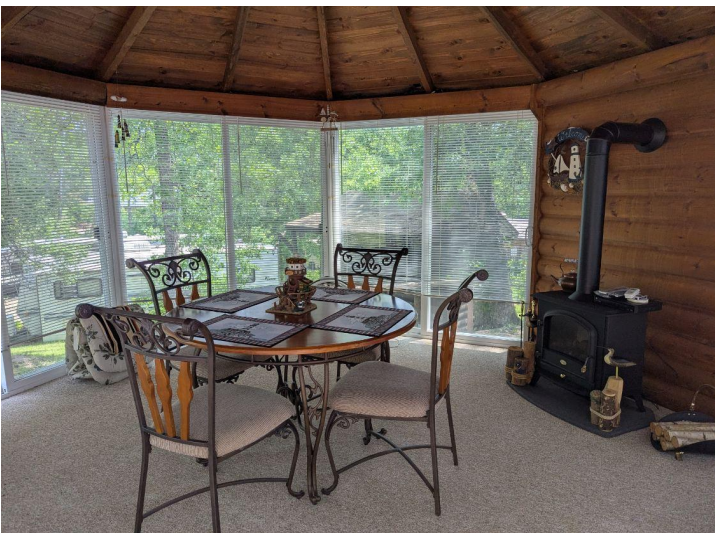
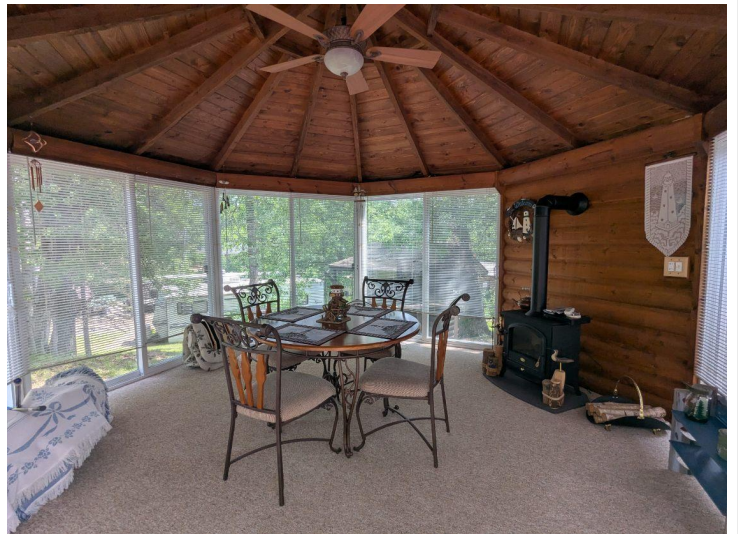
MLS 6729994 Lake Land
30740&754 Plumwood Trail
Pequot Lakes MN 56472



website: www.AffinityRealEstate.com | email: info@affinityrealestate.com | office: 218-237-3333 | fax: 218-237-3377



\$59,900
 MLS 6729994 Lake Land
 30740&754 Plumwood Trail
 Pequot Lakes MN 56472



website: www.AffinityRealEstate.com | email: info@affinityrealestate.com | office: 218-237-3333 | fax: 218-237-3377

Affinity
REAL ESTATE INC

\$59,900
MLS 6729994 Lake Land
30740&754 Plumwood Trail
Pequot Lakes MN 56472



website: www.AffinityRealEstate.com | email: info@affinityrealestate.com | office: 218-237-3333 | fax: 218-237-3377

Affinity
REAL ESTATE INC

\$59,900

MLS 6729994 Lake Land
30740&754 Plumwood Trail
Pequot Lakes MN 56472



website: www.AffinityRealEstate.com | email: info@affinityrealestate.com | office: 218-237-3333 | fax: 218-237-3377

Affinity
REAL ESTATE INC

\$59,900

MLS 6729994 Lake Land
30740&754 Plumwood Trail
Pequot Lakes MN 56472



website: www.AffinityRealEstate.com | email: info@affinityrealestate.com | office: 218-237-3333 | fax: 218-237-3377



\$59,900
MLS 6729994 Lake Land
30740&754 Plumwood Trail
Pequot Lakes MN 56472