

MLS 6730222 Lake Land

**\$49,000**

#### Description:

Escape to the lake with this beautiful lot on the peaceful shores of Toad Lake—an ideal setup for your camper, RV, or future getaway plans. This private, wooded property offers a tranquil northwoods setting with easy lake access and room to spread out and relax.

Already equipped with a septic holding tank, this lot is ready for your camper, making it the perfect turn-key spot for weekend getaways, seasonal stays, or summer adventures. Enjoy boating, fishing, kayaking, and swimming right from the lake, with plenty of space to unwind and enjoy nature.

Schedule your showing today!

#### Additional Details:

Lot Acres	3.5
Lot Dimensions	irregular
School District	23
Taxes	\$110
Taxes with Assessments	\$110
Tax Year	2025

#### Additional Features:

#### Driving Directions:

Going east on highway 34 towards Toad Lake, turn right onto W Toad Lake Dr, property will be located down the road on the left.



Listed By:  
Centennial Realty

Affinity Real Estate Inc. participates in the Regional Multiple Listing Service of Minnesota, Inc Broker Reciprocity (sm) program, allowing us to display other broker's listings on our website. All properties are subject to prior sale, change or withdrawal.



Call Affinity Real Estate

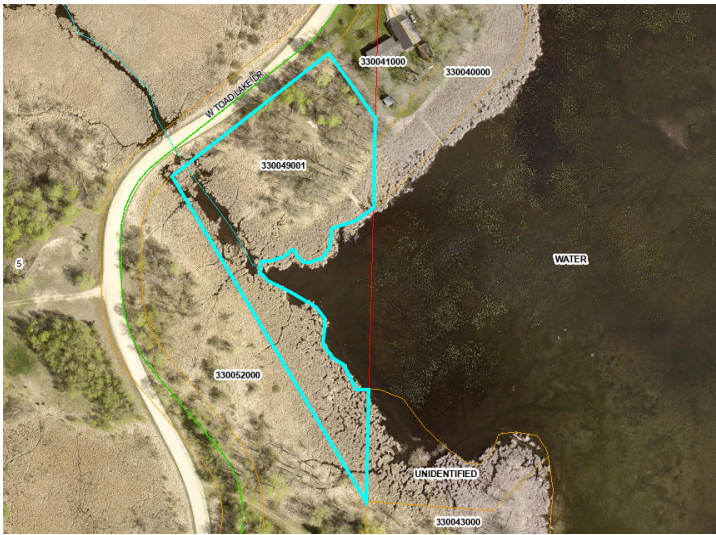
**218-237-3333**

[info@affinityrealestate.com](mailto:info@affinityrealestate.com)



Affinity Real Estate - 600 Park Avenue South - Park Rapids MN 56470





website: [www.AffinityRealEstate.com](http://www.AffinityRealEstate.com) | email: [info@affinityrealestate.com](mailto:info@affinityrealestate.com) | office: 218-237-3333 | fax: 218-237-3377



**\$49,000**

MLS 6730222 Lake Land  
21xxx W Toad Lake Drive  
Osage MN 56570





website: [www.AffinityRealEstate.com](http://www.AffinityRealEstate.com) | email: [info@affinityrealestate.com](mailto:info@affinityrealestate.com) | office: 218-237-3333 | fax: 218-237-3377



**\$49,000**

MLS 6730222 Lake Land  
21xxx W Toad Lake Drive  
Osage MN 56570





website: [www.AffinityRealEstate.com](http://www.AffinityRealEstate.com) | email: [info@affinityrealestate.com](mailto:info@affinityrealestate.com) | office: 218-237-3333 | fax: 218-237-3377



**\$49,000**

MLS 6730222 Lake Land  
21xxx W Toad Lake Drive  
Osage MN 56570