



MLS 6730271 Lake Home

\$349,900

1,560 sq ft
3 bedrooms
1 baths

24863 Norway Pine Place
Emily MN 56447

Waterfront: Mud Lake (Ross Lake
Twp.)

Status: Active

Description:

Enjoy the tranquility, nostalgia and privacy of this 1.72 acre lot, peppered with Tamarack and Pines, there sits a 1560sf UP North cabin. Mud lake is a 76 acre lake Natural Environmental Lake with a max depth of 28', there is also a connection to Island lake that I have heard can be navigated with a small fishing boat, canoe or kayak. The property boast 245' of frontage with hard sand bottom. The cabin has many recent upgrades: Engineered siding, all new windows, new roofs on cabin and garage, two new decks, new well pump, stainless stove and refrigerator. The cabin has 3 bedrooms (One on main level, one on lower lever and the loft is the third bedroom), 1 full bathroom. Large 25x30 detached garage with electric. The vaulted ceiling creates an open, airy main living space, one bedroom on main level and full bath. Loft creates another sleeping area. Head downstairs to the partially finished lower level: family room, bedroom and utility room. From the lakeside deck (14x25) you can see and hear wildlife like: turkeys, swans and loons. The fishing is excellent. Roadside deck (8x18) makes for a great place to have your coffee. Wood stove heats the entire main floor with electric baseboard heat in the bedroom and bathroom. Cabin has 2x12 joists and is very well insulated. Well is over 200' deep. Roll in dock for private lake. The exterior is new, and the interior needs your finishing touches. As you step onto this property, it will take your breath away, don't miss out on this welcoming family retreat.

Additional Details:

Year Built	1976
Lot Acres	1.72
Lot Dimensions	245x290x185x231
Garage Stalls	2
School District	8001
Taxes	\$994
Taxes with Assessments	\$994
Tax Year	2025

Additional Features:

Fuel: Electric, Wood **Heat:** Baseboard, Wood Stove



Listed By:
Edina Realty, Inc.

From Crosslake take CR3N to RT on CR37 to Lt on CR36 (pass over State Hwy 22) follow CR36 forward onto CR106 to LT onto Norway Pine Place to 24863 on LT (22 mi)
Affinity Real Estate Inc. participates in the Regional Multiple Listing Service of Minnesota, Inc Broker Reciprocity (sm) program, allowing us to display other broker's listings on our website. All properties are subject to prior sale, change or withdrawal.



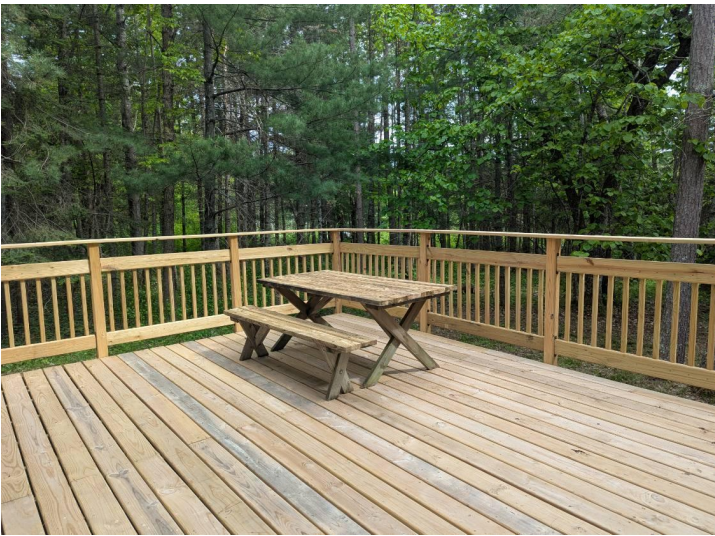
Call Affinity Real Estate

218-237-3333

info@affinityrealestate.com



Affinity Real Estate - 600 Park Avenue South - Park Rapids MN 56470

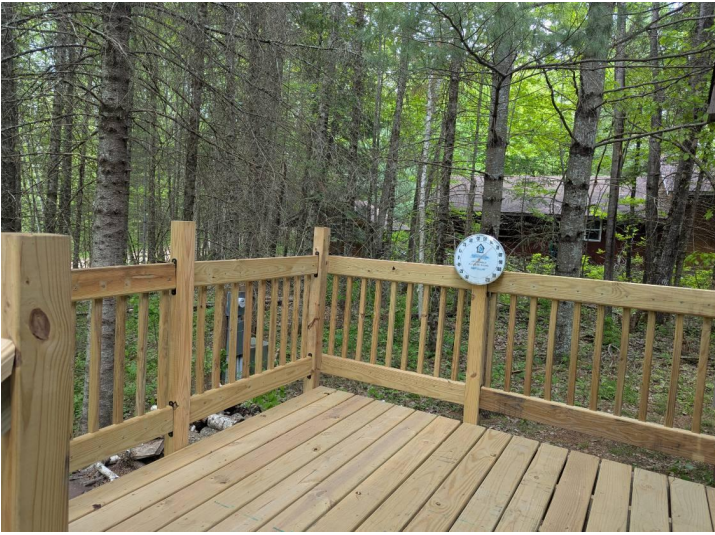


website: www.AffinityRealEstate.com | email: info@affinityrealestate.com | office: 218-237-3333 | fax: 218-237-3377

Affinity
REAL ESTATE INC

\$349,900

MLS 6730271 Lake Home
24863 Norway Pine Place
Emily MN 56447



website: www.AffinityRealEstate.com | email: info@affinityrealestate.com | office: 218-237-3333 | fax: 218-237-3377



\$349,900

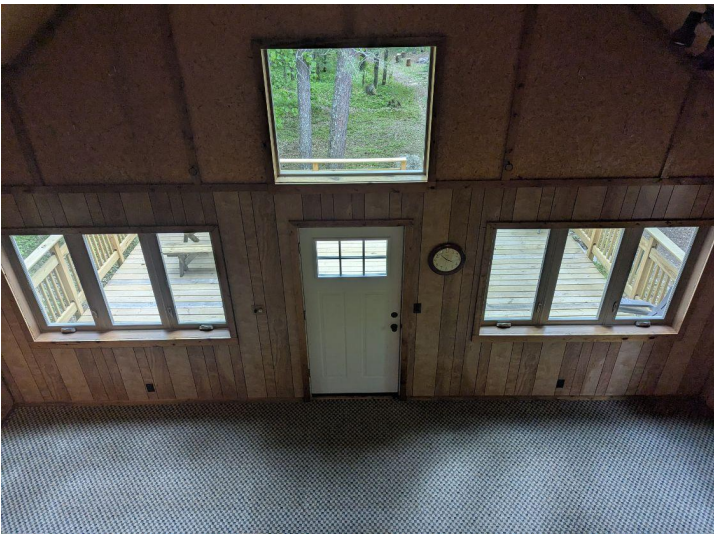
MLS 6730271 Lake Home
24863 Norway Pine Place
Emily MN 56447



website: www.AffinityRealEstate.com | email: info@affinityrealestate.com | office: 218-237-3333 | fax: 218-237-3377

Affinity
REAL ESTATE INC

\$349,900
MLS 6730271 Lake Home
24863 Norway Pine Place
Emily MN 56447



website: www.AffinityRealEstate.com | email: info@affinityrealestate.com | office: 218-237-3333 | fax: 218-237-3377



\$349,900
 MLS 6730271 Lake Home
 24863 Norway Pine Place
 Emily MN 56447



website: www.AffinityRealEstate.com | email: info@affinityrealestate.com | office: 218-237-3333 | fax: 218-237-3377



\$349,900
 MLS 6730271 Lake Home
 24863 Norway Pine Place
 Emily MN 56447



website: www.AffinityRealEstate.com | email: info@affinityrealestate.com | office: 218-237-3333 | fax: 218-237-3377



\$349,900
MLS 6730271 Lake Home
24863 Norway Pine Place
Emily MN 56447



website: www.AffinityRealEstate.com | email: info@affinityrealestate.com | office: 218-237-3333 | fax: 218-237-3377



\$349,900

MLS 6730271 Lake Home
24863 Norway Pine Place
Emily MN 56447



website: www.AffinityRealEstate.com | email: info@affinityrealestate.com | office: 218-237-3333 | fax: 218-237-3377



\$349,900
 MLS 6730271 Lake Home
 24863 Norway Pine Place
 Emily MN 56447



website: www.AffinityRealEstate.com | email: info@affinityrealestate.com | office: 218-237-3333 | fax: 218-237-3377



\$349,900

MLS 6730271 Lake Home
24863 Norway Pine Place
Emily MN 56447