



MLS 6730323 Lake Home

**\$299,900**

880 sq ft  
2 bedrooms  
1 baths

3865 Wahtomin Trail  
Alexandria MN 56308

Waterfront: Ida

Status: Active

**Description:**

Pack your bags and head to the lake! That's what you will be doing when you're the new proud owner of this year-round home on Lake Ida! This 2BR, 1BA is welcoming a new owner and will definitely meet those things on your wish list for lake enjoyment. Take in the beautiful Lake Ida views right outside your window or seated on your deck. Enjoy the spacious grounds for all the yard games, convenient location to the in-ground swimming pool, and so much more. Inside you will find great flow as the floor plan provides a living, kitchen, and dining area. Spend your day soaking up the sun while the association takes care of the lawn, pool, snow removal, and docks, to name a few things. One look is all it takes with this one!

**Additional Details:**

Year Built	1986
Lot Acres	0.03
Lot Dimensions	27x50x27x50
School District	206
Taxes	\$1,934
Taxes with Assessments	\$1,934
Tax Year	2025

**Additional Features:**

**Fuel:** Electric, Propane **Heat:** Baseboard

**Driving Directions:**

From Alexandria head W on 82 to Co Rd 22 take right and follow to Co Rd 6, go approx. 2.5 miles to Foxy Lane, take right and right onto Wahtomin Trail, then left to sign.



Listed By:  
Central MN Realty LLC

Affinity Real Estate Inc. participates in the Regional Multiple Listing Service of Minnesota, Inc Broker Reciprocity (sm) program, allowing us to display other broker's listings on our website. All properties are subject to prior sale, change or withdrawal.



**Call Affinity Real Estate**

**218-237-3333**

**info@affinityrealestate.com**



**Affinity Real Estate - 600 Park Avenue South - Park Rapids MN 56470**



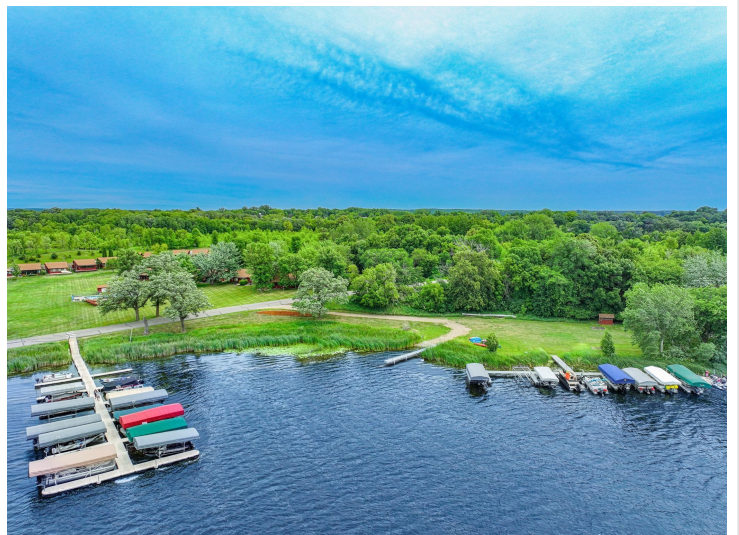


website: [www.AffinityRealEstate.com](http://www.AffinityRealEstate.com) | email: [info@affinityrealestate.com](mailto:info@affinityrealestate.com) | office: 218-237-3333 | fax: 218-237-3377



**\$299,900**  
 MLS 6730323 Lake Home  
 3865 Wahtomin Trail  
 Alexandria MN 56308





website: [www.AffinityRealEstate.com](http://www.AffinityRealEstate.com) | email: [info@affinityrealestate.com](mailto:info@affinityrealestate.com) | office: 218-237-3333 | fax: 218-237-3377

**Affinity**  
REAL ESTATE INC

**\$299,900**  
MLS 6730323 Lake Home  
3865 Wahtomin Trail  
Alexandria MN 56308



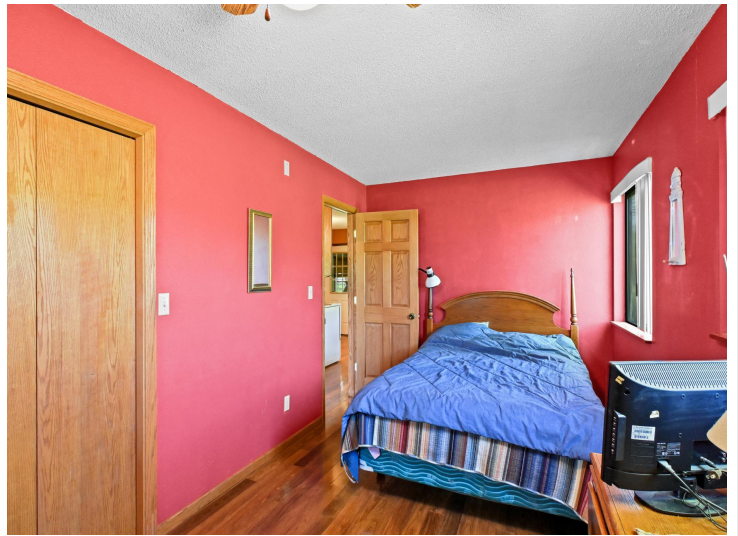


website: [www.AffinityRealEstate.com](http://www.AffinityRealEstate.com) | email: [info@affinityrealestate.com](mailto:info@affinityrealestate.com) | office: 218-237-3333 | fax: 218-237-3377

**Affinity**  
REAL ESTATE INC

**\$299,900**  
MLS 6730323 Lake Home  
3865 Wahtomin Trail  
Alexandria MN 56308





website: [www.AffinityRealEstate.com](http://www.AffinityRealEstate.com) | email: [info@affinityrealestate.com](mailto:info@affinityrealestate.com) | office: 218-237-3333 | fax: 218-237-3377

**Affinity**  
REAL ESTATE INC

**\$299,900**  
MLS 6730323 Lake Home  
3865 Wahtomin Trail  
Alexandria MN 56308





website: [www.AffinityRealEstate.com](http://www.AffinityRealEstate.com) | email: [info@affinityrealestate.com](mailto:info@affinityrealestate.com) | office: 218-237-3333 | fax: 218-237-3377



**\$299,900**  
 MLS 6730323 Lake Home  
 3865 Wahtomin Trail  
 Alexandria MN 56308





website: [www.AffinityRealEstate.com](http://www.AffinityRealEstate.com) | email: [info@affinityrealestate.com](mailto:info@affinityrealestate.com) | office: 218-237-3333 | fax: 218-237-3377



**\$299,900**  
MLS 6730323 Lake Home  
3865 Wahtomin Trail  
Alexandria MN 56308