



MLS 6730526 Residential

\$599,000

1,664 sq ft
3 bedrooms
2 baths

8059 29th Avenue
Pequot Lakes MN 56472

Status: Pending

Description:

This amazing property is a truly rare find! It consists of 60.1 acres of gently rolling land that is bordered on the north and west boundaries by 160 -acres of County Administered Land. That alone gives you access to excellent hiking and deer and grouse hunting. Your 60.1 acres contains a 3-acre pond that's approximately 5 or 6 feet deep with an abundance of ducks, geese and swans. From the deck of your home, you over look that pond plus a field that has a fenced in apple orchard and fenced in red and white grape vines, both areas approximately 1.5-acres with 8 ft fences. With a little TLC, you call those areas whatever wine vineyard or apple orchard that fits your fancy.

The approximately 20 acres that make up your west end has nearly a mile of trails for walking, side by siding, horseback riding and of course, hunting.

The house has new central air, new stainless appliances, main floor laundry, several upgrades, and a 30'x30' attached garage. The composite decking has all new wood railing and stairs that go down to the new patio with beautiful pavers. For storage, two secure storage containers will be included.

Additional Details:

| | |
|------------------------|----------|
| Year Built | 1990 |
| Lot Acres | 60.1 |
| Lot Dimensions | 990x2640 |
| Garage Stalls | 2 |
| School District | 116 |
| Taxes | \$2,080 |
| Taxes with Assessments | \$2,146 |
| Tax Year | 2025 |

Additional Features:

Basement: Block, Egress Window(s), Finished, Full **Fuel:** Propane **Garage:** 2 **Heat:** Forced Air **Sewer:** Tank with Drainage Field **Water:** Drilled
Air Conditioning: Central Air

Driving Directions:

From the intersection of HWY 371 and County Road 29, go west 6.7-miles to south on 29th Ave SW 1-mile to sign and property on your left.



Listed By:
RE/MAX Results - Nisswa

Affinity Real Estate Inc. participates in the Regional Multiple Listing Service of Minnesota, Inc Broker Reciprocity (sm) program, allowing us to display other broker's listings on our website. All properties are subject to prior sale, change or withdrawal.



Call Affinity Real Estate

218-237-3333

info@affinityrealestate.com



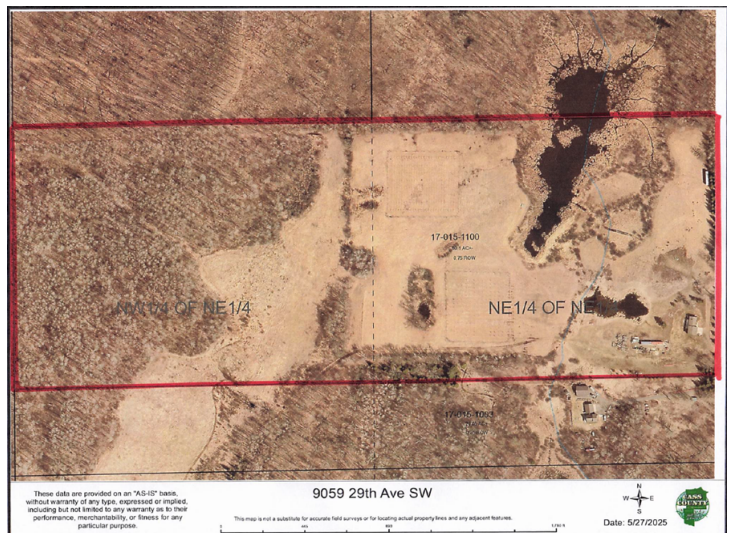
Affinity Real Estate - 600 Park Avenue South - Park Rapids MN 56470



website: www.AffinityRealEstate.com | email: info@affinityrealestate.com | office: 218-237-3333 | fax: 218-237-3377

Affinity
REAL ESTATE INC

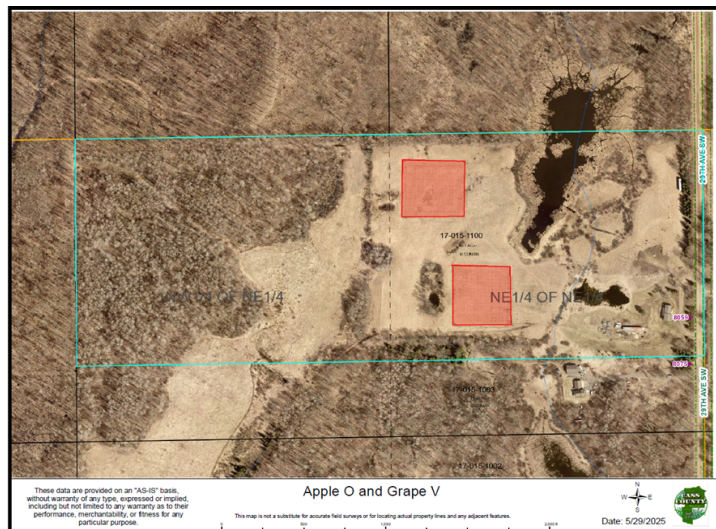
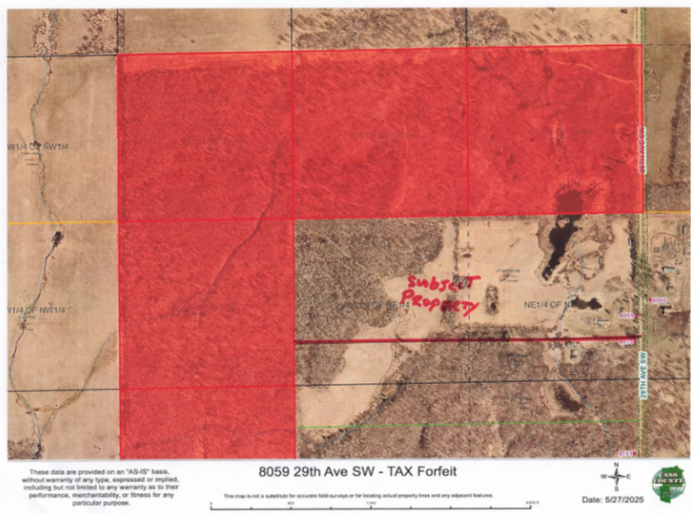
\$599,000
MLS 6730526 Residential
8059 29th Avenue
Pequot Lakes MN 56472



website: www.AffinityRealEstate.com | email: info@affinityrealestate.com | office: 218-237-3333 | fax: 218-237-3377

Affinity
REAL ESTATE INC

\$599,000
MLS 6730526 Residential
8059 29th Avenue
Pequot Lakes MN 56472



website: www.AffinityRealEstate.com | email: info@affinityrealestate.com | office: 218-237-3333 | fax: 218-237-3377

Affinity
REAL ESTATE INC

\$599,000
MLS 6730526 Residential
8059 29th Avenue
Pequot Lakes MN 56472



website: www.AffinityRealEstate.com | email: info@affinityrealestate.com | office: 218-237-3333 | fax: 218-237-3377



\$599,000
MLS 6730526 Residential
8059 29th Avenue
Pequot Lakes MN 56472



website: www.AffinityRealEstate.com | email: info@affinityrealestate.com | office: 218-237-3333 | fax: 218-237-3377

Affinity
REAL ESTATE INC

\$599,000
MLS 6730526 Residential
8059 29th Avenue
Pequot Lakes MN 56472



website: www.AffinityRealEstate.com | email: info@affinityrealestate.com | office: 218-237-3333 | fax: 218-237-3377



\$599,000

MLS 6730526 Residential
8059 29th Avenue
Pequot Lakes MN 56472



website: www.AffinityRealEstate.com | email: info@affinityrealestate.com | office: 218-237-3333 | fax:218-237-3377



\$599,000

MLS 6730526 Residential
8059 29th Avenue
Pequot Lakes MN 56472