



MLS 6731047 Land

\$240,000

40 Acres
Raw Land

Parcel 2 56 Street
Pequot Lakes MN 56472

Status: Active

Description:

Experience the perfect combination of seclusion and natural beauty with this exceptional 40-acre property. Situated in a peaceful location, this expansive tract includes 30 acres of open, tillable land. Please refer to the aerial images for a detailed view of the property's location and topography. Accessed conveniently off 56th SW, this property has a gravel road maintained by the township, ensuring reliable entry. You will also appreciate being just a short drive away from all the amenities that Pequot Lakes has to offer. Additional adjacent parcels are available for sale as well.

Additional Details:

Lot Acres	40
Lot Dimensions	1320 x 1320
School District	2174
Taxes	(unreported)
Taxes with Assessments	(unreported)
Tax Year	2025

Additional Features:

Driving Directions:

From the intersection of Patriot Avenue & County Road 17 South of Pequot Lakes, take County Road 17 for 6.2 miles, continue onto 56th Street SW to the 40 acres. The 40 acres will be on your right and is before the property addressed 3101.



Listed By:
Larson Group Real Estate/Kelle

Affinity Real Estate Inc. participates in the Regional Multiple Listing Service of Minnesota, Inc Broker Reciprocity (sm) program, allowing us to display other broker's listings on our website. All properties are subject to prior sale, change or withdrawal.



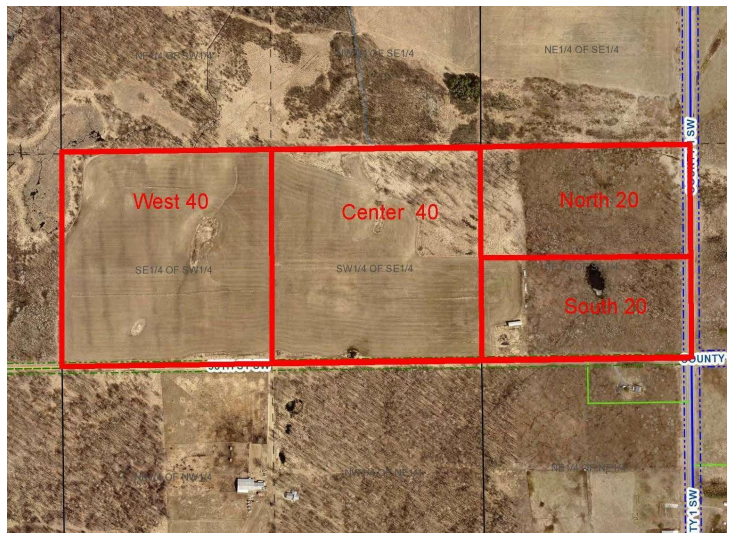
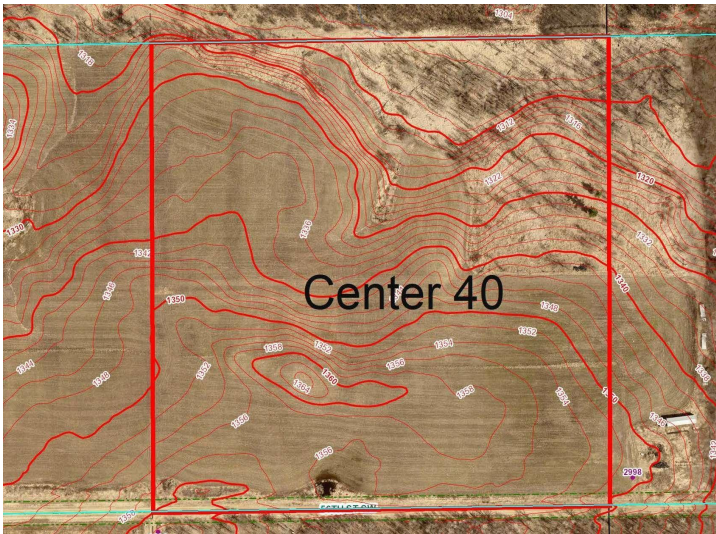
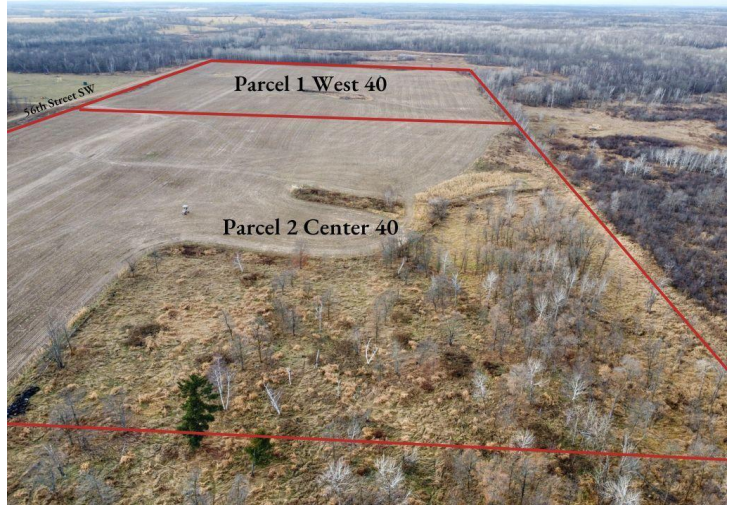
Call Affinity Real Estate

218-237-3333

info@affinityrealestate.com



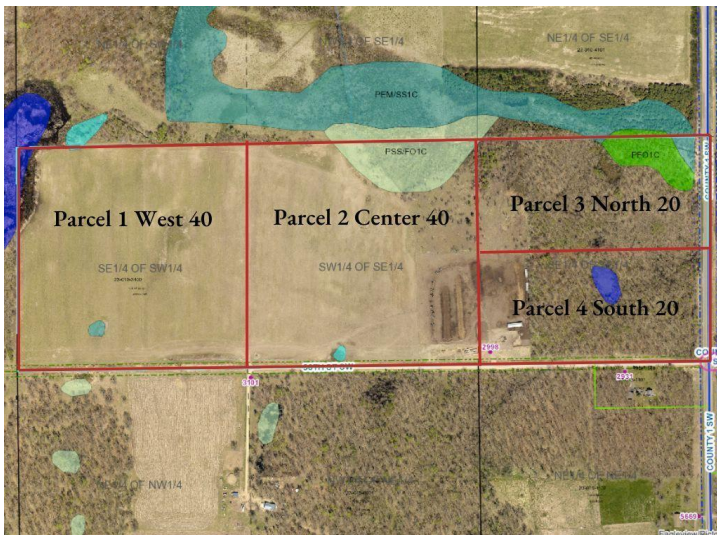
Affinity Real Estate - 600 Park Avenue South - Park Rapids MN 56470



website: www.AffinityRealEstate.com | email: info@affinityrealestate.com | office: 218-237-3333 | fax: 218-237-3377



\$240,000
 MLS 6731047 Land
 Parcel 2 56 Street
 Pequot Lakes MN 56472



website: www.AffinityRealEstate.com | email: info@affinityrealestate.com | office: 218-237-3333 | fax: 218-237-3377



\$240,000
 MLS 6731047 Land
 Parcel 2 56 Street
 Pequot Lakes MN 56472